



## THE SPUR OF

# THE MOMENT

With more than 80 attractions spread across the state, you have the freedom to act on your impulse to unplug and relax on any given weekend.



FARM & RANCH  
ATTRACTIONS

## FARM & RANCH ATTRACTIONS

The rich stories, culture and history of Oklahoma's agricultural roots are on display at our museums and ranches for adventurers of all ages.



GUEST RANCHES

## GUEST RANCHES

Guest ranches are a Western experience getaway – stay all night, hit a hiking trail at dawn and be fishing by noon.



TRAIL RIDING

## TRAIL RIDING

Saddle up and ride at Oklahoma's equestrian destinations. Rent and ride, or bring your horse, where stables are available.

## SWEEP THE

# PLAINS

Discover your Western experience adventure using this handy reference.

- Find attractions near you on the fold-out map in the back.
- Read descriptions of Western experience attractions, listed alphabetically.
- The map and descriptions use a corresponding number system for cross-referencing.
- Plan your trip at OklahomaAgritourism.com. While you're there, sign up for our newsletter and connect with us on Facebook.
- Visit our blog, the Agritourist, to find cool links, articles about local attractions and more Oklahoma Agritourism insider info.



### 1. A to Z Guest Ranch

Located approx. 1 mi. W. off Hwy. 259 between Big Cedar & Octavia. Watch for signs.

Creeks, lush pine forests & abundance of wildlife with more than 150 mi. of trails for hikers, ATVs & horseback riders. Rental horses avail., or bring your own. 27 RV sites with hookups, 2 dump stations. Chef-prepared meals avail. for cabin/camping guests. Cabins avail. w/fireplace & satellite TV. [www.atozguestranch.com](http://www.atozguestranch.com)

64599 Ashby Rd.  
Smithville, OK 74957  
580-244-3729



### 2. Arbuckle Trail Rides LLC

Call for directions. Reservations required.

Arbuckle Trail Rides offers guided trail rides year-round for riders age 6 and up. Ride 1-2 hours up to full-day excursions on well-trained horses with experienced guides. Riding instruction is available, teaching safe, effective confidence-building horsemanship skills. No riding experience necessary! Call or email for reservations. [www.arbuckletrailrides.com](http://www.arbuckletrailrides.com)

Sulphur, OK 73086  
580-622-6326  
580-993-0097



### 3. Arrowhead Stables

Stables located in Arrowhead State Park, 6 mi. S. of Eufaula at the Canadian exit off Hwy. 69. Follow signs to Arrowhead State Park, where you will also see the stable signs.

Arrowhead Stables is located near beautiful Lake Eufaula. Enjoy barrel train rides, apple chunkin', pony rides, guided trail rides, panning for gems & a petting farm; games for kids, a Wild West walk-through, birthday parties & other events can be arranged. Pumpkin patch is open all of October, plus Friday & Saturday from the last weekend in September to the first weekend in November. [www.facebook.com/arrowhead.stables](http://www.facebook.com/arrowhead.stables)

Canadian, OK 74425  
918-465-1500



### 4. Bell Cow Ranch Cabins & Lodge

Take the Chandler exit off the Turner Turnpike (I-44). Go 0.5 mi. N. to 890 Road. Turn L./W. and go 2.5 mi. W. (Keep on 890 when the road curves to the R.) The destination is on the R. at the top of the hill.

Bell Cow Ranch Cabins & Lodge features a 10,500-square-foot lodge that provides a comfortable, beautiful setting for weddings, reunions, parties & anything else you may have in mind. The cabins and lodge are ideally located on a scenic hilltop overlooking Bell Cow Lake, and they feature comfortable accommodations with amenities like grills, patios, full kitchens, washers & dryers, & stocked linens for a fun and worry-free vacation. [www.bellcowranchcabins.com](http://www.bellcowranchcabins.com)

341070 E. 890 Road  
Chandler, OK 74834  
405-258-0034



### 5. Big Kiamichi Ranch

10 mi. E. of Antlers. Call for directions.

Vast wilderness ranch w/ 5 spring-fed lakes along the Kiamichi River; 2-story ranch house accommodates 4. Kitchen equipped w/utensils, dishes, microwave oven, coffee maker, small refrigerator & double stainless steel sink. Lake provides excellent catch & release fishing; wildlife is abundant.

Antlers, OK 74523  
281-703-5849





### 6. Big V Ranch

From I-35, exit U.S. 60 E. toward Ponca City. Exit Hwy. 156/Marland. Go S. 4.5 mi., turn R. on White Eagle Road, go 2 mi. to T St. & turn L.

1,000-acre historic working farm includes cattle & small grain operations. Six-acre facility includes the headquarters, refurbished mule barn, rebuilt commissary gardens, chicken house, tool building, oil pumping units & surrey house. Amazing barn weddings! Private reservations only.

Ponca City, OK 74601  
580-716-1729



### 10. Buffalo Creek Guest Ranch

From Talihina: Go W. 8 mi. on Hwy. 1, then S. 2 mi. on County Road 1080. From McAlester: E. 40 mi. on Hwy. 1 to Buffalo Valley School, E. another 1.5 mi. to County Road 1060, then S. 1 mi. on County Road 1060 to County Road 235. Go E. 1 mi. on County Road 235.

Our ranch, nestled in the mountains of beautiful southeast Oklahoma, offers a unique blend of outdoor adventure & authentic ranch experience, but with a comfortable and cozy bed & breakfast environment. The ranch is an all-inclusive retreat designed to allow you to relax, have fun and let your stress evaporate into the fresh mountain air. It's also a favorite among brides-to-be with a flair for country style.  
[www.buffalocreekguestranch.com](http://www.buffalocreekguestranch.com)

6832 SE 235th Road  
Talihina, OK 74571  
877-527-4207



### 7. Bill & Clara's Home and Ranch

From I-40, take Country Club Exit 123. Go S. 2.3 mi. The blacktop road will curve to the W.; the B&B is on the S. side of the road. Enter through the gated entrance.

Private 1950s 3-bedroom country home surrounded by fields with cattle, horses, barns & silo. Home includes basement with game tables, TV & more; guests also can stay in a secluded mobile home near the S. Canadian River. Activities: trails, fishing, paddleboats, canoes, horseback riding/boarding.  
[www.billandclaras.com](http://www.billandclaras.com)

2701 W. 10th St.  
El Reno, OK 73036  
405-262-6656  
405-650-6651



### 11. Cabin at the Canyon

Take I-40 exit 115 W. of El Reno. Head N. 1/8 mi. to Route 66. Turn L. (W.) on Route 66 and go 3.5 mi. until you see a red farm gate on the S. side of the road. There will be a white mailbox with a key to the gate. Close the gate and follow the road past the cattle pens and barn to arrive at the cabin.

This cabin is newly decorated & complete with a large living room area, small office, kitchen (with supplies) & a Western-style dining room & two lofts, complete with either one queen bed or two twin beds. Friendly cattle and horses roam about the property. This generator-powered cabin, surrounded by 160 wooded acres and a canyon lake, is perfect for those who love the peace and fun of the outdoors.  
[www.billandclaras.com](http://www.billandclaras.com)

El Reno, OK 73036  
405-262-6656  
405-650-6651



### 8. Blubaugh Angus Ranch

From I-35, exit U.S. 60 E., then exit Hwy. 156/Marland. Go 0.5 mi., turn R. on N. Ave., then go 4.5 mi. Ranch will be on the L.

320-acre facility includes a home built in early statehood, vintage barns, grain storage, cattle, horses, oil tanks & pasture. 1,500-acre working farm includes small grain operations & registered Angus cattle. Visit by appointment only.  
[www.blubaughangusranch.com](http://www.blubaughangusranch.com)

9801 W. North Ave.  
Ponca City, OK 74601  
580-761-0923



### 12. Cherokee Strip Museum and Rose Hill School

Take I-35 to exit 186, then go E. on Hwy. 64. The museum & school are right off of I-35 on the N. side of the road.

Museum explores history of the Cherokee Outlet in northern Oklahoma w/emphasis on rural life & communities. Vignettes include a general store, kitchen, & offices of a doctor & dentist; farm implements also are on display. A one-room schoolhouse w/living history programs is on-site. Call for hours.  
[www.cherokee-strip-museum.org](http://www.cherokee-strip-museum.org)

2617 W. Fir Ave.  
Perry, OK 73077  
580-336-2405



### 9. Bridle Creek Horse Ranch & Resort

Located in Sperry at the intersection of N. 52nd W. Ave. & Rock School Road (78th St. N.), a 10-minute drive from either Tulsa or Skiatook Lake.

Bridle Creek sits on 128 acres and offers the community stabling for horses, an indoor arena & paddocks. The east 30 acres offers a large banquet hall and 12 cabins for nightly rental. Schedule your wedding or special event at the beautiful Bridle Creek Horse Ranch.  
[www.bridlecreekok.com](http://www.bridlecreekok.com)

5811 Roper Road  
Sperry, OK 74073  
918-288-2882



### 13. Cherokee Strip Regional Heritage Center

From I-35: Enid exit, Hwy. 412. W. on Hwy. 412 to Enid. The Heritage Center is on the corner of Hwy. 412 (Garriott) & 4th St. just E. of downtown. From Hwy. 81: Hwy. 81 to Enid. Turn E. on Hwy. 412 (Garriott) to 4th St. The Heritage Center sits on the NE corner of E. Garriott & Leona Mitchell.

The Heritage Center includes a special exhibits gallery for traveling & temporary exhibits, plus a reading & research room, gift shop, plaza, the Phillips University columns & "The Homesteaders" monument by H. Holden.  
[www.csrhc.org](http://www.csrhc.org)

507 S. Fourth St.  
Enid, OK 73701  
580-237-1907





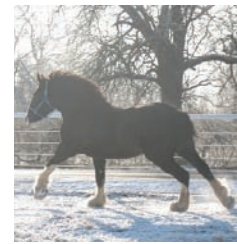
### 14. Chisholm Trail Heritage Center & Garis Gallery of the American West

From Hwy. 81 S., turn R. on Elk Ave. & go 1 mi. W. to Chisholm Trail Parkway, then 0.5 mi. S. From Hwy. 81 N., turn L. on Beech St. & go 1 mi. W. to Chisholm Trail Parkway, then 0.5 mi. N.

Museum explores Old West & cattle drives of the 19th century. IMAX-style theater, campfire theater featuring Western artists, numerous exhibits about the Chisholm Trail, the largest bronze sculpture dedicated to the Chisholm Trail, & the Garis Gallery of the American West. Call for hours.

[www.onthechisholmtrail.com](http://www.onthechisholmtrail.com)

1000 Chisholm Trail Parkway  
Duncan, OK 73533  
580-252-6692



### 18. Express Clydesdales Ranch

From I-40: Take exit 137 (the Cornwell/Czech exit) & go N. to Wilshire Blvd. Turn W. on Wilshire Blvd. & go 0.8 mi. The ranch sits on the N. side of the road. From the Hwy. 3 and Piedmont Road junction: Go S. 3.5 mi. on Piedmont Road. Turn W. on Wilshire Blvd. & go 0.8 mi. The ranch sits on the N. side of the road.

Internationally recognized Clydesdale ranch w/one of the most extensive purebred operations in North America. Tour the Clydesdale horses, barn & gift shop. Open to the public Tuesday-Sunday, 1-6 p.m. Closed on major holidays.

[www.expressclydesdales.com](http://www.expressclydesdales.com)

12701 W. Wilshire Blvd.  
Yukon, OK 73009  
405-350-6404



### 15. Chisholm Trail Museum & Governor Seay Mansion

From Hwy. 81, go 5 blocks W. on Seay Ave., then 1 block N. to Zellers Ave.

Exhibits & displays cover Jesse Chisholm, the Chisholm Trail, Native American & pioneer artifacts, & the history of pioneers settling the area during 1889 & 1892 land runs. Features frontier village w/1890 church, 1889 bank & one-room schoolhouse. Closed on legal holidays. Open 9 a.m.-5 p.m. Tuesday-Saturday, 1-5 p.m. Sunday.

[www.ctokmuseum.org](http://www.ctokmuseum.org)

605 Zellers Ave.  
Kingfisher, OK 73750  
405-375-5176



### 19. Farm & Ranch Museum

In Elk City: Located at the corner of Route 66 & Pioneer Road.

Museum celebrates western Oklahoma's agricultural heritage. Includes varied collection of windmills, exhibits depicting pioneer farmers & ranchers, blacksmith shop, walking cultivators, barbed-wire collection, a 1919 Rumely tractor, a 1936 John Deere tractor. Call for hours.

[www.elkcity.com/museum\\_farm\\_and\\_ranch.aspx](http://www.elkcity.com/museum_farm_and_ranch.aspx)

2717 W. Route 66  
Elk City, OK 73644  
580-225-6266



### 16. Croton Creek Guest Ranch

From I-40, Exit 20, go N. on Hwy. 283, then W. on Hwy. 47 for 4 mi. Go 2 mi. N., then 2 mi. W.

Our 480-acre ranch in western Oklahoma's historic Black Kettle National Grasslands offers authentic Old West spirit, & the 20-room bunkhouse accommodates up to 70 people. Each room is individually furnished & named for an individual or tribe influential in the area. Bring your own horse for excellent trail riding.

Cheyenne, OK 73628  
580-497-3960



### 20. Firey Trails of Tulsa

Only 35 minutes W. of Tulsa in Sand Springs. Visit website for detailed directions.

Beautifully wooded venue including a rustic pavilion, fire pits and spacious grounds for reserved-in-advance group events. Firey Trails can also be a great place for private events and weddings. Find more information on the website. Reservations are required.

[www.fireytrails.com](http://www.fireytrails.com)

20102 W. 61st St. S.  
Sand Springs, OK 74063  
918-227-1025



### 17. Dos Equis (XX) Ranch

From Fittstown: Go S. on Hwy. 99/377 0.5 mi. Turn L. at 99A and go 1.9 mi. Turn R. on N3600 Road & travel 1.25 mi., then turn L. at E. 1672, traveling 0.4 mi. to the property.

Features cabins & 2 designated but unsupervised swimming areas. Explore 970 acres of rolling hills, miles of trails, 2 crystal-clear spring creeks & 18 stocked ponds & lakes. Wildlife abounds - squirrels, rabbits, deer, wild turkey, bobcat, beaver, coyote, ducks & geese.

[www.xxranh.com](http://www.xxranh.com)

27265 CR 3620  
Stonewall, OK 74871  
580-265-4476



### 21. Flying G Ranch

From the intersection of Hwy. 51 & 97 in Sand Springs, go W. on Hwy. 51 for 5.5 mi. Ranch is located on the S. side of the highway.

Working polled Hereford cattle ranch with cattle for sale year-round. Includes a working pecan orchard with seasonal retail shop featuring a range of goodies. Open Nov. 1-Dec. 31, 9 a.m.-6 p.m. daily, or otherwise by appointment.

[www.flying-g-ranch.com](http://www.flying-g-ranch.com)

19402 W. Oklahoma 51  
Sand Springs, OK 74063  
918-245-8854  
918-245-2423





## 22. Flying G Ranch Equestrian Center

From the intersection of Hwy. 51 & 97 in Sand Springs, go W. on Hwy. 51 for 5.5 mi. Ranch is located on the S. side of the highway.

Trail rides on 2,000-acre property w/up to 30 horses available. Offers indoor & outdoor arenas, horse-themed birthday parties, school tours, horse boarding, riding lessons 3 days a week, summer camp in June. Call for appointments & availability.

[www.flying-g-ranch.com](http://www.flying-g-ranch.com)

19402 W. Oklahoma 51  
Sand Springs, OK 74063  
918-245-2423



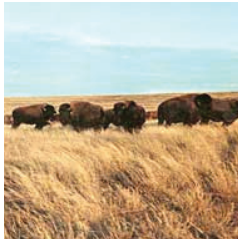
## 26. Fossil Creek Ranch

Take Hwy. 3 E. out of Ada to the Tishomingo/Madill exit, 99 S. Go 4 mi. to CR 1620 and W. 1 mi. The ranch is on the L.

Event & conference center on 100 acres with fishing pond. The ranch is located in prime fossil-hunting territory. Accommodations include 4 bedrooms, full kitchen, swimming pool, 8-person spa, pool table & satellite TV. Must rent entire upstairs for overnight accommodations. Call for availability & reservations.

[www.fossilcreekranchok.com](http://www.fossilcreekranchok.com)

17005 E. CR 1620  
Fitzhugh, OK 74843  
580-777-4414



## 23. Flying W Guest Ranch

Take I-40 to Exit 34. Take Merritt Road to the stop sign at Route 66., then turn L. & go 0.25 mi. to the junction of Hwy. 66 & 6 N. Turn R. & go W. on Hwy. 6 N. Go 5 mi. to Road BK26, then turn R. & go 2.5 mi. N. Ranch will be on R. side of the road. Follow signs.

Horseback riding – bring your own horse or rent one – on working cattle ranch w/2,000 acres, beautiful scenery & abundant wildlife. Visit excavations at largest buffalo kill site in the southern plains. Lodging available in cabins; overnight camping is available. Restaurant is on-site. Call for details.

[www.flyingwguestranch.com](http://www.flyingwguestranch.com)

10874 N. 1920 Road  
Sayre, OK 73662  
580-302-3319



## 27. Gilcrease Museum

From E. I-44, take I-244 E. (Exit 223A) toward downtown. Merge onto Hwy. 64/51/412 W. (5B) to Sand Springs. Go N. on Gilcrease Museum Road.

World's most comprehensive collections of American Indian & Western art, plus 23 acres of themed outdoor gardens. Guided tours daily at 2 p.m. or by special arrangement. Free admission (donations appreciated, special exhibitions may be ticketed). Gift shop & Osage Restaurant on-site. Wheelchairs & strollers available.

[www.gilcrease.org](http://www.gilcrease.org)

1400 Gilcrease  
Museum Road  
Tulsa, OK 74127  
918-596-2700



## 24. Forest Heritage Center Museum

Located in Beavers Bend State Park, 7 mi. N of Broken Bow on Hwy. 259A.

The Forest Heritage Center Museum is designated as the "Wood Art Capital of Oklahoma," and its educational forestry message is conveyed through a series of 14 large acrylic dioramas painted by well-known Smokey Bear artist Harry Rossoll. The museum houses antique forestry tools, wood art, homestead memorabilia, a bronze fallen firefighter sculpture & a 20-foot Indian statue. The People of the Forest Gallery depicts the early years of the forest industry, as well as the story of the traveling timber towns & the accomplishments of the Civilian Conservation Corps in McCurtain County.

[www.forestry.ok.gov/fhc](http://www.forestry.ok.gov/fhc)

Broken Bow, OK 74728  
580-494-6497



## 28. Gloss Mountain Outfitters

From Orienta: At the intersection of Hwy. 412 & Hwy. 60, go 19.7 mi. W. on Hwy. 412 to NS 236 (Clean Harbors sign). Turn S. & go 1.5 mi. to intersection of NS 236/EW 43. Turn W. & go 0.75 mi. at NS 235.3. Turn S. & go 1.4 mi. to ranch's main gate. From Bouse Junction: At the intersection of Hwy. 412 & Hwy. 281, go 5 mi. E. on Hwy. 412 to NS 236. Turn S. & go 1.5 mi. to intersection of NS 236/EW 43. Turn W. & go 3/4 mi. at NS 235. Turn S. & go 1.4 mi. to ranch's main gate.

The gate is locked at all times – once your arrival time is confirmed we will make sure the gate is unlocked for you. Please close the gate after you drive through, but don't lock it. Camping area is located 1.3 mi. S.

Stay at Cedar Haven Lodge, bring your own horse for trail rides or enjoy a peaceful retreat. Horseback riding on ranch horses also available, along w/hayrides, hiking, fishing & campfire cookouts.

[www.glossmountainoutfitters.com](http://www.glossmountainoutfitters.com)

Waynoka, OK 73860  
580-884-1305



## 25. Fortress of Faith Adventures

Take I-44 to Hwy. 70E, then go 17 mi. to Lone Star Road. Turn S. & go 0.5 mi. Or, take I-35 to Hwy. 70W, then go W. on Hwy. 70 to Lone Star Road & turn S. Business sits on W. side of the road.

Fortress of Faith has over 500 acres along the Red River. Activities include guided hunts on prime hunting plots (deer, hogs, turkey, dove, ducks & more), horseback riding, camping, fishing & kayaking. Bed & breakfast-style lodging, plus a cabin available. Church groups, retreats & family reunions welcome!

[www.facebook.com/redriverlodging](http://www.facebook.com/redriverlodging)

198601 N. CR 2700  
Hastings, OK 73548  
940-733-5141



## 29. Harn Homestead

Historical homestead consisting of 10 acres, the 1904 Harn house, the 1897 Stoney Point, a one-room schoolhouse, the 1904 Shinn Barn, a 1900s farmhouse & outhouse, the 1890 Shepherd House, & a stone & cedar barn w/enclosed windmill. Educates children & adults about life in territorial Oklahoma. Call for details.

[www.harnhomestead.com](http://www.harnhomestead.com)

1721 N. Lincoln Blvd.  
OKC, OK 73105  
405-235-4058





### 30. Heartland of America Museum

On I-40, the museum sits between exits 82 & 84 on the S. side of the highway.

This 10-acre, 12,000-sq.-ft. museum offers agricultural exhibits, including a one-room schoolhouse & blacksmith shop. Group tours welcome; group rates offered. Bus parking & guided tours available. Open 9 a.m.-5 p.m. Tuesday-Saturday & 1-5 p.m. Sunday.

[www.oklahomaheartlandmuseum.com](http://www.oklahomaheartlandmuseum.com)

1600 S. Frontage Road  
Weatherford, OK 73096  
580-774-2212



### 34. Horse Heaven Ranch Resort

We are 7 mi. E. on Hwy. 63 (toward Mena, Arkansas). From Talihina: Take Hwy. 271 (in town). Lots of white board fence w/ big rock entrance; turn L. onto ranch. Go 1 mi. to office, located on the R.

Cabins w/amenities, including a private Barnmaster mini-barn for four-legged guests, & fully equipped RV camping sites w/hitching post & paddock. Also available are a modern bathhouse, local farrier services, hookups, firewood, full-size horse arena & horse-boarding services.

[www.horseheavenranchresort.com](http://www.horseheavenranchresort.com)

1 Horse Heaven  
Ranch Road  
Talihina, OK 74571  
918-567-4200  
254-289-2242



### 31. Hinton Historical Museum & Parker House

From I-40, go S. 4 mi. on U.S. 281 to Hinton. At the four-way stop in Hinton, continue S.; the museum sits on the E. side of the road.

A 2-story pink farmhouse located next to 25,000-sq.-ft., 2-story barn housing items depicting local/state history & demonstrating how people lived from the late 1800s forward. Artifacts include buggy & barbed wire collections, antiques & Indian ceremonial items. Open 10 a.m.-4 p.m. Monday-Saturday.

801 S. Broadway Ave.  
Hinton, OK 73047  
405 542-3181



### 35. Howard Ranch Enterprises

At the junction of 9th & Oklahoman (Hwy. 34), go N. 10.2 mi. You will see a brick house with a horse statue out front on the NE corner of the county road junction.

13,000-acre, fifth-generation cattle ranch w/600 head of cattle & 40 head of horses. Guest ranch & working ranch w/horseback riding, hiking, mountain biking. Offers an authentic working ranch experience w/owner Justin Howard, lifelong horse trainer, cowman & professional saddle bronc rider.

[www.howardranchenterprises.com](http://www.howardranchenterprises.com)

206731 E. CR 30  
Woodward, OK 73801  
580-254-5552  
580-334-5552

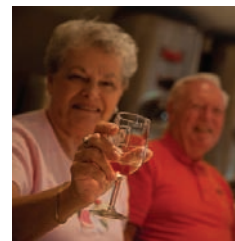


### 32. Hitching Post Bed & Breakfast & Ranch

31 mi. NW of Boise City on Hwy. 325. Go 0.25 mi. N. to ranch headquarters.

B&B housed in a 100-year-old rock house w/a log cabin, cottage & mobile home, all w/kitchen or kitchenette facilities. Guided tours available for groups, w/historical sites & activities including horseback riding, guided trail rides, ranch activities & hunting opportunities.

101 W. Cedar St.  
Kenton, OK 73946  
580-261-7413  
888-279-7397



### 36. Indian Creek Village Winery

From the junction of Hwy. 412 & 58: Go 3 mi. W. on Hwy. 412, then 0.5 mi. N. on N2640 Road.

Our Village Inn is a charming turn-of-the-century-style bed & breakfast, stylishly remodeled into one of the premier romantic getaways in northwest Oklahoma. The lodge makes you feel like you are in another place! Includes a wedding chapel, event center and 18 different wines. It's the perfect place for a wedding, family reunion, birthday, class reunion, or escape from reality for a weekend. Fine dining is available with reservations to make your romantic escape to the country complete. Free concerts are offered every Sunday on the patio or inside, depending on the weather. Escape the busy world and enjoy Indian Creek Village Winery.

[www.indiancreekvillagewinery.net](http://www.indiancreekvillagewinery.net)

42595 S. 264 Road  
Ringwood, OK 73768  
580-554-9463  
580-883-2353

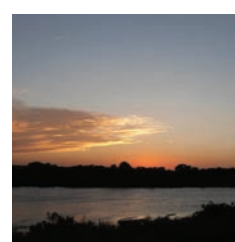


### 33. Hoot Owl Ranch

Located 5.5 mi. E. of Kenton.

The ranch offers hiking, bird-watching & Native American writings on canyon walls, plus plenty of rest & relaxation. Stay in the quiet cabins with queen-size beds & kitchenettes, or for larger parties, choose the more than 100 year-old Rock House with 2 bedrooms, a fold-out couch & a fully accessorized kitchen. This ranch has some of the most beautiful scenery Oklahoma has to offer!

Kenton, OK 73946  
580-261-7789



### 37. Island Guest Ranch

From Ames: Follow FM road W. to Cimarron River bridge. Ranch road is on the S. side of the highway & E. side of the bridge. Follow the signs.

5,000-acre cattle ranch located on an island in the Cimarron River. All-inclusive, family-oriented vacations include lodging, meals & ranch activities. Activities include horseback riding, powwows, fishing, swimming, hiking, roping & Belgian draft horse trolley rides. Upland game & waterfowl hunting packages are available October-March.

[www.islandguestranch.com](http://www.islandguestranch.com)

Ames, OK 73718  
800-928-4574





### 38. J.M. Davis Arms & Historical Museum

World's largest privately owned museum, housing more than 50,000 artifacts, including a believe-it-or-not oddities gallery, a gallery of outlaw & lawman guns, Native American artifacts, Western memorabilia, antique music boxes & musical instruments, an extensive firearms research library & a gift shop.

[www.thegunmuseum.com](http://www.thegunmuseum.com)

330 N. J.M. Davis Blvd.  
Claremore, OK 74017  
918-341-5707



### 42. LNJ Ranch

From the intersection of Hwy. 81 and Hwy. 7, go 0.5 mi. E. Farm is on the L./N.

At the LNJ, we offer our clients over 30 years of experience in the horse industry. We are dedicated to the breeding, raising, training & showing of quality performance horses and ponies. We also offer boarding, training, breeding, English riding lessons & quarter pony inspection services. Trail rides and riding lessons are available for riders of all ages! LNJ Ranch also hosts fun-filled horse camps & clinics throughout the year.

[www.lnjperformancehorses.com](http://www.lnjperformancehorses.com)

119 W. Medcalf Road  
Marlow, OK 73055  
580-591-0500



### 39. Lake Eufaula Stables

Take I-40 exit 259 and turn R./S. onto Hwy. 150 for approx. 5.5 miles. Enter Lake Eufaula State Park & look for the big red barn on the L./E. side of the road.

The stables are located inside Lake Eufaula State Park & offer trail rides through the woods surrounding the lake. Open year-round, weather permitting. Hours are 10 a.m.-5 p.m. Friday-Saturday, 1-5 p.m. Sunday.

[www.facebook.com/lakeeufaulastables](http://www.facebook.com/lakeeufaulastables)

Checotah, OK 74426  
918-360-7775



### 43. Maddux Charolais Ranch

From Mooreland: Go 8 mi. N. on Hwy. 50. Farm is on W. side of road.

Come see the history of farm machinery presented in 1/16 scale replica – over 2,500 pieces representing 100 years of history.

17157 Oklahoma 50  
Mooreland, OK 73852  
580-994-2533



### 40. Linnaeus Teaching Garden

Demonstration/teaching garden in Woodward Park, staffed by well-trained volunteers. During regular hours, garden is free & open to the public; no pets, please. Open 9 a.m.-4 p.m. Tuesday-Friday, 9 a.m.-5 p.m. Saturday, 1-5 p.m. Sunday (summer hours). Call for other seasonal hours.

[tulsagardencenter.com/ltg/](http://tulsagardencenter.com/ltg/)

2435 S. Peoria Ave.  
Tulsa, OK 74114  
918-576-5155



### 44. Meadowlake Ranch

Call for directions.

Scenic ranch just 15 min. W. of Tulsa offering lakeside log cabins, bluff-top cabins & lakeside Indian tipis. 3 plans available: housekeeping, B&B or full-service dude ranch. Amenities/activities include meals, fishing, hiking, canoeing, tomahawk-throwing & archery.

[www.meadowlakeranch.com](http://www.meadowlakeranch.com)

3450 S. 137th W. Ave.  
Sand Springs, OK 74063  
918-494-6000

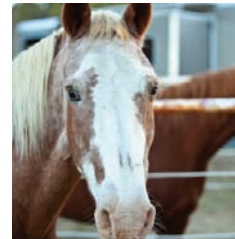


### 41. Little Robe Creek Lodge

Call for driving directions.

Little Robe Creek Lodge & Retreat is surrounded by Little Robe Ranch (an Oklahoma Centennial family ranch), which borders the South Canadian River. Little Robe Ranch is located on the South Canadian River loop of the Great Plains Trail, located off Hwy. 270 – 30-35 minutes from Watonga & Roman Nose State Park, & 20 minutes from Canton Lake.

Oakwood, OK 73658  
580-977-7072  
580-891-3532



### 45. Monkey Island Trail & Hay Rides (Royal Horse Ranch)

From the Will Rogers Turnpike E., take the Vinita exit L./E. on Hwy. 60/69. Go about 10 mi. to Hwy. 85 and turn right at the "Y" junction to Ketchum/Bernice. Follow 85, which turns into Hwy. 85A to Bernice & Monkey Island. Continue to the end of 85A, where you will find 2 convenience stores on the corner. Turn R. on Hwy. 125 S. 1 mile. The ranch is located on the R.

Guided horseback riding & hayrides. Trails wind through more than 100 acres of pastures & shady woods. Riders under the age of 10 must have a parent or guardian. Call for details, information on other available activities, & details on days & hours. By reservation only year-round.

55800 E. 273 Road  
Monkey Island, OK 74331  
918-257-5186









### 46. Moore's Flying M Ranch

Go E. of Tulsa on Hwy. 412, 16 mi. to 4240 Rd., then go N. (L.) 5 mi. to our entryway, marked by the ranch sign.

Ranch on 700 acres offers 2-story log cabin & use of the ranch & picnic grounds for your next event. Our ranch is the perfect setting for church & youth retreats, reunions, weddings, birthday parties or hayrides. Don't miss the Acropalypse Haunted Hayrides and The Widow Maker Mine Walk-Through on the weekends in October. Call for availability.

[www.mooresflyingm.com](http://www.mooresflyingm.com)

20707 E. 540 Road  
Inola, OK 74036  
918-341-7146



### 50. National Cowboy & Western Heritage Museum

Located in Oklahoma City's Adventure District at the junction of I-44 & I-35. From I-44, take exit 128B or exit 129 N. to 63rd St.

Museum embodies the spirit, passion & grit of the American West. Features art, exhibitions, gardens, children's area, temporary exhibits, special events & educational programming. Group discounts available w/advance reservation. Open 10 a.m.-5 p.m. Monday-Saturday, noon-5 p.m. Sunday. Closed Thanksgiving, Christmas & New Year's Day.  
[www.nationalcowboymuseum.org](http://www.nationalcowboymuseum.org)

1700 NE 63rd St.  
OKC, OK 73111  
405-478-2250



### 47. Mowdy Ranch Mustangs

Mowdy Ranch comprises 4,000 acres of wooded hills and open valleys in SE Oklahoma, the historical home of the legendary Choctaw ponies.

[www.mowdyranch.com](http://www.mowdyranch.com)

16242 Oklahoma 31  
Coalgate, OK 74538  
580-927-5093

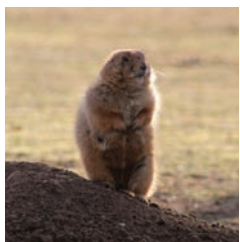


### 51. Old Caldwell Trail Stables & Guest Ranch

Call for driving directions.

Give the family a memory to last a lifetime. Round 'em up & move 'em out to the Old Caldwell Trail Stables in Fay. Go back to a simpler time. Camp out & get ready for horseback riding, w/720 beautiful acres to ride on. Don't know how to ride? We give lessons. Try a Circle N Chuckwagon meal. You can even board your horse at the horse motel, or set up a pen & enjoy the ranch with your horse. It's a working ranch, & you will see the majestic longhorn cattle. We can customize packages & more for large or small groups. We're family-owned-and-operated, & your satisfaction is our No. 1 goal. Put down your cellphones & hand-held computers & get ready for a once-in-a-lifetime experience. We offer happy trails to you.  
[www.oldcaldwelltrail.com](http://www.oldcaldwelltrail.com)

8470 N. 2440 Road  
Fay, OK 73646  
580-309-0135



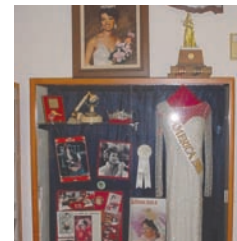
### 48. Museum of the Great Plains

From I-44, take the downtown Lawton exit to Ferris, then go W. on Ferris to 7th.

Special collections & exhibits spotlight the cultural & natural history of the Great Plains of North America, including Native American exhibits of the region, including the Tingley Collection, w/more than 3,200 pieces of 20th-century plains Indian artifacts. Open 10 a.m.-5 p.m. Monday-Saturday, 1-5 p.m. Sunday.

[www.museumgreatplains.org](http://www.museumgreatplains.org)

601 NW Ferris Ave.  
Lawton, OK 73507  
580-581-3460



### 52. Old Town Museum

In Elk City: Located at the corner of Route 66 & Pioneer Road.

Museum complex honors the pioneers of the past. Explore the Rock Bluff School, the pioneer chapel & an early-day pioneer doctor's office. Enjoy a dinner theater production in the opera house then stroll around the Cow Town watering hole. Open 9 a.m.-5 p.m. Monday-Saturday & 2-5 p.m. Sunday.  
[www.elkcity.com/museum\\_old\\_town.aspx](http://www.elkcity.com/museum_old_town.aspx)

2717 W. Route 66  
Elk City, OK 73644  
580-225-6266



### 49. Museum of the Western Prairie

Take Hwy. 283 S. into Altus. Turn E. on Falcon Road and go 0.5 mi. to Memorial Drive. Turn S. on Memorial Drive into the museum parking area.

Designed to resemble the half-dugout homes of early settlers, the museum chronicles history of SW Oklahoma. Learn about geologic uplifts & ancient seas, irrigated farming, Altus Air Force Base, Native Americans, frontier soldiers, cowboys & homesteaders. Open 9 a.m.-5 p.m. Tuesday-Saturday.

[www.okhistory.org/sites/westernprairie](http://www.okhistory.org/sites/westernprairie)

1100 Memorial Drive  
Altus, OK 73521  
580-482-1044



### 53. Pawnee Bill Ranch & Museum

Located 0.5 mi. W. of Pawnee on U.S. 64.

Fully furnished 1910 mansion of Wild West showman Pawnee Bill, promoter of the world-famous "Pawnee Bill's Wild West Show" 1888-1913. Guided/self-tours available. Features buffalo, longhorn cattle, horses, picnic facilities, gift shop & children's play area. See website or call for days/hours/details.

[www.pawneebillranch.com](http://www.pawneebillranch.com)

1141 Pawnee Bill Road  
Pawnee, OK 74058  
918-762-2513





### 54. Pioneer Heritage Townsite Center

Located W. of the courthouse on 9th St.

The history of cotton farming, railroad transportation & aspects of everyday life in 1920s rural Oklahoma presented in outdoor village through exhibits & historic structures. Educational programs available for schoolchildren; call for details. Open 11:30 a.m.-2:30 p.m. Tuesday-Saturday. Call for tours or information.

Frederick, OK 73542  
580-335-5844



### 58. Prairie Song

Located 5.5 mi. E. of Dewey on Durham Road.

Frontier village museum provides a glimpse of life from yesteryear. Offers guided tours for events, private parties & family reunions. Catering & professional entertainment available by special arrangement. Open to the public 10 a.m.-4 p.m. Saturday; open for groups 24/7 by appointment. [www.prairiesong.net](http://www.prairiesong.net)

402621 W. 1600 Road  
Dewey, OK 74029  
918-534-2662

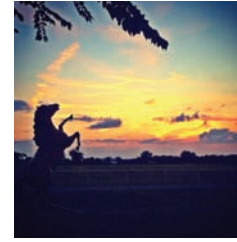


### 55. Pioneer Museums

Take I-40 to Hwy. 283. Follow Hwy. 283 N. to Cheyenne. Museum sits on the S. edge of town in Cheyenne City Park.

Museum w/Kendal log cabin, Roll one-room schoolhouse & more; dedicated to farming/agricultural history w/milking & dairy farm displays, tools, tractors, farm equipment & a 100-year-old grain wagon. Open spring-summer, 10 a.m.-4 p.m. Monday-Saturday; fall-winter, 1-4 p.m. Monday-Friday. [www.rogermills.org/Museums/Museums\\_Pioneer.htm](http://www.rogermills.org/Museums/Museums_Pioneer.htm)

Cheyenne, OK 73628  
580-497-3882



### 59. Pretty Pony Ranch

Take I-40 to exit 321 & go. S. to stop sign. Turn L.; at 4735 Road, turn R. Pretty Pony Ranch is on the L. through the white iron gates.

A working ranch with great opportunities to participate in daily ranch life. From cattle to chickens, donkeys and registered quarter horses, there is always something to do on the ranch daily. Call about horse-riding lessons and other equine services. Also, the ranch has great accommodations right off I-40, exit 321, for both horses and riders.

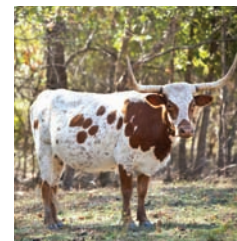
112499 S. 4735 Road  
Muldrow, OK 74948  
479-222-4700



### 56. Plains Indians & Pioneers Museum

Take a walk on the wild side in lawyer/gunfighter Temple Houston's hometown museum, which features frontier-town vignettes, a bank, a saloon, a jail, a photo studio & newspaper office, Native American exhibits about the Cheyenne & Arapaho, murals, a gift shop, & an art gallery. Open 10 a.m.-5 p.m. Tuesday-Saturday. [www.nwok-pipm.org](http://www.nwok-pipm.org)

2009 Williams Ave.  
Woodward, OK 73801  
580-256-6136



### 60. Rebel Hill Guest Ranch

In Antlers: Follow Hwy. 3 to just before Sportsmans Inn. There will be a "Y" that will curve off to the left; continue going straight! Go about 4 mi. out of town. Turn L. at Crossroads Grocery (you'll see our sign). Go around the curve & you'll see our entrance to the L. Come up to the main house.

Working horse ranch featuring fully equipped 1-3 bedroom cabins w/full kitchens, central heat/air; some have wood stoves, & all are on the waterfront. Other activities include horseback riding, fishing & paddleboats, enjoying the 15-acre lake, birdwatching, & hiking. Offers gift shop, meeting room & outdoor swimming pool. Pets allowed. [www.rebelhillguelstranch.com](http://www.rebelhillguelstranch.com)

Antlers, OK 74523  
580-271-0061



### 57. Prairie Land Ranch

Go 2 mi. S. of I-40 (El Reno exit 123) & follow blacktop road to sign & gate.

Visit horses, donkeys, llamas, peacocks, geese, ducks, turkeys & guineas on a quiet ranch. Features a fully furnished Victorian-style home for couples or family reunions, along w/an enclosed flower garden, a small lake with walking trails, & horses available for weddings. [www.prairielandranch.com](http://www.prairielandranch.com)

5620 S. Country Club Road  
El Reno, OK 73036  
405-650-6651



### 61. Robbers Cave Stables

From Wilburton: Go 5 mi. N. on Hwy. 2 to Robbers Cave State Park entrance. Continue 0.5 mi. W. on Ash Creek Road.

When it's time to go on vacation, making it an adventure is a much more memorable experience. When you've been stuck in the city for too long, going outdoors is the best way to spend time with your family. At Robbers Cave Stables, your family will cherish the time spent together. We are a family-owned-and-operated dude ranch that proudly offers services for new and experienced riders in Oklahoma & the surrounding areas. More than just a riding stable, we are passionate about creating memories for families on vacation & locals alike. We give people an authentic cowboy experience, from sleeping under the stars to riding through our dauntless trails. Saddle up with us today; we look forward to meeting you! [robberscavestables.com](http://robberscavestables.com)

2297 NW 158th Road  
Wilburton, OK 74578  
918-465-1500





### 62. Rockytop Ranch & Resort

Call for driving directions.

Fishing, hunting, hiking, birdwatching & horseback riding in a historic setting with 100-year-old wagon trails, 1800s homesteads, petrified logs & other natural wonders. Organized trail rides & lodging available. Hog, deer, turkey, squirrel, rabbit & dove hunting offered. Reservations required.

[www.huntrackytop.com](http://www.huntrackytop.com)

8657D 1277 Road  
Lamar, OK 74850  
918-656-3564

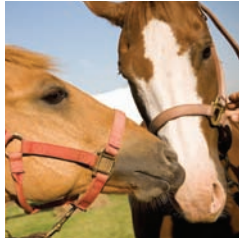


### 66. Shepherd's Cross Inc.

From Claremore, take Hwy. 66 N. 2.5 mi. from the last stoplight in town; note the sign for Shepherd's Cross. Turn R. on EW 45/Akin Road & follow the trailblazer signs for Shepherd's Cross; proceed 2.5 mi. Shepherd's Cross is on the R.

Authentic working farm with educational & seasonal tours & events all year, including fiber arts demos/lessons, spinning, weaving & knitting. Events include Wooly Weekend, Gospel Singin' & Pickin', Fiber Fest, pumpkin festival, living nativity & pecan festival. Features a made in Oklahoma gift shop. Open 8:30 a.m.-5:30 p.m. Thursday-Saturday w/seasonal changes; check website or call first. [www.shepherdscross.com](http://www.shepherdscross.com)

16792 E. 450 Road  
Claremore, OK 74017  
918-342-5911



### 63. Rusty Gables Guest Lodge and Gallery

From I-35, take exit 132A (NE 50th St.). Go E. on NE 50th St. 0.7 mi. to the property. The driveway is on the S. side of the road.

Log lodge located just minutes from Oklahoma City on 30-acre N Triangle P Ranch; features 700 sq. ft. of luxury suites, a Western art gallery, horseback trail rides & a 1,200-sq.-ft. event barn. Also offers free breakfast, a gift shop, horse rental, an in-room fireplace, a meeting room, satellite/cable TV & whirlpool tubs.

[www.rustygables.com](http://www.rustygables.com)

3800 NE 50th St.  
OKC, OK 73121  
405-424-1015



### 67. Shooting Star History

Travel I-40 W. to exit 108. Go N. to Hitchcock. Travel 1 mi. E. of Hitchcock on Hwy. 8; farm is on the N. side of the road.

History isn't just the past – it's alive and well in the present at Shooting Star. While many museums just let you see the past, with our historical skills, you are encouraged to experience it firsthand. We are not just costumed re-enactors. Come enjoy living history! [www.shootingstarhistory.net](http://www.shootingstarhistory.net)

Hitchcock, OK 73744  
580-825-3374  
580-623-0126



### 64. Sequoyah Riding Stables

Located inside Sequoyah State Park on Hwy. 51, 9 mi. E. of Wagoner & 15 mi. W. of Tahlequah.

Guided horseback riding through open/wooded areas. Trail rides last about an hour; riders must be at least 6 years old to ride alone. Horse-drawn carriage rides, trail rides, hayrides, pony rides & cookouts available. Open Memorial Day to Labor Day, 8:30 a.m.-5:30 p.m. Tuesday-Sunday. Call for off-season times.

[www.sequoyahridingstables.com](http://www.sequoyahridingstables.com)

Hulbert, OK 74441  
918-772-3906



### 68. Silver Wind Stables at Windy Meadow Farm

From OKC: Take Hwy. 74 N. to Sorghum Mill Road. Go E. to May Ave, then N. to farm entrance w/black fence and Windy Meadow Farm sign.

Just 30 minutes from downtown Oklahoma City, this 750-acre ranch has rolling hills, open meadows and plenty of wildlife to watch as you take a horseback ride to unwind and enjoy the outdoors. Open every day. Rides by appointment only. [www.silverwindstables.com](http://www.silverwindstables.com)

24413 N. May Ave.  
Edmond, OK 73025  
405-834-0411



### 65. Shattuck Windmill Museum and Park

Located at the junction of Hwy. 283 and Hwy. 15.

3-acre display of 53 rare & restored windmills from 1870 to 1970; no two are alike. A furnished half-dugout of local caliche rock has been reconstructed, as has a 1900 story-and-a-half homestead house. Tours available. Open daily from sunrise to sunset.

[www.shattuckwindmillmuseum.org](http://www.shattuckwindmillmuseum.org)

Shattuck, OK 73858  
580-938-5146



### 69. Simpson's Old Time Museum & Skeleton Creek Productions

In Enid: Located 2 blocks E. of the downtown square on Randolph. From Hwy. 8: Go E. on Randolph 12 blocks. From Hwy 412: Travel N. on Grand to Randolph, then go E. 2 blocks.

Movie sets used in action-packed family Westerns include an 1880s saloon, jail, hotel lobby (complete with hallway & room), old-time general store & 1880s chapel. Museum features Hopalong Cassidy collectibles, an authentic chuckwagon scene surrounded by high-back saddles dating to 1890, & a huge doll collection. Come enjoy this eclectic treasure! [www.skeletoncreekproductions.com](http://www.skeletoncreekproductions.com)

228 E. Randolph Ave.  
Enid, OK 73701  
580-234-4998





### 70. Sipokni West

Go 10 mi. N. of Tishomingo to the town of Reagan on Hwy. 7; follow the signs S. of Reagan.

Old West movie set with museums, a trading post & a full-menu restaurant. Open 11 a.m.-8 p.m. Thursday, 11 a.m.-9 p.m. Friday-Saturday, noon-3 p.m. Sunday.  
[sipokniwest.com](http://sipokniwest.com)

Reagan, OK 74856  
580-384-8344



### 74. Stockyards City

Located S. of I-40 near SW 15th St. between Exchange & Agnew aves.

Stockyards City is the largest stocker/feeder cattle market in the world. See Oklahoma cowboys working the livestock & browse a variety of shops, from old-time general stores to tack shops, western duds, jewelry & restaurants. Visitors can also attend livestock auctions at 8 a.m. Monday-Tuesday.  
[www.stockyardscity.org](http://www.stockyardscity.org)

1307 S. Agnew Ave.  
OKC, OK 73108  
405-235-7267



### 71. SpiritHorse Chisholm Trail Riding Center

Located 3.3 miles E. of Comanche on Hwy. 53 E. Take the L. fork in the highway & go 0.5 mi. E. to CR NS 286. On CR NS 286, go N. (L.) 0.8 mi. to the ranch entrance on the W. side of the road or 7.8 mi. SE of Duncan.

Authentic cowboy & Western experience with live cattle drive. Join in the daily ranch work & campfire chuckwagon dinners, & listen to cowboy singing & storytelling about cattle drives. Open 9:30 a.m.-6:30 p.m. Monday-Friday, 10 a.m.-6 p.m. Saturday.

181577 N. 2860 Road  
Comanche, OK 73529  
580-606-0859



### 75. Straw Family Farm

From Coffeyville, Kansas: Take Hwy. 169 S. to Lenapah, Oklahoma. Turn R./W. on the gravel road marked EW 13. Drive W. for 0.5 mi. to the stop sign. Farm is on the L. at the SE corner of the intersection. From Tulsa: Take Hwy. 169 N. to Lenapah. Turn L./W. on the gravel road marked EW 13. Drive W. for 0.5 mi. to the stop sign. Farm is on the L. at the SE corner of the intersection.

The Straw Family Farm is a small working farm that makes use of livestock for many purposes. We have poultry for fresh eggs, goats for milk, as well as sheep & goats for their fleece & meat. Monday is milking day. Tuesday is Helping Hands day, where we focus on animal care. Fridays are all about fiber with free processing & spinning demonstrations. There are animals to pet at the farm daily. Winter hours are 9 a.m.-5 p.m. Friday/Saturday/Monday, 1-5 p.m. Sunday; open Tuesday-Thursday by appointment only.  
[www.farmontheprairie.com](http://www.farmontheprairie.com)

HC 61, Box 16  
Lenapah, OK 74042  
918-640-4012



### 72. Spring Valley Ranch

From Tulsa: Take I-44 E. to the Adair exit (Hwy. 28). Travel E. to Langley. The stoplight in Langley is the junction of Hwy. 82 & 28; turn R./S. on 82 & travel 8 mi. to the junction of Hwy. 82 & 20. Travel E. on Hwy. 20 toward Jay approx. 6 mi. to County Road 524, then turn R./S. Travel 3.5 mi. & cross the low-water bridge. Continue 0.5 mi. on gravel road to the ranch.

Retreat & conference center designed for individuals or larger groups, with lodging, fishing, guided hunts, a zip line, a challenge wall, an Indiana Jones course, sporting clays, mountain biking, kayaking & ATV tours (rentals available). Features hiking & biking trails, plus more than 20 mi. of marked trails.  
[www.springvalleyranchok.com](http://www.springvalleyranchok.com)

42301 CR 510  
Eucha, OK 74342  
918-253-2726

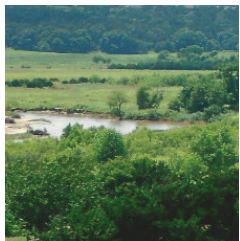


### 76. Taloka Valley Cultural Heritage Center

On Hwy. 9, go 2 mi. E. of Stigler. Look for an intersection with a general store & church on the R./S. Turn L. on Tamaha. Go 0.5 mi. N. & turn L./W. onto a dirt road (CR 1205). The center is 0.5 mi. down CR 1205. Look for the sign on the R.

Our heritage center is intended to appeal to those who want to learn more of the history & culture of the region. We have rustic replicas of a board-and-batten barn houses, a working saw mill and many small tools. In the surrounding field, you will find much more. All artifacts were gathered from within 100 miles of Stigler.  
[www.talokavalleychc.com](http://www.talokavalleychc.com)

20250 E. CR 1205  
Stigler, OK 74462  
918-967-4078  
918-471-3333



### 73. Stilt Tree House

Take I-40 exit 115 W. of El Reno. Head N. 1/8 mi. to Route 66. Turn L. (W.) & go 5 mi. to Mayberry Road. Turn L. & head S. for 4 mi. You will arrive at a gate, then follow the road to the Stilt Tree House.

In a wooded area that borders the S. Canadian River, the Stilt Tree House is the perfect place for your next outdoor adventure. This tree house in the woods is complete with a queen-sized bed, a wrap-around deck, & solar-powered lights & TV. The property consists of 78 acres with marked hiking trails & a life-sized replica of a Western town. Come enjoy the birds, wildlife & the outdoors at the Stilt Tree House!  
[billandclaras.com](http://billandclaras.com)

7570 S. Mayberry Road  
El Reno, OK 73036  
405-262-6656  
405-650-6651



### 77. Tatanka Ranch

Take the Chandler exit from Turner Turnpike. Go N. on Hwy. 18 8-9 mi., E. on Parkland Road 4 mi., S. at the Tatanka Ranch sign on the SW corner of Parkland & N. 48, then 1.5 mi. S.

Nestled on 1,000 acres of countryside, the ranch features a new event barn, 10 cabins, a 2-bedroom guest house, lodge, rec room, playground, 8 stocked ponds, a 15-acre lake, horse rental, on-site lounge/bar & restaurant, outdoor swimming pool, satellite/cable TV, bicycle/canoe rental, & gift shop. Group rates available. Call for details.  
[www.thetatankaranch.com](http://www.thetatankaranch.com)

820343 S. 3480 Road  
Stroud, OK 74079  
866-427-1931  
918-368-2251





### 78. The Back 40 Retreat

Call for directions

The Back 40 Retreat allows you to come & enjoy the peace & quiet in this beautiful country setting. We offer a 1,200-sq.-ft. 2-bedroom, 2-bath cottage located on 180 acres of a working cattle ranch near Maud. Amenities include a kitchen, cable TV & whirlpool tubs.

[www.youroklahomagetaway.com](http://www.youroklahomagetaway.com)

45416 Cemetery Road  
Maud, OK 74854  
405-333-2741



### 82. Tom Mix Museum

From Tulsa: Go N. approx. 55 mi. on Hwy. 75 to the intersection of Hwy. 75 & Don Tyler Ave. Go W. on Don Tyler 2 blocks. Museum is located at the intersection of Don Tyler & Delaware.

The Tom Mix Museum is home to all manner of memorabilia of the life of Tom Mix, one of Oklahoma's most colorful figures. Guns, clothes/costumes & a life-size replica of his horse, Tony, reflect the cowboy movie star & entertainer. Open February-December, 10 a.m.-4:30 p.m. Tuesday-Saturday. [www.tommixmuseum.com](http://www.tommixmuseum.com)

721 N. Delaware St.  
Dewey, OK 74029  
918-534-1555



### 79. The Lodge at Rock Creek Ranch

Call for information.

Hosting groups & international visitors, this multifaceted operation has guest & entertainment facilities at The Lodge at Rock Creek Ranch. The Lodge has overnight accommodations as well as event space for weddings, meetings & other gatherings.

[www.rcranchevents.com](http://www.rcranchevents.com)

S. 4400 Road  
Big Cabin, OK 74332  
918-625-7578

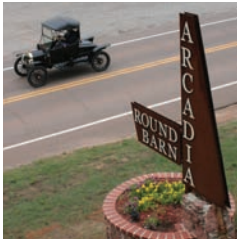


### 83. Turtle Rock Farm Retreat

From I-35, take exit 203 (the Billings exit) and go 1.5 mi. E.; turn S. & go to 6201 CR90 (which is designated on the mailbox).

Accommodations include a 100-year-old farmhouse & a straw-bale hermitage. We specialize in retreats that connect people with the natural world, their inner lives & each other. Located just 1.5 hours from Oklahoma City, Tulsa & Wichita! [www.turtlerockfarmretreat.com](http://www.turtlerockfarmretreat.com)

5900 CR 90  
Red Rock, OK 74651  
580-917-6011  
580-370-0764



### 80. The Round Barn

From I-35, go E. on Hwy. 66 for 6 mi.

Restored 1898 landmark on Route 66 is the only wooden round barn in Oklahoma. Features gift shop & exhibits, including outdoor displays of primitive farm implements. Houses the Arcadia Historical & Preservation Society. Free admission; meeting room and tour bus parking available. Open 10 a.m.-5 p.m. daily.

[www.arcadiaroundbarn.org](http://www.arcadiaroundbarn.org)

107 E. Oklahoma 66  
Arcadia, OK 73007  
405-396-0824

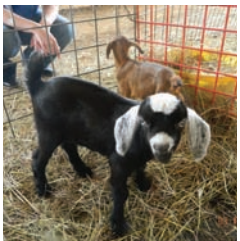


### 84. Washita County Museum

In Cordell: Go 1 block N. & 1.5 blocks W. of the Hwy. 183 & Hwy. 152 junction to 115 E. 5th St.

Museum features more than 10,000 items, each with its own story to tell. Cared for by local historian/author w/stories of agricultural progression. Open 1 p.m.-4 p.m. Monday-Friday & anytime by request or appointment.

115 E. First St.  
Cordell, OK 73632  
580-832-5270



### 81. Three Creeks Ranch

In Meeker: From the 4-way stop, go E. 7 mi. on Hwy. 62 to 3500 Rd. Turn R./S. for 0.7 mi., then turn R./W. for 0.3 mi. Farm will be on the R. Look for the barns with red roofs. From Prague: Take Hwy. 62 W. 5 mi. to 3500 Road. Turn L./S. for 0.7 mi., then turn R./W. for 0.3 mi. Farm is on the R.

3-Creeks Ranch is a great place for relaxing & petting the farm animals, including dairy goats, Dexter cattle, chickens, turkeys & ducks. The farm also offers birthday parties and classes such as gardening, pottery, etc. The farm sells fresh eggs, honey, chicken, turkey & pork. Call ahead to visit.

349776 E1050 Road  
Prague, OK 74864  
405-567-8603



### 85. Wildlife Heritage Center Museum

Located approx. 0.5 mi. S. of the intersection of Hwy. 3 & 271S.

3,100-sq.-ft. log cabin facility serves as a wildlife & nature resources conservation, public & education learning center. Open 9 a.m.-4 p.m. Monday-Friday, 10 a.m.-2 p.m. Saturday; closed on holidays. Admission is free. [www.wildlifeheritagecenter.org](http://www.wildlifeheritagecenter.org)

610 SW D St.  
Antlers, OK 74523  
580-298-9933



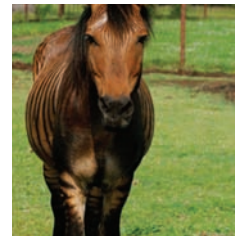


### 86. Will Rogers' Birthplace (Dog Iron Ranch)

Go 2 mi. N. of Oologah on Hwy. 169, then 2 mi. on CR EW 38, 10 mi. NW of Claremore.

Site of the log-walled 2-story home where famed Cherokee humorist & film star Will Rogers was born in 1879. Pet farm animals & view vintage Rogers movies & newsreels in an air-conditioned barn on the 400-acre grounds. Admission is free; guided tours are available. Open 8 a.m.-5 p.m. daily. [www.willrogers.com](http://www.willrogers.com)

9501 E. 380 Road  
Oologah, OK 74053  
918-341-0719



### 89. Woolaroc Ranch & Museum & Wildlife Preserve

Located 12 mi. SW of Bartlesville on Hwy. 123.

Woolaroc is nestled on 3,700 acres in the Osage Hills and is home to a world-class art museum, the historic lodge home & free-grazing buffalo, deer, longhorns & more. The country home of oilman Frank Phillips is a monument to the history of the West & is listed on the Register of Historic Places in Washington, D.C. [www.woolaroc.org](http://www.woolaroc.org)

1925 Woolaroc Ranch Road  
Bartlesville, OK 74003  
918-336-0307



### 87. Windsong Adventures Outdoor Entertainment

From Adair (junction of U.S. 28 & 69): Go 1 mi. N. on U.S. 69. Turn R. on to 390 Road & go 1.25 mi. E. (0.75 mi. past N435 Road). Entrance is on the L. side of the road.

The lodge is great for a family getaway or a small group retreat. Enjoy the fully equipped kitchen or grill on the deck. Take the family fishing in our private ponds.

[www.facebook.com/Windsong-Adventures-Outdoor-Entertainment-265942149725/](https://www.facebook.com/Windsong-Adventures-Outdoor-Entertainment-265942149725/)

757 E. 390 Road  
Adair, OK 74330  
918-864-0055



### 90. Zena Suri Alpacas

From Rt. 59 Between Grove & Jay, Follow Route 127 W. almost 5 mi. Turn N. on 580 Road. Ranch is the 3rd property on the L. Enter at Zena Suri sign.

Nestled on 78 rolling acres, this alpaca ranch features the soft, gentle Suri alpaca. Watch alpacas roam, touch their fleece, & help feed & care for them. Learn about fleece prep, carding & spinning. Family visits, tours & school field trips welcome. Gift shop offers yarn & clothing. Call for an appointment.

[www.zenasuralpacas.com](http://www.zenasuralpacas.com)

35401 S. 580 Road  
Jay, OK 74346  
804-389-2579



### 88. Wood Guest Ranch

Call for driving directions.

Wood Guest Ranch in Boswell is open year-round to trail riders. The trails cover several thousand acres of open plains, hills & the Boggy River wilderness. Cabin rental, campsite facilities & full RV hookups are available. Bring your own horse or rent one of ours for a guided tour.

Boswell, OK 74727  
580-566-1300



