



TEACHABLE MOMENTS

Helping kids discover Oklahoma is easier than ever – visit OklahomaAgritourism.com, select “activities” and click on the “Teachable Moments” icon for Agritourism field trip ideas and more.

THE SPUR OF

THE MOMENT

With more than 160 attractions spread across the state, you can act on your impulse to celebrate the season and get in touch with nature – literally!



U-PICK

U-PICK

Locally grown, fresh-picked harvestables offer guests one of life's sweet indulgences. From touring strawberry patches to picking deliciously fresh blackberries, there's plenty of farm-fresh fun for everyone.



MAZES

MAZES

Wind your way through the many twists, turns and decision points en route to the finish line of Oklahoma farms' famous corn and hay mazes. Challenge a fellow guest to an a-MAZE-ing race!



PETTING FARMS

PETTING FARMS

There is nothing like discovering the wonder of animals. At an Oklahoma petting farm, you can be sure to find fun facts about barnyard animals, as well as a wealth of photo opportunities and the chance to create memories that will last a lifetime!



PUMPKIN PICKING

PUMPKIN PICKING

Oklahoma is home to many farms, all of which grow beautiful, delicious produce. Join in on the fall festivities by finding and picking your own pumpkin for Halloween right from an Oklahoma farm.



SPECIALTY CROPS & PRODUCTS

SPECIALTY CROPS

Discover opportunities to pick and cut crops you just can't find in a grocery store. From pecan-picking to cutting down your own Christmas tree, there is always something different for agri-adventurers to explore.



FARMERS MARKETS

FARMERS MARKETS

If you are looking to explore the products grown right from Oklahoma's soil, look no further. Local farmers markets offer delicious, well-nurtured produce, farm-fresh eggs, and even products unique to the beautiful Oklahoma landscape. One thing just about all locavores agree on is that fresh produce packs a wallop for optimizing taste and nutrition.

SWEEP THE

PLAINS

Discover your land bounty adventure using this handy reference.

- Find attractions near you on the fold-out map in the back.
- Read descriptions of land bounty attractions, listed alphabetically.
- The map and descriptions use a corresponding number system for cross-referencing.
- Plan your trip at OklahomaAgritourism.com. While you're there, sign up for our newsletter and connect with us on Facebook.
- Visit our blog, the Agritourist, to find cool links, articles about local attractions and more Oklahoma Agritourism insider info.



1. 360 Farms

From I-40: Take Exit 284 (Ross Road) S. for 2.3 mi. Turn off blacktop @ sharp R.t curve. Turn E. (L.) on gravel road CR 213 for 0.7 mi. Turn S. (R.) on CR 115 for 0.6 miles. The farm is on the L. If possible, use Google Maps for best results.

360 Farms is a family-owned-and-operated enterprise. We're proud to say that four generations of our family have worked this land. The name, 360 Farms, denotes our life coming full circle after many years and many detours. We're part of that growing community that understands well-grown food tastes better and good nutrition offers great health benefits. We work hard to provide the very best in agricultural products from our farm. 360 Farms offers only the best in elderberry plants, along with products from both the berries and flowers of our 8,000-plant elderberry orchard.
www.360okfarms.com

21838 S. 115th St. E.
Porum, OK 74455
918-464-2505



2. Ada Farmers Market

In Ada: Located at the intersection of 12th & Townsend.

Ada Farmers Market offers a wide array of fresh fruits & vegetables along with plant materials. Whether you are looking for delicious produce, salad greens, herbs, honey, watermelons, peaches, farm-fresh eggs, meat items, cut flowers or quality Made in Oklahoma products, you must explore this seasonal, open-air market! Open April-November, Wednesday & Saturday, 6 a.m.-2 p.m.

231 S. Townsend Ave.
Ada, OK 74820
580-436-1600
580-436-8132



3. Agape House Berry Farm

Call for driving directions.

Visit the Agape House Berry Farm for a fun, family-friendly blackberry and strawberry-picking experience!
www.facebook.com/agapehouseberryfarm/

10912 S. Czech Hall Road
Mustang, OK 73064
405-628-8092



4. All Pine Products

From OKC: Take I-40 W. to Exit 138 (Hwy. 4) Mustang Road. Go S. 2 mi. Located on the W. side of the road between SW 15th & SW 29th.

Choose & cut Christmas trees, Virginia pines & wreaths. Free tree-stand drilling, shaking, wrapping, loading & tying to your vehicle, plus coloring books & candy canes for the kids. Open during the Christmas season; 3 p.m.-6 p.m. Monday-Friday, 10 a.m.-6 p.m. Saturday-Sunday.

2205 S. Mustang Road
Yukon, OK 73099
405-820-5666
405-324-1010





5. Altus Farmers Market

In Altus: NE side of the Altus Plaza Shopping Center, 1100 N. Main St.

Altus Farmers Market offers a wide array of fresh fruits & vegetables, along with plant materials. Whether you are looking for delicious produce, salad greens, herbs, honey, watermelons, peaches, farm-fresh eggs, meat items, cut flowers or quality Made in Oklahoma products, you must explore this seasonal, open-air market! Open May-October, 4-8:30 p.m. Tuesday & Friday.

Altus, OK 73521
580-482-0823
580-471-2709

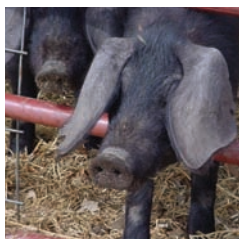


9. Arrowhead Stables

Stables located in Arrowhead State Park, 6 mi. S. of Eufaula at the Canadian exit off Hwy. 69. Follow signs to Arrowhead State Park, where you will also see the stable signs.

Arrowhead Stables is located near beautiful Lake Eufaula. Enjoy barrel train rides, apple chunkin', pony rides, guided trail rides, panning for gems & a petting farm; games for kids, a Wild West walk-through, birthday parties & other events can be arranged. Pumpkin patch is open all of October, plus Friday & Saturday from the last weekend in September to the first weekend in November. www.facebook.com/arrowhead.stables

Canadian, OK 74425
918-465-1500



6. Anichini-Moore Ranch & Farm

From the W, take Hwy. 15 into Woodward to 34th St. Turn S. on 34th St. & go S. 6 mi. to EW46. On EW46, turn W. & go 1 mi. to NS200. On NS200, turn S. & go 0.5 mi. Farm is on the E. side of the road.

Sustainable farm offers group tours, wildlife- & bird-watching, stargazing. View endangered/unusual livestock, learn how to grow herbs & produce, gain knowledge about natural farming practices in Oklahoma. Ecologically grown produce, heritage fruits, vegetables, & grass-fed beef, pork & lamb. By appointment only.

www.anichinimoore.com

Woodward, OK 73801
405-823-8295



10. Baker's Acres – Baker Pecans

1.5 mi. S. on S. Muldrow Road off of E. Main St. in Tishomingo.

Home of Baker's Acres pumpkin patch & corn maze. Pecan cracking & shelling plant w/retail store. Sells a variety of candies, jam & gift baskets. Also an on-farm market selling a variety of fruits & vegetables. Call for days/hours of operations or to make reservations for groups.

www.bakerpecans.com

11250 S. Muldrow Road
Tishomingo, OK 73460
580-371-5228
580-371-5916



7. Annabelle's Fun Farm

From Welch: Take Hwy. 10 1 mi. E. Turn S. at Bluejacket Road/4450 Road. Go 1 mi. and turn W. on Road 110 for 0.5 mi. The farm is on the N. side of the road. You can't miss the red barn.

Annabelle's is a family-owned fun farm. We offer 27 activities, including a pumpkin patch, petting farm, corn mazes, tractor-pulled hay rides, gemstone mining and many more! Parties or field trips can be scheduled by appointment. Fall hours: 10 a.m.-6:30 p.m. Friday-Sunday. Open Sept. 23 to Oct. 29, 2017.

www.annabellesfunfarm.com

44460 E. 110 Road
Welch, OK 74369
918-323-6352



11. Bamboo Satori

Call for driving directions.

Come walk through gardens that contain over 35 varieties of bamboo. Tours are available by appointment only, and live bamboo plants and cane poles are available for sale.

www.bamboosatori.com

21755 N. May Ave.
Edmond, OK 73012
405-834-9707



8. Ardmore Market Place on Broadway

Located at 106 E. Broadway St. in Ardmore.

The Market Place on Broadway farmers market in Ardmore offers a wide array of fresh fruits & vegetables, along with plant materials. Whether you are looking for delicious produce, salad greens, herbs, honey, watermelons, peaches, farm-fresh eggs, meat items, cut flowers or quality Made in Oklahoma products, you must explore this seasonal, open-air market! Open April-December, 7:30 a.m.-noon Wednesday & Saturday. chamber.ardmore.org/farmersmarket.php

106 E. Broadway St.
Ardmore, OK 73401
580-226-6246



12. Bartlesville Farmers Market

Frank Phillips Park, located at the corner of Keeler & Frank Phillips Blvd. in downtown Bartlesville.

Bartlesville Farmers Market offers a wide array of fresh fruits & vegetables, along with plant materials. Whether you are looking for delicious produce, salad greens, herbs, honey, watermelons, peaches, farm-fresh eggs, meat items, cut flowers or quality Made in Oklahoma products, you must explore this seasonal, open-air market! Open May-October, 8-11:30 a.m. Saturday.

www.bartlesvillefarmersmarket.com

Bartlesville, OK 74005
918-914-3791





13. Base Vines & Cattle LLC

From Geary: Go 1 mi. N. to American Horse Lake Road; turn W. & go 3.5 mi.; turn S. & go 0.75 mi.

Base Vines and Cattle is a small, family-owned farm diversifying & trying to make the world a little better than the one we were born into. We strive to keep our grapes & animals chemical-free – not just for their benefit, but also for yours. We are trying to reach into the grass-finished market with beef, pork & poultry. Currently, we grow Syrah grapes for our winery. Check with us often to hear about our wine selection!

www.basevinesandcattle.com

115 W. Main St.
Geary, OK 73040
405-884-1066



17. Blue River Valley Winery

From Durant: Take U.S. 69 N./U.S. 75 N. to Armstrong exit, then go E. to Sawmill Road. Turn R. on Sawmill Rd. 2 mi. S.

Blue River Valley Winery is a small boutique winery with handcrafted wines in Caddo that overlooks the Blue River near Durant.

www.bluerivervalleywinery.com/home.html

3475 Sawmill Road
Caddo, OK 74729
580-775-4213



14. Benson Park Pecans

Call for driving directions.

Historic grounds of Benson Park Pecans, equipped w/ updated pecan equipment. Orchard & plant tours for school groups, church groups & senior citizens; gift shop w/sampling of pecans & pecan candy. Call for reservations & availability. Open Mid-October to Feb. 14: 9 a.m.-6 p.m. Monday-Saturday.

www.bensonparkpecans.com

41502 Benson Park Road
Shawnee, OK 74801
405-273-1235



18. Briar Patch Winery

From I-40: Take the exit for Warner/Porum. Go S. on Hwy. 2 for 14 mi. Look for the winery and pecan signs on the L./E. side of the road.

Briar Patch Winery specializes in farm wines, made from local fruit and berries such as blackberry and strawberry. The winery is open for tastings and parties. Catering is available. Wines are seasonally available, as are pecans. Briar Patch Winery is also home to mini donkeys for the kids to pet. Group tours available by appointment.

www.facebook.com/BriarPatchWinery

32574 S. Oklahoma 2
Porum, OK 74455
918-471-9292



15. Blanchard Farmers Market

In Blanchard: Located in the Ace Hardware parking lot.

Blanchard Farmers Market offers a wide array of fresh fruits & vegetables, along with plant materials. Whether you are looking for delicious produce, salad greens, herbs, honey, watermelons, peaches, farm-fresh eggs, meat items, cut flowers or quality Made in Oklahoma products, you must explore this seasonal, open-air market! Open May-September, 7:30 a.m.-noon Saturdays.

987 E. Veterans
Memorial Highway
Blanchard, OK 73010
405-344-6635



19. Bristow Chambers Farmers Market

Located at 4th & Main in Bristow.

The Bristow Chamber Farmers Market has fresh produce, meat, eggs and other locally grown and locally made products.

Bristow, OK 74010
918-857-2855



16. Blue Coyote Winery

Located 40 minutes NE of Tulsa on the Will Rogers Turnpike. Take the Adair exit, turn L. (E.) & go 1 mi., then turn L. (N.) on 429 Road & go 0.5 mi. The winery is on the R.

Enjoy wine & some great stories about our wines in a beautiful building with wood floors, stone fireplace, gift shop & selection of wines. Open 11 a.m.-5 p.m. Saturday & noon-5 p.m. Sunday, or by appointment.

www.bluecoyotewinery.com

9564 N. 429 Road
Adair, OK 74330
918-785-4727



20. Brookside Farmers Market

In Tulsa: Located on the NE corner of 41st & Peoria.

Seasonal farmers market providing the best local & organic produce, plants, herbs, baked goods, eggs, cheeses, meats, garden crafts, music & fun! Open May-October, 8 a.m.-noon Wednesdays.

www.tulsafarmersmarket.org

Tulsa, OK 74105
918-636-8419





21. Brown Ranch Hay Maze

Exit 24 off I-35 (7 mi. S. of Ardmore). Go 0.25 mi. E. to Hwy. 77, then 2 mi. S. on Hwy. 77. Located on the W. side of Hwy. 77 at Campbell Road.

The Brown Ranch Hay Maze is a ranch-atmosphere attraction where individuals of all ages can eat & play. This unique maze is redesigned each year & constructed from over 1 million pounds of hay! There are over 13 additional activities to enjoy, including a three-story hay castle, a corny gold mine, hay slides, even an area for chicken chunkin'. One price covers everything! Hot dogs, chips, drinks & s'mores are provided, along with open campfires for roasting. Bring the entire family or a large group to experience an Oklahoma Agritourism attraction like no other! Open 5-10 p.m. Thursday-Friday, 2-10 p.m. Saturday-Sunday. Special pricing is offered for groups of 25 or more people: school field trips, birthday parties, church groups, company outings & more. We are honored to provide a family-oriented environment for all ages to enjoy the ranch atmosphere. Thank you for supporting Oklahoma Agritourism. www.brownranchhaymaze.com

Overbrook, OK 73401
580-465-7937



25. Cabin Creek Berries

From the stoplight in Adair, go 6 mi. E. to 440 Road, then turn N. & go 4 mi. to 350 Road. Turn E. & go 0.5 mi., then S. 3/8 mi.

Cabin Creek Berries is a small, family-oriented farm with a goal to produce the best-tasting, most nutritious berry to share with others. Blackberries and blueberries are what we do best! Besides the U-pick option, we offer already-picked, cooled berries for those who don't have time to pick. Call for picking times. www.cabincreekberries.com

35401 S. 4405 Road
Big Cabin, OK 74332
918-953-9504



22. Brown's Farm and Garden LLC

From OKC: Take I-44 W. on the H.E. Bailey/Turner Turnpike toward Chickasha. Take the 1st Chickasha exit & go E. on Hwy. 92/Hwy. 9 for 2.5 mi. to CS 2880. Go N. (left) on CS 2880 2.25 mi.

We have a large pumpkin patch that covers 42 acres. We sell any amount - small and large orders. Wholesale pricing and delivery is available. www.brownsfarmandgarden.com

2185 CS 2880
Chickasha, OK 73018
405-222-9025



26. Caddo County Farmers Market

Caddo County Farmers Market offers a wide array of fresh fruits & vegetables, along with plant materials. Whether you are looking for delicious produce, salad greens, herbs, honey, watermelons, peaches, farm-fresh eggs, meat items, cut flowers or quality Made in Oklahoma products, you must explore this seasonal, open-air market! Open June-September, 8 a.m.-1 p.m. Tuesday & Friday. oces.okstate.edu/caddo/caddo-county-farmers-market

110 W. Central Blvd.
Anadarko, OK 73005
405-247-3376



23. Buffalo Creek Berry Farm

From I-40 and Morgan Road, go S. to SW 89th & Morgan. Turn E. for 0.5 mi. to Sloan Road. Farm is on the S. side of the road.

Buffalo Creek Berry Farm is a family-owned pick-your-own farm. We produce thornless blackberries, raspberries (red and black) and strawberries, as well as a wide variety of vegetables. www.facebook.com/Buffalo-Creek-Berry-Farm-Mustang-Oklahoma-806102856145936/?fref=ts

9211 Sloan Road
Mustang, OK 73064
405-412-4515



27. Cal2homa Christmas Tree and Mum Farm

I-40 to Hwy. 100 (Webbers Falls/Gore exit). Go over the Arkansas River Bridge to Gore & turn onto Hwy. 10 N. (at Harp's Grocery Store). Follow signs & stay on Hwy. 10 for 2.8 miles. Farm is on the R.

Cal2homa Christmas Tree & Mum Farm offers choose & cut Virginia pine, Leyland & Murray cypress, as well as premium noble fir, Fraser fir and Douglas fir. Refreshments served; offers a petting zoo and children's activity area. Also offers U-pick blueberries and chrysanthemums (fall garden mums) grown on the farm. U-pick blueberries: June-July, 9 a.m.-5 p.m. Thursday-Sunday. Call for opening picking date. Chrysanthemums: September-October, 9 a.m.-5 p.m. Saturday-Sunday. Christmas trees: Thanksgiving Friday-Dec. 23; Opening Weekend, 9 a.m.-7 p.m. Friday-Sunday; 4-7 p.m. Monday-Friday; 9 a.m.-7 p.m. Saturday-Sunday. www.facebook.com/Cal2Homa-Christmas-Tree-and-Mum-Farm-137389159634725

13822 S. Oklahoma 10
Gore, OK 74435
918-489-2876



24. C&H Garden Vineyard

Exit Memorial Road and head E. Go 7.2 mi. E. of I-35, then N. on Lopp Lane 0.25 mi. Vineyard is on the left, w/the gray two-story house.

Tour the 1,500-vine vineyard. Stroll the garden paths with numerous plants and flowers. Sit and enjoy the peace. This is the perfect place to let the kids play on the playground, gather chicken eggs, catch fish (guaranteed) in our catfish pond, have a family picnic or take part in our heirloom bulb exchange. Open 10 a.m.-4 p.m. Thursday-Saturday by appointment only.

14001 Lopp Lane
Jones, OK 73049
405-317-3484



28. Canadian River Farm Stand & Community Market

Located N. of Lexington & 6 mi. S. of Noble at Hwy. 77 & Slaughterville Road.

The Canadian River Farm Stand and Community Market strives to provide healthy food. The market is open noon-5 p.m. Sundays.

7050 Slaughterville Road
Lexington, OK 73051
405-872-5565





29. Canadian River Vineyards & Winery

Located N. of Lexington & 6 mi. S. of Noble at Hwy. 77 & Slaughterville Road.

Deck overlooking vineyards; wine produced from grapes grown locally & throughout Oklahoma; tasting room, gift shop, tours of the vineyards & winery. Open noon-5 p.m. daily.

www.canadianriverwinery.net

7050 Slaughterville Road
Lexington, OK 73051
405-872-5565



33. Cedar Post Farm

Bring your family to Cedar Post Farm this fall. Take a hay ride to the field to pick your own pumpkin or choose from the pre-picked patch. Ride the barrel train and navigate the hay and corn mazes. Watch the live cow milking demonstration and search for the queen bee in the observation hive. Watch chicks hatch and meet all the animals in the petting farm. Explore the hay fort and play the many outdoor games. On Friday and Saturday nights, grab your flashlight and take a thrilling trip through the maze. Open mid-September-end of October. Check Facebook for hours. Large groups, school tours and birthday parties welcome.

918-260-4572



30. Canadian Valley Farms

From I-35, take Hwy. 9 E. 4.5 miles to Hwy. 77, then S. 8.5 miles to Slaughterville Road. Take Slaughterville Road. E. 4.5 miles. Farm is on N. side of the road.

Canadian Valley farms is a sustainable family farm specializing in heirloom vegetables & heritage breeds of livestock for production. The farm offers seasonal U-pick opportunities and a fall pumpkin patch. Fresh produce from the farm can also be found at the Noble and Norman farmers markets.

www.facebook.com/Wooliver.Family.Farm

12781 Slaughterville Road
Lexington, OK 73051
405-708-3033



34. Cherokee Farmers Market

Located at the armory building at 2nd & Kansas.

Cherokee Farmers Market offers a wide array of fresh fruits & vegetables, along with plant materials. Whether you are looking for delicious produce, salad greens, herbs, honey, watermelons, peaches, farm-fresh eggs, meat items, cut flowers or quality Made in Oklahoma products, you must explore this seasonal, open-air market! Open June-October, 4-7 p.m. Thursdays.

Cherokee, OK 73728
580-596-6111



31. Canyon Berry Farms

From Claremore: Take Hwy. 20 east to S. 4170 Road/Lake Road. Turn L. onto Lake for 1 mi. Turn R. at E. 480 Rd./Blue Starr Drive. for 0.4 mi. Turn R. at Dickerson Road (look for the Canyon Berry Farms sign). The farm is the second drive on the R.

U-pick berry farm specializing in blueberries. Local honey, plants, plant materials, & other related products also available. Open June-August for berries. Call ahead or check Facebook for picking times and availability.

www.facebook.com/CanyonBerryFarms

20126 S. Dickerson Road
Claremore, OK 74017
918-344-9191



35. Cherry Street Farmers Market

In Tulsa: On 15th St. between Quaker & Rockford.

Seasonal farmers market providing the best local & organic produce, plants, herbs, baked goods, eggs, cheeses, meats, garden crafts, music & fun! Open April-October, 7-11 a.m. Saturdays.

www.tulsafarmersmarket.org

1327 E. 15th St.
Tulsa, OK 74120
918-636-8419



32. Cashion Farmers Market

The Cashion Farmers Market offers a wide array of fresh fruits & vegetables, along with plant materials. Whether you are looking for delicious produce, salad greens, herbs, honey, watermelons, peaches, farm-fresh eggs, meat items, cut flowers or quality Made in Oklahoma products, you must explore this seasonal, open-air market! Open March-September, 9 a.m.-noon the third Saturday of the month.

116 S. Main St.
Cashion, OK 73016
405-433-2243



36. Chester's Party Barn and Farm

Located 3 mi. N. of Hwy. 3 (Northwest Expressway) & Cimarron Road. Watch for the signs.

Open for birthday parties, school field trips, daycares, church groups & corporate picnics, w/some special events open to the public. Activities include pony rides, a petting zoo, inflatables, mazes, horseshoes & sack races. Annual Pumpkin Patch & Mystery Maze open to public in October. Call for hours.

www.chesterspartybarn.com

5201 Cimarron Road
Piedmont, OK 73078
405-373-1595





37. Chickasha Farmers Market

Located at the corner of 7th St. & Chickasha Ave.

Chickasha Farmers Market offers a wide array of fresh fruits & vegetables, along with plant materials. Whether you are looking for delicious produce, salad greens, herbs, honey, watermelons, peaches, farm-fresh eggs, meat items, cut flowers or quality Made in Oklahoma products, you must explore this seasonal, open-air market! The market provides the public an opportunity to buy fresh produce & products while supporting the local economy. Vendors are committed to raising high-quality produce with premium taste & maximum freshness. Open May-October, 7 a.m.-noon Tuesday & Saturday.

Chickasha, OK 73018
405-224-2216



41. Cleveland Farmers Market

In Cleveland: Downtown, next to City Hall.

Cleveland Farmers Market offers a wide array of fresh fruits & vegetables, along with plant materials. Whether you are looking for delicious produce, salad greens, herbs, honey, watermelons, peaches, farm-fresh eggs, meat items, cut flowers or quality Made in Oklahoma products, you must explore this seasonal, open-air market! Located downtown. Open June-October, 8-11 a.m. Saturday.
www.chamberofclevelandok.com

101 E. Pawnee St.
Cleveland, OK 74020
918-358-2131



38. City of Moore Farmers Market

Located at the Dr. Curtis Berry-Central Park in Moore.

The City of Moore Farmers Market offers a wide array of fresh fruits & vegetables, along with plant materials. Whether you are looking for delicious produce, salad greens, herbs, honey, watermelons, peaches, farm-fresh eggs, meat items, cut flowers or quality Made in Oklahoma products, you must explore this seasonal, open-air market! Open May-August; 4-7 p.m. Thursday, 8 a.m.-noon Saturday.

700 S. Broadway St.
Moore, OK 73160
405-793-5090



42. Coalgate Farmers Market

Located at the municipal park on the south side of town, across from U.S. 75.

The Coalgate Farmers Market offers a wide array of fresh fruits & vegetables, along with plant materials. Call for hours.

Coalgate, OK 74538
580-927-3695



39. Claremore Farmers Market

Located at the Claremore Expo Center, 400 Veterans Parkway, in the NE corner of the parking lot.

Claremore Farmers Market offers a wide array of fresh fruits & vegetables, along with plant materials. Whether you are looking for delicious produce, salad greens, herbs, honey, watermelons, peaches, farm-fresh eggs, meat items, cut flowers or quality Made in Oklahoma products, you must explore this seasonal, open-air market! Open May-October, 7 a.m.-noon Saturday, & July-August, 7 a.m.-noon Wednesday.

400 Veterans Parkway
Claremore, OK 74017
918-812-1987



43. Cornerstone Kids' Ranch

Take Hwy. 377 north from the Richardson Loop in Ada. Headed N., you will see the CLEET facility (Council on Law Enforcement Education and Training) on your left. Turn left just past CLEET onto Egypt Road. Follow this road for approximately 1 mile. Just past the Sandy Creek bridge, the road will "Y." Stay to the right. The ranch entrance will be on your right.

Cornerstone Kids' Ranch is a beautiful 160-acre ranch northwest of Ada. Ranch-sponsored programs include summer camps, birthday parties, the annual Pumpkin Patch and other events. Activities include hayrides, a hay maze, a hay slide, a diamond dig, a petting farm, pumpkins & much more. School field trips welcome by appointment. Open to the public 11 a.m.-6 p.m. Saturday., 3-7 p.m. Sun., 9 a.m.-2 p.m. Monday-Friday for pumpkins.
www.cornerstonekidsranch.com

11960 County Road
3536, Ada, OK 74820
405-250-3214



40. Clauren Ridge Vineyard & Winery

Clauren Ridge Vineyard & Winery is located just outside OKC in Edmond & offers a variety of wine crafted from our vineyards. Come for a visit and try them in our "rustic-Italian" tasting room overlooking the large crushing & fermentation area where wine is created. Clauren Ridge boasts Oklahoma's exclusive & spectacular wine cave, typically seen in the grape-growing regions of California & Europe - definitely unlike anything else in the state! This enchanting cave has two large rooms & is primarily used for aging wine in oak barrels, gourmet wine-tasting dinners, wedding receptions, "state-of-the-art" winery business meetings & corporate events.
www.claurenridge.com

6000 W. Waterloo Road
Edmond, OK 73025
405-412-8630



44. Couer du Vin

From I-35, take the exit for Hwy. 62 (23rd St.) E. to Peebly Road. Turn N./L. on Peebly Road. The vineyard is approximately 0.25 mi. north on the left.

Premium 5-acre vineyard producing high-quality grapes for winemaking along the banks of the North Canadian River. Varieties include Merlot, Cabernet Sauvignon, Zinfandel, Sangiovese, Barbera, Nebbiolo and Traminette.

3225 N. Peebly Road
Harrah, OK 73045
405-822-0197





45. Creekside Berry Farm

1 mi. W. of Le Flore on SE 110th Road (Salonia Road). First drive on the L., past the Indian Loop.

Creekside Berry Farm is a family-owned-&-operated U-pick farm. We offer several varieties of blueberries, a limited supply of blackberries & raspberries, & vegetables in season. Located 15 miles from the west end of the Talimena Drive.

www.creeksideberryfarm.com

17881 SE 110 Road
Red Oak, OK 74563
918-448-8387
918-448-8365



49. DaZe in a MaZe

Located 2 mi. N. of the Hwy. 51 & Hwy. 74 junction.

Mazes geared to everyone, from the very young to the very young at heart. For toddlers, an indoor square-bale maze; for everyone, large corn & themed hay mazes; for the brave, the difficult & dark jungle maze. Select a pumpkin, take hay-rack rides, feed/pet farm animals, picnic, enjoy the playground.

www.dazeinamaze.com

Marshall, OK 73056
580-234-6293



46. Crestview Inc. Farms

Go N. on I-35 to Exit 143 (Covell). Go E. on Covell to Douglas. Go N. on Douglas to Sorghum Mills Road. The farm sits on the NW corner of Sorghum Mill Road & Douglas Blvd.

Dedicated to organic & high-quality gardening practices. Shop for a vast variety of cool & warm-weather seasonal produce, fresh herbs, herb plants, vegetable plants, even U-pick blackberries. Call ahead for availability.

www.crestvieworganicfarms.net

5521 N. Douglas Blvd.
Arcadia, OK 73007
405-823-2430



50. DeAngel Farms & Winery

From Hwy. 62 (Veterans Memorial Highway) in Blanchard, turn S. on S. County Line Ave. & travel 1.3 miles – winery is on the right.

This farm and winery in Blanchard has an extensive wine list that includes both wines from home-grown fruits and grapes from across the state. All of the produce is grown on the farm and available in season. The farm has Rhode Island red chickens that produce beautiful brown eggs almost year-round. It also has a variety of canned goods and homemade breads produced in its commercial kitchen using only the finest ingredients. Don't miss the fine soaps and lotions in the gift shop!

www.deangelfarms.net

3041 S. CL Road
Blanchard, OK 73010
405-996-0914

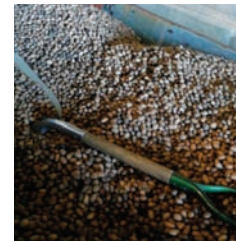


47. Cushing Farmers Market

In Cushing: Located at the NW corner of Broadway & Cleveland.

Cushing Farmers Market offers a wide array of fresh fruits & vegetables, along with plant materials. Whether you are looking for delicious produce, salad greens, herbs, honey, watermelons, peaches, farm-fresh eggs, meat items, cut flowers or quality Made in Oklahoma products, you must explore this seasonal, open-air market! Open June-October, 1-6 p.m. Thursday.

Cushing, OK 74023
918-399-3480



51. Deep Fork Pecans LLC

Located west of Beggs off Hwy. 16. From I-44, take the Bristow exit. Go S. through Bristow to Hwy. 16. Go L./E. about 20 mi. (through the town of Slick). Look for Henson's Feed Store on the R.; turn after Henson's onto Dentonville Road. Go S. 1 mi. to Herrick Road. The farm is on the NE corner of Herrick and Dentonville. Look for the sign and red gates. From Hwy. 75, go west on Hwy. 16. 5 mi. W. of Beggs, turn L./S. onto Dentonville Road. Go S. 1 mi. to Herrick Road. The farm is on the NE corner of Herrick and Dentonville. Look for the sign and red gates.

The Deep Fork Pecan store features Oklahoma native pecans in the shell, as well as pecan wood-smoking chips and firewood. We offer custom pecan-cracking. Ask about our fundraising program or holiday gifts. By appointment only.

www.deepforkpecans.com

3099 Herrick Road
Beggs, OK 74421
918-267-1377



48. D & L Christmas Tree Farm

From Main St. in Fletcher: go to Cole Ave. Cole Ave. will form a "T" on Rieck Road. Turn S. on Rieck Rd., go 0.7 mi. to Watts Road., turn E. & go 1.7 mi. The farm sits on the N. side of the road. From I-44 (The H.E. Bailey Turnpike): take Exit 62. At the stop sign, turn S. & go 1.6 mi. on NE 180th St. Turn W. on N. Drive, go 3.0 mi. & turn S. on Sycamore Road (which turns into Rieck Road). Go 0.8 mi. to Watts Road & turn E.; go 1.7 mi. to the farm that sits on the N. side of the road.

Choose & cut Christmas tree farm specializing in Oklahoma-grown noble, grand, fir & Fraser fir trees. Wreaths & pre-cut trees also available. Open Thanksgiving-Christmas Eve; 1-5 p.m. Sunday-Friday & 10 a.m.-5:30 p.m. Saturday.

Fletcher, OK 73541
580-549-6994





52. Double Diamond Farms & Greenhouse

From the four-way stoplight in Hobart, go 0.5 miles S. on Broadway. Farm sign is on W. side of the road.

Double Diamond Farms and Greenhouse LLC is a family owned farm for over 100 years and is located in southwestern Oklahoma just a short drive from Quartz Mountains. Learn about aquaponics, Alpacas, honey bees, Julianna pigs, Dwarf Nigerian goats, Lowline cattle and several breeds of rabbits. Visitors can purchase fresh honey, handmade Alpaca products and a wide variety of Oklahoma proven plants. Greenhouse is open March-June and September-November. School groups are welcome. Tours, field trips and learning activities are by appointment.

1501 S. Broadway Ave.
Hobart, OK 73651
580-678-3040
580-678-8712



56. El Reno Farmers Market

In El Reno: Go S. on Hwy. 81. Right before the first stoplight on the W. side of the street, you will see Ross Feed & Seed Store. The market is directly N. of Ross Feed & Seed.

El Reno Farmers Market offers a wide array of fresh fruits & vegetables, along with plant materials. Whether you are looking for delicious produce, salad greens, herbs, honey, watermelons, peaches, farm-fresh eggs, meat items, cut flowers or quality Made in Oklahoma products you must explore this seasonal, open-air market! Open June-September., 8 a.m.-noon Wednesday. & Saturday.



100 S. Choctaw Ave.
El Reno, OK 73036
405-262-8888



53. Downtown Poteau Farmers Market and Bazaar

Located in the town square.

Offers a wide array of fresh fruits & vegetables along with plant materials. Whether you are looking for delicious produce, salad greens, herbs, honey, watermelons, peaches, farm fresh eggs, meat items, cut flowers or quality Made in Oklahoma products then you must explore this seasonal market.

www.facebook.com/PoteauFarmersMarket

220 Dewey Ave.
Poteau, OK 74953
918-385-2594



57. Endicott Farms LLC

From Tulsa: Take Hwy. 75 S., turn E./L. on 181st St. S., then turn S./R. on Lewis Ave. Continue on Lewis until sharp left curve at 211th, then travel E. approx. 0.25 mi. The farm will be on the S. side of the road.

A family-friendly blueberry and blackberry U-pick farm w/ seasonal pecan production less than 30 minutes from Tulsa. The well-maintained berry field makes it an enjoyable experience for all ages. Diverse berry selection with nearly a dozen varieties available. Buckets and bags provided.

www.endicottfarms.com

13310 Adams Road
Liberty-Mounds, OK 74047
918-344-4582



54. Duncan Farmers Market

Located in the town square.

Offers a wide array of fresh fruits & vegetables along with plant materials. Whether you are looking for delicious produce, salad greens, herbs, honey, watermelons, peaches, farm fresh eggs, meat items, cut flowers or quality Made in Oklahoma products then you must explore this seasonal market.

www.facebook.com/groups/686954331425939

2103 W. Beech Ave.
Duncan, OK 73533
580-252-8000



58. Enid Farmers Market

In Enid at the junction of Grand & Garriott in front of the train depot.

Enid Farmers Market offers a wide array of fresh fruits & vegetables, along with plant materials. Whether you are looking for delicious produce, salad greens, herbs, honey, watermelons, peaches, farm-fresh eggs, meat items, cut flowers or quality Made in Oklahoma products, you must explore this seasonal, open-air market! Open May-October. 8-11 a.m. Saturday.

Enid, OK 73701
580-977-4420



55. Edmond Farmers Market

Located at the Festival Market Place on 1st St., just W. of Broadway in downtown Edmond. Take I-35 N. to Exit 141; go W. to Broadway; go N. 1 block to 1st St., then 1 block W.; market is located on the S. side of the street, just before the railroad tracks.

This popular market carries many Oklahoma-grown & -made items, including fresh produce, local honey, eggs, cut flowers, water-garden plants, pies & pastries, pumpkins, fresh bakery items, & black Angus beef! The market continues its diversity by offering custom wood products, fresh salsa, reusable bags, cookbooks, T-shirts, sauces & spices, & homemade soap & spa products. Open Mid-April through October, 8 a.m.-1 p.m. Saturday & Wednesday; June 6-Aug. 15, open 8 a.m.-1 p.m. Wednesday.

www.edmondok.com/365/Farmers-Market

26 W. First St.
Edmond, OK 73034
405-359-4630



59. Entwined Vines

From Anadarko: Take Central Blvd. (County Road 1340) 4.5 mi. W. of Randlett Park. Winery is on the N. side of the road.

Entwined Vines is a winery featuring 23 types of wines made from 8 varieties of grapes grown in the 3-acre on-site vineyard. A tasting room and gift shop including wine accessories and homemade wine jellies are also available. The tasting room and gift shop are open Wed.-Fri. 12 p.m. - 6 p.m. and Sat. 1 p.m. - 6 p.m.

www.facebook.com/Entwinedvineswinery

17134 CR 1340
Anadarko, OK 73005
405-320-0452





60. Eufaula Farmers Market

Located at the Eufaula Public Library, 0.5 block W. of Main St.

Seasonal farmers market offering locally grown fruits & vegetables, eggs & baked goods, as well as arts & crafts produced by local artisans. Open Memorial Day-September, 8 a.m.-noon Tuesday & Saturday.

301 S. 1st St.
Eufaula, OK 74432
918-452-3648



64. Gander Way Vineyards & Winery LLC

From Hwy. 412 at Sand Springs, take Exit 129 N. 10 mi. to Rock School Road. Turn R. & go 1 mi. to N. 100 W. Ave., then turn L. & go approx. 0.75 mi. to the winery, located on the L.

We are a fully operational winery, complete with tasting bar. Our facilities provide a comfortable setting for individual or group wine tastings, weddings, birthdays, anniversaries, meetings & other celebrations. For the convenience of catering, we have a fully functional kitchen. Open 1-5 p.m. Wednesday-Friday; 10 a.m.-5 p.m. Saturday.

www.ganderway.com

8304 N. 100 W. Ave.
Skiatook, OK 74070
918-245-0516



61. Fish Tales Winery & Vineyards

From Broken Bow, take Hwy. 259 6 mi. N. Winery is just across from the S. entrance to Beaver's Bend, located on the W. side of the road.

We have combined our love of Oklahoma with our love of fly-fishing & our love of winemaking to bring you Fish Tales Winery & Vineyards. Muscadine vines were initially planted at the family home at Little River Ranch in SE Pushmataha County, & the next-larger vineyard was planted on our property in E. McCurtain County. Several rows of muscadines can be seen at our winery location in Broken Bow. Open noon-8 p.m. Tuesday-Saturday.

www.fishtaleswine.com

17 Oak Leaf Lane
Broken Bow, OK 74728
580-494-6115



65. Gibson Gardens

From Tulsa: Take Hwy. 75 S. to 181st St. Turn E. on 181st St. Go about 6 miles E. to 73rd E. Ave. Turn S. on 73rd E. Ave. (gravel road). Farm is at the end of the road through steel-pipe gates.

Gibson Gardens is a small but growing family farm that specializes in U-pick strawberries and thornless blackberries. Beefsteak & heirloom tomatoes, sweet candy onions, & slicing cucumbers are specialties of ours, too. We pride ourselves on quality, flavor and natural growing practices. Check out our Facebook page for hours of operation, as they vary by picking season. Our U-pick operation is by appointment only - contact us at gibson22@olp.net to get on our email list for farm information and to set up appointments.

www.facebook.com/Gibson.Gardens

18406 S. 73rd E. Ave.
Bixby, OK 74008
918-638-3858



62. Flying G Ranch

From the intersection of Hwy. 51 & 97 in Sand Springs, go W. on Hwy. 51 for 5.5 mi. Ranch is located on the S. side of the highway.

Working polled Hereford cattle ranch with cattle for sale year-round. Includes a working pecan orchard with seasonal retail shop featuring a range of goodies. Open Nov. 1-Dec. 31, 9 a.m.-6 p.m. daily, or otherwise by appointment.

www.flying-g-ranch.com

19402 W. Oklahoma 51
Sand Springs, OK 74063
918-245-8854
918-245-2423



66. Gibson's Farm

Take I-44 to the Afton exit. Head N. on Hwy. 69 (which is also Hwy. 66 & 59) toward Miami. The farm is on the L./W. side of the road, 1 mile N. of the technology center.

Gibson's Farm consists of 18 acres of farmland & 22 acres of pasture. Pick your own pumpkins & play in the hay maze in the fall. We have a produce stand on the farm that carries pork, beef & produce while supplies last throughout the year. All our crops are grown using non-GMO seeds & natural liquid fertilizer. All of our animals are fed without any added antibiotics, hormones or genetically modified feed. Families and field trips welcome!

52991 E. 190 Road
Afton, OK 74331
417-622-7291



63. Forbidden Fruits Farm & Vineyards

From the N.: Take I-44 (H.E. Bailey Turnpike) to exit 62 (Cyril/Fletcher exit). Head N. on Whitfield Road (L. at the end of the ramp). Whitfield Road will eventually turn W. and intersect with Route 277. Go S. (left) on Route 277 for 1 mi. to E. 1480 Road. Turn E. (L.) onto E. 1480 Road. You will see the farm straight ahead. Total drive is about 10 minutes off the highway. From the S.: Take I-44 (H.E. Bailey Turnpike) to exit 53 (Elgin exit). Head E. (R.) on Route 277. (Technically, you're on 277 N, but the road is going due E. at this point.) Stay on 277, which turns N. shortly. When you pass the Comanche-Caddo county line, which is about 6 mi., take the next right (E.) on E. 1480 Road. The farm is straight ahead. Total drive is 17 minutes off the highway.

We raise blackberries organically. To keep up with picking times, which are by appointment only (typically from Mid-May to the end of July), follow us on Facebook. Also check out Woods & Waters Winery & Vineyard, open all year with harvest events in August and September.

www.forbiddenfruitsfarm.com

232000 CR 1480
Cyril, OK 73029
405-757-7670



67. Girls Gone Wine

10 mi. N. on Hwy. 259 (Hochatown) from Broken Bow.

Taste, select, make & bottle your favorite wines for gifts or special occasions, or select your favorite bottle of wine & browse the gift shop. March-October, open noon-8 p.m. Monday-Saturday; November-February, open noon-6 p.m. Tuesday-Friday & noon-8 p.m. Saturday.

www.thegirlsgonewine.com

10216 N. U.S. 259
Broken Bow, OK 74728
580-306-9463





68. Goddard Christmas Tree Farm

Exit I-35 at Robinson St. & go E. 7 mi. Plantation is on N. side of Robinson, 0.25 mi. E. of 48th St.

Choose & cut scotch pine, Virginia pine, wreaths & greenery; a limited number of pre-cut imported firs are available. Open after Thanksgiving, 9 a.m.-5 p.m. Saturday & 1-5 p.m. Sunday.

5209 E. Robinson St.
Norman, OK 73026
405-364-0320



72. Guymon Farmers Market

Located at front of the courthouse on Main St.

Guymon Farmers Market offers a wide array of fresh fruits & vegetables, along with plant materials. Whether you are looking for delicious produce, salad greens, herbs, honey, watermelons, peaches, farm-fresh eggs, meat items, cut flowers or quality Made in Oklahoma products, you must explore this seasonal, open-air market! Open July-Sept., 8 a.m.-noon Saturday.

www.mainstreetguymon.com

Guymon, OK 74932
580-338-6246



69. GraysLland Acres

From Pryor, go 2 mi. N. on Hwy. 69. Turn E. on W. 470 Road & go 6 mi., then turn N. on 438 Road for 1 mi. We are on E. side of the road. Look for the cream-colored buildings with the red roofs.

GraysLland Acres is a 20-acre milk goat & llama farm. May-September is our milking season – this is your chance to milk a goat. We have 3 varieties of goats: Nubians, Alpines and Lamanchas. Our llamas eat out of your hand, and if you are lucky, you might get a kiss from one. We have fresh milk you can try, and soaps and lotions made from our goats' milk. Call to schedule a visit.

www.graysllandacres.com

2960 N. 438 Road
Pryor, OK 74361
918-373-3733



73. Happy Day Farms Pumpkin Patch

From Terral: 2.5 mi. E. of Hwy. 81.

This working farm grows watermelons & pumpkins, & offers educational presentations for schools & the general public. Come enjoy hayrides, a petting zoo, a giant tree house, pedal carts, pony rides, sand & corn boxes, a jumping pillow, duck races, bungee jumping, zip-lining, plus much, much more. Enjoy one of Oklahoma's neatest Christmas hayrides, complete with music & lots of lights!

Terral, OK 73569
580-437-2600



70. Greenwood Farmers Market

The Greenwood Farmers Market offers a wide array of fresh fruits & vegetables, along with plant materials. Whether you are looking for delicious produce, salad greens, herbs, honey, watermelons, peaches, farm-fresh eggs, meat items, cut flowers or quality Made in Oklahoma products, you must explore this seasonal, open-air market! Open June-September, 6-8 p.m. every Saturday.

914 N. Greenwood Ave.
Tulsa, OK 74106
918-706-1606



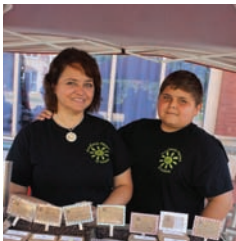
74. Hobart Farmers Market

In Hobart, located at the Kiowa County courthouse square.

Hobart Farmers Market offers a wide array of fresh fruits & vegetables, along with plant materials. Whether you are looking for delicious produce, salad greens, herbs, honey, watermelons, peaches, farm-fresh eggs, meat items, cut flowers or quality Made in Oklahoma products, you must explore this seasonal, open-air market! Open June-September, 7:30 a.m.-noon Wednesday & Saturday.

www.hobartmainst.com

Hobart, OK 73651
580-726-5686



71. Guthrie Farmers Market

Located at the NW corner of Division St. & Harrison Ave.

Guthrie Farmers Market offers a wide array of fresh fruits & vegetables, along with plant materials. Whether you are looking for delicious produce, salad greens, herbs, honey, watermelons, peaches, farm-fresh eggs, meat items, cut flowers or quality Made in Oklahoma products, you must explore this seasonal, open-air market! Open June-Sept., 8 a.m.-noon Saturday.

www.guthriechamber.com

Guthrie, OK 73044
405-282-1947



75. Hoepfner's Kiwi Farm

Go 7 mi. W. of Eufaula on Hwy. 9, then 4 mi. S. on county road.

6 acres of hardy kiwis, plus gift area with potted kiwi plants. Hoepfner's Kiwi Soap contains a high glycerin content, kiwi, vitamin E, almond, jojoba oils and aloe vera. We make seven fragrances, plus the clear. The kiwi-mist perfume smells wonderful! Free guided tours year-round. Free admission. Open 10 a.m.-6pm Friday-Wednesday.

Eufaula, OK 74432
918-490-3622





76. Hoffman Pecan Farm

From Hwy. 51 and Perkins Road (in Stillwater), travel E. on 51 for 5 mi. and turn R. onto S. Union Road for 2 mi. Turn L. onto E. 32nd St.; the destination will be on the left.

Hoffman Pecan Farm offers fresh papershell pecans, custom cracking & blowing, graft wood, & custom grafting. For over 50 years, we have been growing & selling the highest-quality pecans available. From Nov. 1 to March 1, open 8 a.m.-5 p.m. Monday-Saturday; open by appointment during the off season.

www.hoffmanpecanfarm.com

7104 E. 32nd Ave.
Stillwater, OK 74074
405-372-3583



80. Huldys Farm Inc.

From Catoosa: Go E. on Hwy. 412 11 mi., then S. on 4195 Road 1/2 mi. to dead end. Turn E. to driveway on N. side. From Claremore: Go S. on Hwy. 88 11 mi., then W. on 589 Road 1/4 mi. Turn W. on 590 Road & travel through 4-way stop to driveway on N. side.

U-pick – or we pick! Strawberries, blueberries & blackberries. Open mid-April through early August, Monday-Saturday. Strawberries are 8 a.m.-6 p.m.; blueberries & blackberries are 8 a.m.-1 p.m. & evenings by appointment.

www.huldysfarm.com

16525 E. 590 Road
Inola, OK 74036
918-261-9003



77. HoneyBear Ranch

From Broken Bow, take Hwy. 3 W. for 2.8 mi. At the Fina gas station, turn N. & travel 0.9 mi. Our sign is on the L. The sales area is by the big white barn. Watch out for the guineas.

Plants & produce from the farm. Schedule an appointment for a tour; check website for hours.

www.honeybear-ranch.com

897 Redwood Road
Broken Bow, OK 74728
580-306-6020
580-306-6021



81. I've Got Bugs

From Altus: At the junction of Hwy. 62 & Hwy. 283, go 10.8 mi. S. on Hwy. 283, then 0.8 mi. W. on CR E175. Continue 0.2 mi. N. on Kahle Ave.

Come enjoy all the family-friendly activities this diverse Agritourism farm has to offer! In the fall, pick pumpkins in the pumpkin patch, play games and see barnyard animals in the petting farm. Learn about honeybees and purchase fresh, local honey. It's also one of the only places in Oklahoma where you can participate in fly-fishing activities, including fly-tying and casting lessons – available year-round and by appointment. The pumpkin patch is open every weekend in October, 9 p.m.-5 p.m. Saturdays & noon-5 p.m. Sundays.

995 Third St.
Elmer, OK 73539
580-481-0524



78. Horn Canna Farm

On I-40, take exit 88, then go S. on Hwy. 58 approx. 28 mi. to Alfalfa (CR 1240). Travel E. 1.25 mi. on SSR.

World's largest exclusive canna growers, featuring 28 varieties on approx. 130 acres. Blooming period is July until first frost. Call ahead for conditions. Group & individual tours are available by appointment.

www.cannas.net

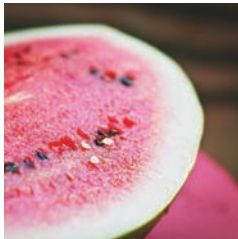
3043 CR 1240
Carnegie, OK 73015
580-637-2327



82. Idabel Farmers Market

Idabel Farmers Market offers a wide array of fresh fruits & vegetables, along with plant materials. Whether you are looking for delicious produce, salad greens, herbs, honey, watermelons, peaches, farm-fresh eggs, meat items, cut flowers or quality Made in Oklahoma products, you must explore this seasonal, open-air market! Open April-October, 7 a.m.-noon Saturday.

5 W. Main St.
Idabel, OK 74745
580-286-7608



79. Hugo Farmers Market

Located between DHS and the Boys and Girls Club, 1 block N. of McDonald's.

Hugo Farmers Market offers a wide array of fresh fruits & vegetables, along with plant materials. Whether you are looking for delicious produce, salad greens, herbs, watermelons, peaches or quality Made in Oklahoma products, you must explore this seasonal, open-air market! Open April-October, 8 a.m.-6 p.m. Monday-Friday, 8 a.m.-noon Saturday.

www.facebook.com/HugoFarmersMarket

1509 E. Kirk St.
Hugo, OK 74727
580-743-3450



83. Indian Creek Village Winery

Idabel From the junction of Hwy. 412 & 58: Go 3 mi. W. on Hwy. 412, then 0.5 mi. N. on N2640 Road.

Our Village Inn is a charming turn-of-the-century-style bed & breakfast, stylishly remodeled into one of the premier romantic getaways in northwest Oklahoma. The lodge makes you feel like you are in another place! Includes a wedding chapel, event center and 18 different wines. It's the perfect place for a wedding, family reunion, birthday, class reunion, or escape from reality for a weekend. Fine dining is available with reservations to make your romantic escape to the country complete. Free concerts are offered every Sunday on the patio or inside, depending on the weather. Escape the busy world and enjoy Indian Creek Village Winery.

www.indiancreekvillagewinery.net

42595 S. 264 Road
Ringwood, OK 73768
580-554-9463
580-883-2353





84. J5 Farm LLC

See the website for full directions.

A working farm and ranch with cattle, sheep, goats, chickens & turkeys, plus U-pick strawberries & vegetables. J5 Farm is a family-friendly rural experience that is both fun & educational. The farm is ideal for groups, school field trips & others interested in nature, agriculture, animals & the local food movement.

www.J5.farm

RR 2, Box 1220
Stilwell, OK 74960
937-553-2769



88. Just Right Alpacas

Call for directions.

Just Right Alpacas is located in the beautiful, wooded rolling hills just east of Edmond, providing the ultimate alpaca experience with more than 30 animals. Feed and touch these gentle creatures and learn the many ways to utilize their luxurious fleece. Picnic on the porch and watch the animals graze. We provide individual or group tours with our alpacas, knitting studio and store. Just let us know your interest, and we will share. Call to schedule a visit.

www.justrightalpacas.com

13301 N. Douglas Blvd.
Jones, OK 73049
405-590-5720



85. Jahn's Pumpkin Hill

From OKC: Take I-44W, H.E. Bailey Turnpike to Cyril/Fletcher exit. Go 2.25 mi. N., 1 mi. E., 0.25 mi. N.; located on the W. side of the road. From Cyril: From the Cyril cemetery, follow CR 1470 straight E. 2.5 mi. to CS 2710. Turn L. 0.25 mi. From Lawton: Take I-44E to Elgin exit & follow 277N through Fletcher. Turn E. at the Cyril cemetery on Whitfield Road/CR 1470. Go E. 2.5 mi., turn N. & go 0.25 mi.; Pumpkin Hill is on the W. side of the road. From Chickasha/Duncan: Follow Hwy. 81 to 277 W. through Cement. Turn S. onto CS 2710. Follow CS 2710 for 3 mi.; farm is on the R. Watch for signs for Pumpkin Hill. We welcome calls from lost drivers! Call us from the road.

Pumpkin patch offers educational adventure in agriculture on a working farm. Pick pumpkins in October. Enjoy a tractor-pulled farm tour, animals for petting & wide-open spaces. Large groups, please make reservations in advance. Schedule early to secure your preferred date.

www.jahnpumpkinhill.com

Cyril, OK 73029
580-464-3419



89. Kenny Farms

From Lakeview Drive in Woodward, go 1 mi. E. on Hwy. 412. Turn N. over the railroad, then travel E. on County Road 40. Go 0.5 mi. to farm.

At Kenny Farms, we are opening our gates & welcoming all who wish to experience the wonderful, laid-back life of country living. Come pick out your pumpkin, then pet and play with mini pigs, horses, donkeys, bunnies, goats, chickens & ducks. You can also enjoy a plethora of activities, including pedal cars, a tractor swing set, a corn pit, a bounce obstacle course, a pumpkin slingshot & more! Relax by the fire pit, eat a hot dog or slice of pumpkin pie, and take in the fresh country air. At Kenny Farms, we know you by name & treat you like family. Open every weekend in October: 10 a.m.-8 p.m. Saturday, 1-6 p.m. Sunday. See you at the farm!

www.facebook.com/kennyfarmsofwoodwardoklahoma

205562 E. CR 40
Woodward, OK 73801
405-714-3453



86. JANDA Bend Christmas Trees Farm

From Tahlequah: 9 mi. E. on Hwy. 51. Go 0.5 mi. E. of Barren Fork Creek Bridge, then turn NE on McLemore Hollow Road. Proceed 0.7 mi. to farm on L.

Farm offers Virginia pine, scotch pine, Leyland cypress & other Oklahoma-grown trees. Opening day is the Friday after Thanksgiving, 10 a.m.-5 p.m.; open 2-5 p.m. Friday, 10 a.m.-5 p.m. Saturday & 1-5 p.m. Sunday. Other times by appointment; call for availability.

www.jandabendchristmastrees.com

26426 E. McLemore
Hollow Road
Stilwell, OK 74960
918-207-2404



90. Kudo's Medicinal Herb Farm

From Norman: Go E. on Alameda 9 mi., then N. on 108th 1.1 mi. Go W. on Kunkel Ave.

Learn about the growing and processing of medicinal herbs while enjoying the country. Stay overnight in the eco-friendly home. Call to schedule a visit or stay.

10600 Kunkel Ave.
Norman, OK 73026
405-558-1874



87. Johnston County Farmers Market in Tishomingo

Located at the intersection of Byrd St. & Main Ave.

The Johnston County Farmers Market in Tishomingo is a place for consumers to purchase freshly grown fruits & vegetables. The market is a part of the OK-Grown network, which ensures that the products sold are produced in Oklahoma. Open May-October, 8 a.m.-noon Saturday.

Tishomingo, OK 73460
580-371-5604



91. Latimer County Farmers Market

Latimer County Farmers Market offers a wide array of fresh fruits & vegetables, along with plant materials. Whether you are looking for delicious produce, salad greens, herbs, honey, watermelons, peaches, farm-fresh eggs, meat items, cut flowers or quality Made in Oklahoma products, you must explore this seasonal, open-air market! Open June-October, 9 a.m.-1 p.m. Wednesday & Friday.

302 W. Main St.
Wilburton, OK 74578
918-465-2254





92. Lavender Valley Acres

From Apache: At the T-stop on the N. end of town (Hwy. 19, 62 & 281), turn W. & go 4.25 mi. on Hwy. 19. Turn N. on Tar Road (CS 2550) & go 5 mi, then turn W. on gravel road (CR 1410). Go 0.75 mi.

Walk through the lavender garden, browse our gift shop for lavender soaps, lotions & culinary lavender products, & watch exotic peacocks on the grounds. Open to public & school groups mid-March through mid-July, 9 a.m.-4 p.m. Wednesday-Sunday, or call ahead to schedule an appointment.

www.lavendervalleyacres.com

10041 CR 1410
Apache, OK 73006
580-588-2855



96. Living Kitchen Farm & Dairy

Living Kitchen is located between Bristow & Stroud off Historic Route 66.

Small artisanal goat dairy & farm on 400 acres offering customers fresh raw goat milk, cheeses, eggs & seasonal vegetables. In spring/summer, enjoy farm-to-table dinners in a beautiful turn-of-the-century log cabin. Call in advance for appointments/reservations.

www.livingkitchenfarmanddairy.com

25198 S. 481st. W. Ave.
Depew, OK 74028
918-284-8169



93. Lawton Farmers Market

Located at the Comanche County Fairgrounds.

Lawton Farmers Market offers a wide array of fresh fruits & vegetables, along with plant materials. Whether you are looking for delicious produce, salad greens, herbs, honey, watermelons, peaches, farm-fresh eggs, meat items, cut flowers or quality Made in Oklahoma products, you must explore this seasonal, open-air market! Open April-October, 8 a.m.-noon Wednesday & Saturday.

lawtonfarmersmarket.com

920 SW Sheridan Road
Lawton, OK 73505
940-733-7122



97. Magnolia Blossom Ranch

From OKC, take I-44W to Exit 107, which takes you to Main St. in Newcastle. Take Main to NW 16th St. & turn W. Drive 2.5 mi. to the ranch, located on the N. side of NW 16th St.

A trip to Magnolia Blossom Ranch alpaca farm gives you the opportunity to tour the farm & feel one of the world's finest, most luxurious natural fibers. Alpaca fleece is soft as cashmere, warmer & lighter than wool, & naturally hypoallergenic. Pack a picnic lunch, tour the farm shop for alpaca products and interact with the alpacas.

2901 NW 16th St.
Newcastle, OK 73065
405-412-4845



94. Lil Gladys Farm and Pumpkin Patch

Take Hwy. 9, 5.5 mi. W. of Whitefield. Turn N. at CR 4312 for 0.75 mi. Farm is on the L.

U-pick pumpkins and farm-grown gourds. Play games & pick a pumpkin on the farm. Nighttime hayrides in late October, Friday/Saturday only.

www.lilgladysfarm.com

10084 N. CR 4312
Stigler, OK 74462
405-694-8746



98. Main Street Farmers Market Mangum

Located at the Greer County courthouse square.

Main Street Farmers Market in Mangum offers a wide array of fresh fruits & vegetables, along with plant materials. Whether you are looking for delicious produce, salad greens, herbs, honey, watermelons, peaches, farm-fresh eggs, meat items, cut flowers or quality Made in Oklahoma products, you must explore this seasonal, open-air market! Open June-September, 4-6 p.m. Wednesday & 9 a.m.-noon Saturday.

Mangum, OK 73554
580-782-3770



95. Livesay Orchards

From Tulsa: Start at Broken Arrow Expressway & take the last free exit, Hwy. 51 (Coweta). At Coweta, take Hwy. 51B toward Porter. Watch for Livesay Orchards signs. Alternately, start at Muskogee Turnpike E., take exit 19 S. & follow Livesay Orchards signs. From the E.: Do not use Muskogee turnpike - no exit ramp. Take Hwy. 69 onto 51B, heading W. to Porter. At Porter, turn S. at Belaire St. (413th E. Ave.) & follow the Livesay Orchards signs.

Peach orchard & farmers market sells homegrown peaches, watermelons, apples, pumpkins, fruits & vegetables, jams, dressings, honey, & sorghum. Open mid-June through October, 8 a.m.-6 p.m. Monday-Saturday, plus Sunday afternoons. Offers Pumpkin Playland & hayride 10 a.m.-5 p.m. Saturday, 1-5 p.m. Sunday. Call for availability.

www.livesayorchards.com

39232 E. 231st. St. S.
Porter, OK 74454
918-483-2102



99. Maple Creek Berry Farm

From Hwy. 59, take the Poteau Scenic Bypass to the Pleasant Valley Road exit. Go W. on Pleasant Valley Road approx. 2 mi. to the farm.

U-pick blueberry farm in beautiful hillside setting. Buckets & take-home containers provided. Open in the summer, 6-8 p.m. Tuesday & 7-11 a.m. Saturday.

www.oklahomablueberries.com

33423 Pleasant
Valley Road
Poteau, OK 74953
918-658-9139





100. Martinbird Tree Farm

From OKC: Take I-44 S. to Hwy. 37 (Tuttle/Minco exit) & go W. 5.8 mi. on Hwy. 37. Look for sign on the N. side of the road.

Virginia pine, scotch pine, Austrian pine, loblolly pine, Colorado blue spruce, Norway spruce, pinyon pine & other Oklahoma-grown trees. Choose & cut, balled & burlapped, greenery, retail & wholesale. Free hot chocolate. Open the Friday after Thanksgiving to Christmas Eve. Call for hours & availability.

513 Ridgewood Drive
Tuttle, OK 73089
405-381-2910



104. Meadow Blackberry Farm

Take Hwy. 117 (Taft St.) in Sapulpa E. to Pioneer St. Turn L. onto Pioneer, then L. on Westgreen Way. The farm is at the end of the road, straight ahead.

Meadow Blackberry Farm sits in the heart of Sapulpa. The farm features 2,000 Natchez & other blackberry plants with wide rows for easy picking. Come pick at the farm June & July as supplies last.

www.facebook.com/Meadow-Blackberry-Farm-743368605688942

3200 Westgreen Way
Sapulpa, OK 74066
918-227-1987



101. Mayes County Farmers Market in Pryor

Located at Whitaker Park.

Mayes County Farmers Market offers a wide array of fresh fruits & vegetables, along with plant materials. Whether you are looking for delicious produce, salad greens, herbs, honey, watermelons, peaches, farm-fresh eggs, meat items, cut flowers or quality Made in Oklahoma products, you must explore this seasonal, open-air market! Open May-September, 8-11 a.m. Saturday.

Pryor, OK 74361
918-803-4437



105. Mid Del Farmers Market

In Midwest City: Located at the community center parking lot at the corner of Midwest Blvd. & Reno Ave.

Mid Del Farmers Market offers a wide array of fresh fruits & vegetables, along with plant materials. Whether you are looking for delicious produce, salad greens, herbs, honey, watermelons, peaches, farm-fresh eggs, meat items, cut flowers or quality Made in Oklahoma products, you must explore this seasonal, open-air market!

Midwest City, OK 73130
405-732-7677



102. McAlester Farmers Market

Located at Main & Choctaw in McAlester.

McAlester Farmers Market offers a wide array of fresh fruits & vegetables, along with plant materials. Whether you are looking for delicious produce, salad greens, herbs, honey, watermelons, peaches, farm-fresh eggs, meat items, cut flowers or quality Made in Oklahoma products, you must explore this seasonal, open-air market! Open May-November, 9 a.m.-2 p.m. Tuesday, Thursday & Saturday.

oces.okstate.edu/pittsburg/farmers-market

3 S. Main St.
McAlester, OK 74501
918-423-4120



106. Midwest City Farmers Market

Midwest City Farmers Market offers a wide array of fresh fruits & vegetables. Whether you are looking for delicious produce, salad greens, herbs, honey, watermelons, peaches, farm-fresh eggs, meat items, cut flowers or quality Made in Oklahoma products, you must explore this seasonal, open-air market! Open June-October, 8 a.m.-noon Saturday.

www.facebook.com/mwcfarmersmarket

9104 SE 15th St.
Midwest City, OK 73130
479-200-5541



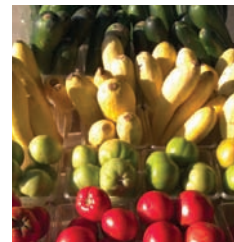
103. McLemore Pumpkin Farm

From OKC: Take exit 88 (Hydro/Carnegie) on Hwy. 58 & go S. 14 mi. to Hwy. 152. Turn W. & go 4 mi. to NS 244. Turn N. & go 1 mi. From Lawton: Go N. on I-44 to the Medicine Park exit 45; go W. on Hwy. 49 to the junction of Hwy. 58 & turn N. - you will drive through Carnegie. Go 13 mi. N. to Hwy. 152 & Turn W. Go 2 mi. to NS244. Turn N. & go 1 mi. From Cordell: Go 20 mi. E. on Hwy. 152. On NS244, turn N. & go 1 mi.

Live working farm offering a variety of farm animals, a maze & pick-your-own pumpkins. Call to set up a time to visit. Open Sept. 15-Oct. 31.

www.mclmorepumpkinfarm.com

Colony, OK 73021
405-929-7328



107. Muskogee Farmers Market

Located at 5th & Okmulgee, in front of the civic center.

Muskogee Farmers Market offers a wide array of fresh fruits & vegetables, along with plant materials. Whether you are looking for delicious produce, salad greens, herbs, honey, watermelons, peaches, farm-fresh eggs, meat items, cut flowers or quality Made in Oklahoma products, you must explore this seasonal, open-air market! Starting May 1, open 8 a.m.-1 p.m. Wednesday; starting April 20, open 8 a.m.-noon Saturday.

muskogeefarmersmarket.com

425 W. Okmulgee Ave.
Muskogee, OK 74401
918-348-4134





108. N40 Berries

From Stillwater: Go N. on Main/Washington (which becomes Hwy. 177) approx. 1.3 miles past the turnpike. Go L. on Glencoe Road 1 mi., then turn right on N. Western Road. Gate is at the top of the hill, approx. 0.25 mi. on the L.

Family-owned-and-operated U-pick farm with a clean, family-friendly atmosphere. This farm has 4 varieties of thornless blackberries that differ in taste, size & time of ripening. Located just minutes from Stillwater and the beautiful OSU campus. Picking buckets provided; both pre-picked & frozen berries are available on request. Check the website for days/hours of operation. Season usually runs from June to mid-July.

www.N40berries.com

8920 N. Western Road
Stillwater, OK 74075
405-385-9386



112. Nowata CAN Garden Market

Located across from Spike's Park.

A farmers market whose mission is to develop all avenues of agriculture in Nowata County, including vegetables, fruits, meats, eggs, honey, cut flowers, firewood, pumpkins, fall decor, value-added products & Oklahoma-related crafts. Offers monthly giveaways, classes & workshops, plus a monthly newsletter full of gardening tips, recipes, recycling ideas, crafts, homemaking tips, & sustainability & ag info for kids. Open 8 a.m.-noon Saturday May-October, 4-6 p.m. Wednesday June-July.

www.nowatacountyfarmersmarket.blogspot.com

Nowata, OK 74048
918-273-1500



109. Native Spirits Winery

Located approx. 12 mi. E. of I-35 exit 108 on Hwy. 9. Turn N. on 108th St., then go approx. 1 mi. & turn W. on E. Lindsey St. Winery is approx. 0.25 mi. on the S. side of the road.

Enjoy free tastings in a tasting room featuring Native American art, along with wine-related gift items. If you like, make your own batch of a favorite wine.

www.nativespiritswinery.com

10500 E. Lindsey St.
Norman, OK 73026
405-329-9942



113. Nowata Farmers Market

Located in the Orschem Farm & Home parking lot.

www.facebook.com/Nowata-Farmers-Market-132486320231963

329 S. Ash St.
Nowata, OK 74048
918-559-7090



110. Noble Farmers Market Inc.

S. on Hwy. 77 through downtown Noble. The market is on the W. side of Main St.

Noble Farmers Market offers a wide array of fresh fruits & vegetables, along with plant materials. Whether you are looking for delicious produce, salad greens, herbs, honey, watermelons, peaches, farm-fresh eggs, meat items, cut flowers or quality Made in Oklahoma products, you must explore this seasonal, open-air market!

304 S. Main St.
Noble, OK 73068
405-517-2533



114. Nuyaka Creek Winery

16 mi. E. of Bristow on Hwy. 16. Turn R. on 193rd W. Ave. Go S. 5 mi., E. 1 mi. & S. 1 mi. We are on the W. side of the road.

Vineyard nestled in a beautiful country setting amid native wild fruits. Offers variety of wines & unique specialty vintages. Hiking & walking trail on site, along with frequent wildlife sightings. Annual festivals held in May & September. Open noon-5 p.m. Thursday-Monday; open later in summer.

www.nuyakacreek.com

35230 S. 177th W. Ave.
Bristow, OK 74010
918-756-7568



111. Norman Farm Market

Take I-35 to Robinson St.; turn E. on Robinson & go 3.25 mi. to the corner of Finley & Robinson. Go 1 block E. to the stoplight. Turn N. into the Cleveland County Fairgrounds.

Indoor & outdoor farmers market – the oldest in the state – offers a wide array of fresh fruits & vegetables, along with plant materials. Offers delicious produce, salad greens, herbs, honey, watermelons, peaches, farm-fresh eggs, meat items, cut flowers & quality Made in Oklahoma products. Open April-October, 4-7 p.m. Wednesday & 8 a.m.-noon Saturday.

clevelandcountyfair.org/35/Farm-Market

615 E. Robinson St.
Norman, OK 73071
405-360-4721



115. Okmulgee Farmers Market

Located at the intersection of 6th & Morton.

Okmulgee Farmers Market is located under the magnificent shade trees on the W. lawn of the historic Creek Council House Museum in the heart of downtown Okmulgee. It has brought back to life an important business for the city that has been missing since 1926. Come meet the local farmers & market gardeners, & enjoy fresh foods every week. Open May-October, 8 a.m.-1 p.m. Tuesday & Friday.

100 W. Sixth St.
Okmulgee, OK 74447
918-659-9221







116. Orr Family Farm

From I-35: Take exit 116 (in Moore) & go W. to Western (approx. 2 mi.). Turn R. & go 0.5 mi. to the farm. From I-240: Take Western exit 2A; go S. past 134th St.

106-acre working horse farm offers children & visitors of all ages farm activities, including 2 trains, fishing ponds, a 1974 carousel, an animal barn, pumpkins in the fall, pony/hayrides, a maze, 2 giant jumping pillows, & zip lines. Concessions & group meals available. Call or view website for details.

www.orrfamilyfarm.com

14400 S. Western Ave.
OKC, OK 73170
405-799-3276



120. OU Medical Center Farmers Market

Offers a wide array of fresh fruits & vegetables along with plant materials. Whether you are looking for delicious produce, salad greens, herbs, honey, watermelons, peaches, farm fresh eggs, meat items, cut flowers or quality Made in Oklahoma products then you must explore this seasonal market.

1200 Children's Ave.
OKC, OK 73104
405-271-3932



117. OSDH Wellness Farmers Market

From Lincoln Blvd. in Oklahoma City: Go E. on NE 10th St. & turn R. into the health department's visitor parking garage. The market is held on the ground level of the parking garage.

OSDH Wellness Farmers Market offers a wide array of fresh fruits & vegetables, along with plant materials. Whether you are looking for delicious produce, salad greens, herbs, honey, watermelons, peaches, farm-fresh eggs, meat items, cut flowers or quality Made in Oklahoma products, you must explore this seasonal, open-air market! Open May-September, 11 a.m.-1 p.m. Thursday. www.ok.gov/health

1000 NE 10th St.
OKC, OK 73117
405-271-4171



121. Outback Farm

From Pryor: Go N. on Hwy. 69 to 470 Road & turn E. Go approx. 7 mi. From Claremore: Go E. on Hwy. 20 to 439 Road & turn N. Continue to 470 Road.

Outback Farm is a large blueberry farm located near Lake Hudson in NE Oklahoma. Pick your own or purchase pre-picked berries on the farm. Many varieties available. Open mid-May to mid-July, 6 a.m.-6 p.m. daily. Stay healthy, stay happy, eat REAL food. www.outbackfarm.org

4163 E. 470
Pryor, OK 74361
918-519-2148
918-519-7396
918-519-9235



118. OSU-OKC Farmers Market

Located at the OSU-OKC horticulture pavilion.

The OSU-OKC Farmers Market offers a wide array of fresh fruits & vegetables, along with plant materials. Offers delicious produce, salad greens, herbs, honey, watermelons, peaches, farm-fresh eggs, meat items, cut flowers & quality Made in Oklahoma products. Open May 15-October, 9 a.m.-1 p.m. Wednesday; April 6-October, 8 a.m.-1 p.m. Saturday; mid-October to mid-April, 10 a.m.-1 p.m. Saturday. www.osuokc.edu/farmersmarket

400 N. Portland Ave.
OKC, OK 73107
405-945-3326



122. Owasso Farmers Market

From Hwy. 169, turn W. on 76th St. N. At the 1st light (Owasso Expressway), turn N. (R.). We are just up the road, 3 blocks on the W. (L.) side of the street. Located at the YMCA.

Seasonal farmers market promoting food with a face, a place & a taste in the Owasso area. Open May-October, 8 a.m.-noon Wednesday & Saturday.

8300 N. Owasso
Expressway
Owasso, OK 74055
918-629-7223



119. Ottawa County Farmers Market

Located at All Saints' Episcopal Church.

The Ottawa County Farmers Market offers a wide array of fresh fruits & vegetables, along with plant materials. Whether you are looking for delicious produce, salad greens, herbs, honey, watermelons, peaches, farm-fresh eggs, meat items, cut flowers or quality Made in Oklahoma products, you must explore this seasonal, open-air market! Open May-October, 4-7 p.m. Thursday.

225 B St. NW
Miami, OK 74354
918-332-4365



123. Owasso Tree and Berry Farm

From Tulsa: Take Hwy. 169 N. to the 106th St. N. exit. Turn W. & go to first stop sign (at 129th E. Ave.). Turn R.; we're the first house on the R.

Choose & cut Virginia pine; pre-cut trees include noble fir, grand fir, Douglas fir, Fraser fir and Nordmann fir. We feature wreaths, greenery, a gift shop, hayrides, free hot cider for everyone & candy canes for the kids. U-pick blackberries available in season (usually June); pails & cartons provided. Call for details. www.owassochristmastreefarm.com

11039 N. 129th E. Ave.
Owasso, OK 74055
918-272-9445





124. P Bar Farms

Located on I-40 between Hydro & Weatherford. Use exit 84 if coming from the W., or exit 88 if coming from the E. Follow Route 66 (N. access road) for approx. 3 mi. Look for red barns & signs.

More than 100 acres of indoor/outdoor fun. Tour a 12-acre cornfield maze w/intricate twists & turns. Pumpkin patch open in the fall w/petting zoos & hayrides. Field trips welcome; group rates available. Open September-October, 5-10 p.m. Thursday-Friday, by appointment only Tuesday-Wednesday, 10 a.m.-10 p.m. Saturday; 2-6 p.m. Sunday.

www.pbarfarms.com

Hydro, OK 73048

405-556-1069



128. Pleasant Valley Farms

From Sand Springs: Go W. on 41st St. past Discoveryland to S. 209 W. Ave. Turn L., go 3.2 mi. to 71st St. & turn R. Go 0.6 mi.; the farm is on the L. side of the road.

Features Christmas trees, a pumpkin patch, a corn maze, tractor-pulled hay rides, miniature golf & a gift shop. Fall pumpkins & winter squash available in October, 9 a.m.-8 p.m. daily; Christmas trees available the day after Thanksgiving to Dec. 24, 9 a.m. to dark on weekends.

www.pleasantvalleyfarmsok.com

22350 W. 71st St. S.

Sand Springs, OK 74063

918-248-5647



125. Parkhurst Ranch

Located 8 mi. E. of I-35. Go E. Hwy. 66 to Hiwassee Road, then turn R. 1 mi. to 2nd/178th St. Turn L. & look for the big orange pumpkin sign.

Enjoy fall fun in the clean country air. Ride a pony, hold a bunny, feed a goat, play on the tire swing or the fort, & play games. Get lost in the corn maze or pick out a pumpkin. Don't forget the hayride! Groups & school tours welcome by appointment on weekdays. Open 1-6 p.m. Sunday & Thursday, 10 a.m.-8 p.m. Friday & Saturday.

www.parkhurst ranch.com

720 Henney Road

Arcadia, OK 73007

405-315-7392



129. Plymouth Valley Cellars

From Fairview: Go S. 6 mi. on Hwy. 58 to the junction of 58 & 51A; go 1 mi. E.

Vineyards & winery surrounded by the beauty of the rolling Gloss Mountains & colorful gypsum formations. The vineyards offer a variety of items, including premium Oklahoma grapes & wine, grape juices, made in Oklahoma products & more. Open daily from noon to dark.

www.plymouthvalleycellars.com

57442 S. CR 255

Fairview, OK 73737

580-227-3207



126. Peach Tree Farms

Roadside stand selling peaches, nectarines & blackberries fresh from on-location orchard. Taste peach ice cream & purchase other local produce, jams, jellies & salsas. Open June-August., 9 a.m.-6 p.m. Monday-Saturday.

6476 Oklahoma 3W

Ada, OK 74820

580-759-3784



130. Ponca City Farmers Market

Located at 14th & Highland at the Pioneer Woman Museum.

Ponca City Farmers Market offers a wide array of fresh fruits & vegetables, along with plant materials. Whether you are looking for delicious produce, salad greens, herbs, honey, watermelons, peaches, farm-fresh eggs, meat items, cut flowers or quality Made in Oklahoma products, you must explore this seasonal, open-air market! Open May-September, 4-6 p.m. Tuesday & 8-10:30 a.m. Saturday.

701 Monument Road

Ponca City, OK 74604

580-761-2665



127. Pecan Creek Winery

Take Hwy. 69 to Fern Mountain Road in Muskogee. Go W. 5.2 mi. The winery is on the R.

Winery and vineyard in Muskogee County featuring outstanding, locally grown and produced wines. Offers dry, semi-dry and floral wines from French-American hybrid varieties.

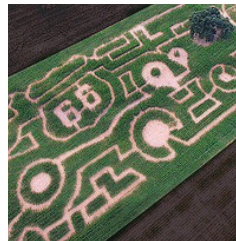
www.pecancreekwinery.com

8510 W. Fern

Mountain Road

Muskogee, OK 74401

918-683-1087



131. Pops Arcadia Corn Maze

From I-35, take Route 66 E. 5 mi.

Escape the hustle and bustle with just a short drive to family-friendly country fun! Experience fall at its best with our 10-acre custom-designed corn maze, pumpkin patch, hay fort, fishing, paintball and so much more! School & group tours by appointment on weekdays. Open October, 5-8 p.m. Friday, 10 a.m.-8 p.m. Saturday, noon-5 p.m. Sunday. Check Facebook for special days.

www.facebook.com/Arcadiacornmaze

660 W. Route 66

Arcadia, OK 73007

405-642-4522





132. Pottawatomie County Farmers Cooperative Market

In Shawnee: Located at Hwy. 177 and Hardesty Rd.

Pottawatomie County Farmers Cooperative Market offers a wide array of fresh fruits & vegetables, along with plant materials. Whether you are looking for delicious produce, salad greens, herbs, honey, watermelons, peaches, farm-fresh eggs, meat items, cut flowers or quality Made in Oklahoma products, you must explore this seasonal, open-air market! Open April-Oct., 8 a.m.-2 p.m. Wednesday & Saturday.

39908 Hardesty Road
Shawnee, OK 74801
405-275-3434



136. Put a Cork In It Winery

We are right on the canal in the historic Miller Jackson building, just W. of the Bricktown Ballpark.

At Put a Cork In It Winery, we produce a variety of handcrafted wines from the finest grapes & provide our customers friendly, courteous service for a fun & relaxed wine-tasting experience. Put a Cork In It has 2 events rooms, so book your next party or meeting at our winery. www.putacorkinitwinery.com

115 E. California Ave.
OKC, OK 73104
405-605-6656



133. Prairie Rattler Winery

Located on Hwy. 11, 0.5 mi. W. of Shidler, approx. 24 mi. E. of Ponca City.

Family-owned-and-operated winery specializing in producing small quantities of handcrafted traditional country wines. Unique labels depict landscapes & portraits of Osage County. Open 2-8 p.m. Wednesday-Saturday & by appointment. www.shidlerwinery.com

67 CR 4681
Shidler, OK 74652
918-285-1103
918-285-0878
918-793-7301

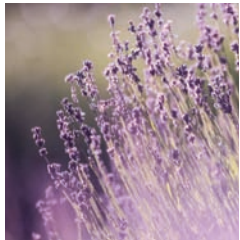


137. Red Barn Christmas Tree Farm

From McAlester: 6 mi. S. on Hwy. 69 to Savanna, turn E. at Savanna Schools on Jefferson (Brewer Rd.). Go 2.5 mi. on blacktop to Red Barn.

Choose & cut Virginia pine & white pine. Farm specializes in tall trees, machine-dug trees, wreaths, greenery, gifts, tree stands, ornaments & designer ribbons; gift shop available. Open Thanksgiving Day to Dec. 22: noon-5 p.m. Tuesday-Friday & Sunday, 10 a.m.-5 p.m. Saturday. www.okchristmastrees.com

2552 S. Brewer Road
Kiowa, OK 74553
918-548-3347



134. Prairie Wind Nursery

From Norman: Take Hwy. 9 E. to 72nd St., then go N. 1 mi. to Lindsey St. Turn E. on Lindsey & go 0.2 mi. to Goodman Lane.

Stop by Prairie Wind Nursery to pick your own field-grown lavender, rosemary, sage, oregano, thyme & other herbs. Seating areas are available to enjoy the quiet setting in the garden. Potted herbs and nursery plants also available for sale. www.prairiewindnursery.com

929 Goodman Lane
Norman, OK 73026
405-579-8846



138. Red River Pumpkin Patch

Take U.S. 183 S. of Davidson 0.5 mi., then go W. 0.25 mi. on CR EW 192.

Red River Pumpkin Patch is a farm-friendly environment for all ages. We have home-grown gourds & pumpkins just in time for fall. Bring your family to enjoy the fall outdoors. Feed and pet the goats, calves, chickens, horses, donkeys, sheep & guineas. We have plenty of games and play equipment for children and adults. Spend the day with us! www.facebook.com/redriverpumpkinpatch

21773 CR EW 192
Davidson, OK 73530
580-339-6315



135. Pumpkin Town

Take Hwy. 169 to 61st St. S. exit. Go E. on 61st for 0.5 mi. to S. Garnett. Turn L. onto Garnett; Pumpkin Town is on the W./L. side of the road.

We are a family business and have been providing pumpkins and fun family attractions to the Tulsa area for the past 15 years. During the week, we have a 5-acre maze, pumpkins & fall decor, plus 2 slides, a train, a pumpkin blaster, a jumping pillow, pony rides, face-painting & much more. www.pumpkintownok.com

6060 S. Garnett Road
Tulsa, OK 74146
918-638-4923



139. Red Silo Productions

Take Hwy. 81 to Choctaw Ave./9th St. Turn N. until the road dead-ends. Turn R. & go 1 block to farm entrance.

Red Silo Productions features a 38-acre maze that consists of three regular mazes, a haunted maze & a haunted hayride. Attractions include hayrides, corn & pumpkin cannons, farm animals, & an antique equipment display. Garden tractor pulls are scheduled every third Saturday of each month (& every Saturday during corn maze season). Local musicians play every Saturday night. Call ahead for hours. www.redsiloproductions.com

614 Reding Road
Chickasha, OK 73018
405-222-0624
405-532-9419
405-779-6643





140. Redbud Farm and Vineyard

From I-35, take exit 105 (Goldsby/Washington). Go 4 mi. S. to Redbud Road, then travel E. 1.5 mi.

Pick-your-own merlot, shiraz & riesling grapes. Custom poultry processing & farm-fresh products available in season. Spend time on the farm learning to raise poultry & sheep, prune grapes & grow produce. Call to set up your farm adventure!

www.redbudfarm.net

1692 E. Redbud Road
Washington, OK 73093
405-426-7070



144. Rock'n D Alpacas

Take I-35 to Waterloo exit & go W. to Sooner Road. Turn R./N. & go 3 mi. to Simpson. Turn L./W. for 1.8 mi. to Hunt Lane. Turn N./R. for 0.25 mi. Farm is on the E. side.

Rock'n D invites you to come see our beautiful suri alpacas. Feel the softness of their fleece & have them eating out of your hands. You will learn about the many advantages of raising alpacas, caring for them & the process of turning raw fleece into finished products, which are available for purchase. Please call to schedule a memorable visit.

www.rockcenterprises.com

11550 Hunt Lane
Guthrie, OK 73044
405-850-6533
405-651-1825



141. Redbud Ridge Vineyard & Winery

Located about 17 min. E. of I-35 exit 108, at the NE corner of the intersection of 72nd St. SE & Hwy. 9. Approx. 7 mi. E. of OU's Lloyd Noble Center.

Winery nestled in beautiful wooded setting. Our tasting room is an intimate setting, featuring local artists along with many wine-related items. Open 1-6 p.m. Thursday-Sunday; closed on holidays. Available at other times by appointment.

www.redbudridgewinery.com/

7301 E. Oklahoma 9,
Norman, OK 73026
405-321-9463



145. Rocky Top Winery

Take Hwy. 1 to Atwood, turn S. onto NS 375 Road & continue for 5 mi. Turn L./E. onto EW 1470 for 2 mi. Watch for Rocky Top Winery Road on the R. Turn R. and go to the end of the road. Drive around to the red winery.

Rocky Top Winery has a muscadine grape vineyard & a winery with a gift shop. The winery is built on a working cattle ranch & offers cabin & event facility rentals. Come taste the variety of wines and enjoy a day in the country.

www.rockytopwineryllc.com

7569 EW 148
Allen, OK 74825
580-421-5792
580-857-2869



142. Rejoice Farms LLC

From Hwy. 52 & Czech Hall Road in Mustang: take Czech Hall Road S. 3.2 miles. Farm is on the W. side of the road.

Rejoice Farms uses responsible growing practices to grow a variety of quality produce. Unique varieties of garlic, onions & tomatoes, as well as strawberries & blackberries, can be found at the farm. Produce is available pre-picked from the farm and at select farmers markets, but U-pick is also an option. Please call ahead if coming to the farm in order to ensure your produce is available.

12401 Czech Hall Road
Mustang, OK 73064
405-834-1191



146. Rose District Farmers Market

Exit Hwy. 51 at Elm exit. Take Elm S. to Kenosha. Go E. on Kenosha approx. 0.5 mi. to Main St., then turn S. on Main & go 0.75 mi. to the market.

The Rose District Farmers Market offers a wide array of fresh fruits & vegetables, along with plant materials. Whether you are looking for delicious produce, salad greens, herbs, honey, watermelons, peaches, farm-fresh eggs, meat items, cut flowers or quality Made in Oklahoma products, you must explore this seasonal, open-air market! Open April-September, 8 a.m.-noon. Saturday. www.brokenarrowok.gov/357/Farmers-Market-Rose-District

418 S. Main St.
Broken Arrow, OK 74012
918-451-2815



143. Rock Creek Farms

From Hwy. 97 & 41st St. in Sand Springs: Go 6 mi. W. to 209th W. Ave., then 2 mi. S. to 61st St. The farm is 0.5 mi. E. on the R. side of the road.

Rock Creek Farms is a U-pick blackberry farm located W. of Sand Springs.

rockcreekfarmsok.com

20412 W. 61 St. S.
Sand Springs, OK 74063
918-637-7243



147. Roses Inc. Green Country

Located off Washington, just E. of 91st & Main, in Broken Arrow.

With more than 5,000 rose bushes in stock, grown by hand in our greenhouse, Roses Inc. Green Country carries the largest variety of rose bushes in Oklahoma for both retail and wholesale. Along with designing and constructing some of Oklahoma's most widely discussed rose gardens, we also provide gardening services for those with roses, which need spraying, pruning and fertilizing.

www.rosesinc.com

500 E. Washington St.
Broken Arrow, OK 74012
918-455-7673





148. Ross Honey Company

The Ross Honey plant is a honey-processing facility with machines that uncap, extract & separate honey from beeswax. The honey is then stored in 55-gallon containers, brought into the hot room, & liquefied & filtered prior to bottling. Thousands come each year for the annual honey festival, held on the 1st Saturday in December! All visits are by appointment only.

109 NW Belle St.
Minco, OK 73059
405-352-4125



152. Santa's Forest Christmas Tree Farm

From I-35 N., take exit 214 & go 10.5 mi. E. on Hwy. 60/77. The farm sits on the S. side of the road.

Choose & cut Christmas tree farm featuring Virginia pine trees. Fresh, decorated wreaths & other craft items are available. Complimentary hot cocoa, coffee & cider are available for guests. Plan an outing for a family holiday experience.

www.santasforesttreefarm.net

6555 W. U.S. 60
Ponca City, OK 74601
580-716-4776



149. Rustic Acres

Located 1.5 mi. N. of Mason School off Hwy. 48, approx. 17 mi. N. of Okemah.

Farm features a corn maze, a pumpkin patch, fall family fun, a barrel train, hayrides, full concessions, cow milking, a petting area and a haunted maze after dark. Very educational for school groups; special group rates available. Call to make an appointment. Offers pumpkins & fall items for sale in October – come out & enjoy the cool fall weather! \$8 per person; ages 3 and under are free. Last Hayride goes at 5 p.m., and the last barrel ride goes at 5:30 pm.

www.rusticacres.net

Mason, OK 74859
918-623-3077



153. Seminole Farmers Market

From the intersection of Hwy. 9 & Hwy. 99, go S. 0.5 mi. W. to First United Methodist Church.

Seminole Farmers Market offers a wide array of fresh fruits & vegetables, along with plant materials. Whether you are looking for delicious produce, salad greens, herbs, honey, watermelons, peaches, farm-fresh eggs, meat items, cut flowers or quality Made in Oklahoma products, you must explore this seasonal, open-air market! Open June-October, 8 a.m.-noon Tuesday & Saturday.

www.oces.okstate.edu/seminole

910 Wrangler Blvd.
Seminole, OK 74868
405-683-9357



150. Sand Stone Spring Vineyard

In Mustang: From Morgan Road & 89th St., go 0.25 mi. E.

This vineyard lies on the outskirts of the Oklahoma City metro area and is one of the only vineyards in the state that offers U-pick harvest opportunities for several varieties of wine grapes.

www.facebook.com/sandycreekblackberryfarm

9540 SW 89th St.
Mustang, OK 73064
405-745-5836
405-830-8067



154. Seminole Nation Vineyard & Winery

From I-40, take Hwy. 99 S. for 10 mi. to Seminole. Take Hwy. 9 E. for 0.25 mi. We're on the N. side of the road.

Seminole Farmers Market offers a wide array of fresh fruits & vegetables, along with plant materials. Whether you are looking for delicious produce, salad greens, herbs, honey, watermelons, peaches, farm-fresh eggs, meat items, cut flowers or quality Made in Oklahoma products, you must explore this seasonal, open-air market! Open June-October, 8 a.m.-noon Tuesday & Saturday.

www.seminolenationwinery.com

612 E. Wrangler Blvd.
Seminole, OK 74868
405-683-1632



151. Sandy Creek Blackberry Farm

From the intersection of Hwy. 7 & Kirby Graves Road (W. of Sulphur): The farm is located 0.5 miles N. of the Murray County Expo Center. Look for the signs. The farm is on the L.

Sandy Creek Blackberry Farm is a family-owned-and-operated U-pick blackberry farm located in Sulphur.

www.facebook.com/sandycreekblackberryfarm

1000 Kirby Graves Road
Sulphur, OK 73086
580-504-1919



155. Shepherd's Cross Inc.

From Claremore, take Hwy. 66 N. 2.5 mi. from the last stoplight in town; note the sign for Shepherd's Cross. Turn R. on EW 45/ Akin Road & follow the trailblazer signs for Shepherd's Cross; proceed 2.5 mi. Shepherd's Cross is on the R.

Authentic working farm with educational & seasonal tours & events all year, including fiber arts demos/lessons, spinning, weaving & knitting. Events include Woolly Weekend, Gospel Singin' & Pickin', Fiber Fest, pumpkin festival, living nativity & pecan festival. Features a made in Oklahoma gift shop. Open 8:30 a.m.-5:30 p.m. Thursday-Saturday w/seasonal changes; check website or call first.

www.shepherdscross.com

16792 E. 450 Road
Claremore, OK 74017
918-342-5911





156. Silver Tine Farm Pumpkin Patch

Located 8 mi. W. of Cleveland off Hwy. 64. Turn S. at 35900 Road & take a L. at the T. The pumpkin patch will be on the L.

Silver Tine Farm offers a beautiful U-pick pumpkin farm east of Pawnee. The family-owned-and-operated farm invites you out for pumpkin picking & for fall decorations, such as straw and gourds. Special event packages are available upon request. Open 9 a.m.-dusk Saturday, 1 p.m.-dusk Sunday.

www.facebook.com/silvertinefarm

59051 E. 51 Road
Pawnee, OK 74058
918-519-6251



160. StableRidge Vineyards and Winery

Located 1 mi. W. of the Hwy. 99 junction on Route 66.

Vineyards & winery on historic Route 66 with tours, a tasting room housed in a historic 1902 church, & a gift shop. Oklahoma grapes are used to make the winery's award-winning wines. Admission is free; facilities are handicapped-accessible. Open 10 a.m.-5 p.m. Monday-Friday, 10 a.m.-6 p.m. Saturday, noon-5 p.m. Sunday.

www.stableridgevineyards.com

1916 W. Route 66
Stroud, OK 74079
800-359-3990
918-968-2568



157. Silvertop Farm & Vineyards

From I-35: Take the Hwy. 60 exit E. toward Ponca City. Take the Marland exit (Hwy. 156) & go S. 2.5 mi. Turn R. on Fountain Road & go 1.5 m. W.

Our farm is rooted in the principles of diversified agriculture & community service. Features 3,000-acre farm includes registered Shropshire & Hampshire sheep, small grain operations, (including wheat, soybeans, milo & hay), 2 farmhouses, 7 barns, chickens, cattle, & vintage farm equipment. Country stays available by private reservation only.

6151 W. Fountain Road
Ponca City, OK 74601
214-458-1340



161. Stillwater Farmers Market

Stillwater Farmers Market offers a wide array of fresh fruits & vegetables, along with baked goods, plants & more at 4 locations throughout the year – see our website for details. Open April 1- Aug. 30, 8 a.m.-1 p.m. Wednesday & Saturday (309 N. Main St.); November to March., 10 a.m.-1 p.m. Saturday (1118 W. Hall of Fame Ave.).

www.stillwaterfarmersmarket.com

Stillwater, OK 74075
918-520-8625



158. Sorghum Mill Christmas Tree and Blackberry Farm

From OKC: Go N. on I-35 to exit 143 (Covell Road). Turn E. on Covell Road & continue to Midwest Blvd. (approx. 1.5 mi.). Turn N. & go 1.75 mi. to Midwest Lane, then turn S. & continue 1 block. Turn E. into farm.

Choose & harvest Virginia pine, white pine, scotch pine, Colorado blue spruce, Norway spruce & dixie fir. A variety of pre-cut trees, greenery, free hot chocolate, cider, coffee, candy canes & cookies are also available. Blackberries available early June to mid-July. Hours are seasonal; call ahead for availability.

www.christmas-tree.com/real/ok/sorghum

7121 Midwest Lane
Edmond, OK 73034
405-340-5488



162. Stilwell Farmers Market

On Wednesdays, located at the Stilwell Public Library on the corner of Division & N. 6th.; on Saturdays, located at the corner of Hwy. 59 & Division.

Stilwell Farmers Market has many fresh fruits & vegetables, along with plant materials. Whether you are looking for delicious produce, salad greens, herbs, honey, watermelons, peaches, farm-fresh eggs, meat items, cut flowers or quality Made in Oklahoma products, you must explore this seasonal, open-air market! Open mid-April to October, 8 a.m.-noon Wednesday & Saturday.

5 N. 6th St.
Stilwell, OK 74960
918-315-4279



159. Sparks Vineyard & Winery

From I-40: Take exit 200 & go N. on Hwy. 99 approx. 14.6 mi., then turn L. at the sign. From I-44 exit 179 or Route 66: Go S. on Hwy. 99 approx. 9 mi. & turn R. at the sign.

Our 80-acre estate vineyard & winery grows 8 varieties of grapes & produces wine sold throughout the state, including the Deep Fork Red. The winery is surrounded by vineyard plots. Tour group services include a box lunch with advance reservation.

www.sparksvineyard.com

351310 E. 970 Road
Sparks, OK 74869
877-669-8893
918-866-2529



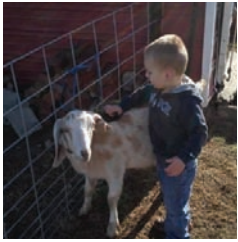
163. Stratford Pullen Peaches

From Stratford at the 4-way stop: go N. on Hwy. 177 for 3 mi. Turn L./W. and go 2/3 mi. It's the second house on the R. with a white fence & sign for Lazy P Farm.

Stratford peaches have always been known for their great taste. Stop by Pullen Peaches for some tasty goodness.

49617 E. CR 1500
Stratford, OK 74872
580-421-5152
580-759-3164





164. Straw Family Farm

From Coffeyville, Kansas: Take Hwy. 169 S. to Lenapah, Oklahoma. Turn R./W. on the gravel road marked EW 13. Drive W. for 0.5 mi. to the stop sign. Farm is on the L. at the SE corner of the intersection. From Tulsa: Take Hwy. 169 N. to Lenapah. Turn L./W. on the gravel road marked EW 13. Drive W. for 0.5 mi. to the stop sign. Farm is on the L. at the SE corner of the intersection.

The Straw Family Farm is a small working farm that makes use of livestock for many purposes. We have poultry for fresh eggs, goats for milk, as well as sheep & goats for their fleece & meat. Monday is milking day. Tuesday is Helping Hands day, where we focus on animal care. Fridays are all about fiber with free processing & spinning demonstrations. There are animals to pet at the farm daily. Winter hours are 9 a.m.- 5 p.m. Friday/Saturday/Monday, 1-5 p.m. Sunday; open Tuesday-Thursday by appointment only. www.farmontheprairie.com

HC 61, Box 16
Lenapah, OK 74042
918-640-4012



168. Sunshine Shelly's Pumpkin Patch

From I-40: Take exit 186 to Shawnee and Hwy. 18 to Meeker. Turn N.; the farm is 1.5 mi. N. of I-40 on the L./W. side of the road.

We have a U-pick 15-acre pumpkin patch with a hayride, corn maze, kiddie maze, corn pit, big trikes, bouncy houses, picnic tables & fire pits. See website for hours. www.sunshinshellys.com

7110 N. Harrison Ave.
Shawnee, OK 74804
405-401-1993
405-401-1994



165. Strebel Creek Vineyard

In OKC: Go 0.5 mi. S. of 122nd St. on MacArthur Blvd. Winery sits on the W. side of MacArthur.

We invite you to enjoy the ambiance of our patio by the creek with a sample of your favorite wine! Relax, visit & shop in our wine gift shop & observe the vineyard & tasting room. Open 1-5 p.m. Friday, 10 a.m.-5 p.m. Saturday, 2-5 p.m. Sunday. www.strebelcreek.com

11521 N. MacArthur Blvd.
OKC, OK 73162
405-720-7779



169. Swan Brothers Dairy Inc.

From I-44 Exit 255 (Claremore), turn L. after toll booth onto Hwy. 20 for 1 block, then turn R. on Maiden Lane.

Dairy farm with retail store offering milk & cheese products. Visitors can view milking of dairy cows 3-5 p.m. daily. Open 8 a.m.-6 p.m. Monday-Saturday. swandairy.com

938 E. Fifth St.
Claremore, OK 74017
918-341-2298



166. Sunday Market

Located at Fontana Shopping Center.

The Sunday Market in Tulsa offers many fresh fruits & vegetables, along with plant materials. Whether you are looking for delicious produce, salad greens, herbs, honey, watermelons, peaches, farm-fresh eggs, meat items, cut flowers or quality Made in Oklahoma products, you must explore this seasonal, open-air market! Open March-October, 9 a.m.-2 p.m. Sunday.

7837 E. 51st St.
Tulsa, OK 74145
918-260-3327



170. T.G. Farms

Newcastle location: From OKC, take I-44 W. to Hwy. 37 (exit 108). Go 1 mi. W. Location is on the S. side of Hwy. 37. Norman location: Take I-35 S. to Hwy. 9 (exit 106). Go 1.5 mi. W. The farm is on the N. side of Hwy. 9.

Greenhouse/nursery w/bedding plants, shrubs & produce. In summer, offers canned butters, jellies, preserves, salsas & pickled veggies. In fall, offers a pumpkin patch, corn maze, hay maze, large round-bale maze, hayrides & U-pick pumpkins. Features farm animals, a fish pond, a picnic area & concessions. Call for details. www.tgfarms.com

1580 NW Oklahoma 37
Newcastle, OK 73065
405-387-3276



167. Sunset Ridge Vineyard

From Lawton: Go E. on Hwy. 7 to Hwy. 81. Go N. 1.5 mi. to the tan & green Web Design building on the W. side of the road. Follow the gravel road to the vineyard entrance.

10 acres of French & American grapes on rolling hills, with 117 tranquil rows of vines on historic Chisholm Trail. Group tours welcome. All visits by appointment only.

2417 U.S. 81
Marlow, OK 73055
580-467-0700



171. Tahlequah Farmers Market

Located in Norris Park at Muskogee Ave. & Morgan Ave. near Northeastern State University.

Seasonal farmers market offering the best selection of local fruits & vegetables, baked goods, fresh herbs, grass-fed beef & more. Held at Norris Park, located on Muskogee Ave. between Morgan St. & Spring St. Open April-October, 8 a.m.-noon Saturday. www.tahlequahfarmersmarket.org

400 N. Muskogee Ave.
Tahlequah, OK 74464
918-207-7671





172. Talihina Farmers Market

Located at 1st & Dallas in downtown Talihina.

Offers fresh locally grown fruits & vegetables, handcrafted items from the farm, local goat milk & cheese. Open May-October, 8 a.m.-1 p.m. Wednesday & Saturday.

400 Second St.
Talihina, OK 74571
918-429-9925



176. The Menagerie – Bradt's Mammals and More, LLC

From Alva: Go 3 mi. W. on Hwy. 64. Farm is located on the N. side of the road between county roads 390 & 400.

The Menagerie is a hands-on, interactive petting zoo designed to provide entertainment & learning in a not-so-average farm atmosphere. Although you will see animals associated with your typical farm, you will also have the opportunity to pet & feed zebras, llamas, a camel & more! A hay maze is available in the fall! When you visit, you never know what new addition we'll have! Whether you're looking for a fun outing with the family, an educational field trip for your class or a birthday party destination, The Menagerie is the perfect place.

www.bradtsmenagerie.com

39755 U.S. 64
Alva, OK 73717
580-430-1269



173. The Berry Barn

From the intersection of Hwy. 97 & 51st St. in Sand Springs, travel W. 1.25 mi. Continue onto the gravel road for 0.25 mi. The farm is on the L.

We are a U-pick berry farm in Sand Springs. We offer blueberries, thornless blackberries, & hydroponically grown strawberries & vegetables.

www.facebook.com/SandSpringsBerryBarn

13602 W. 51 St. S.
Sand Springs, OK 74063
918-241-4363



177. The Nut House

Located 3 mi. E. of Catoosa on old Hwy. 66.

A fun place to shop for pecans & nuts of all types. Select gourmet foods, seasonings, candles, souvenirs & unique gifts. Delicious homemade fudge, cookies & a wide variety of candy-coated nuts, homemade jams & jellies are available. Now serving food daily. Open 10 a.m.-6 p.m. Monday-Saturday.

www.66nuts.com

26677 S. Oklahoma 66
Claremore, OK 74019
918-266-1604



174. The Busy Bee

Located on Hwy. 77, S. of Norman between Lexington & Noble.

Fresh, Oklahoma-grown produce during the spring & summer, plus a pumpkin patch with free admission every fall. Craft fair available every 3rd Saturday in October with handmade & American-made products. From May to July, 9 a.m.-6 p.m. Monday, Tuesday, Thursday & Friday; 9 a.m.-noon Saturday. From Late September to October, open 9 a.m.-6 p.m. daily.

www.thebusybeek.com

10005 U.S. 77
Lexington, OK 73051
405-872-9188
405-250-2045



178. The Patch in Edmond

From OKC: Take Hwy. 74 N. to 164th St. W. to MacArthur. Farm is on the corner of 164th and MacArthur.

Celebrate fall & visit our pumpkin patch! Located in Edmond at Silver Wind Farm & Event Center, The Patch will be open throughout October on weekends & select weekdays. Pick a pumpkin while enjoying horseback rides, farm animals, fall-themed food & other activities. You can also schedule a birthday party, group field trip or other special event at the farm any time of the year.

16315 N. MacArthur Blvd.
Edmond, OK 73013
405-888-1627
405-834-0411

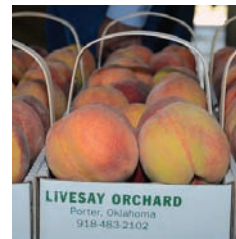


175. The Market at Guthrie Green

0.25 mi. W. of Shidler on the S. side of the rd.

The Market at Guthrie Green offers many fresh fruits & vegetables, along with plant materials. Whether you are looking for delicious produce, salad greens, herbs, honey, watermelons, peaches, farm-fresh eggs, meat items, cut flowers or quality Made in Oklahoma products, you must explore this seasonal, open-air market! Open April-October, 4-7 p.m. Thursday.

111 E. Brady St.
Tulsa, OK 74103
918-574-2421



179. The Peach Barn Orchard and Bakery

Located on the SW corner of Hwy. 51B & 69.

We offer homegrown peaches & a line of fruits, vegetables, bakery items, fried peach pies, peach ice cream, crafts & quilts. Open June-August, 9 a.m.-6 p.m. Monday-Saturday, noon-6 p.m. Sunday; September-October, 9 a.m.-6 p.m. Monday-Saturday; November to Christmas Eve, 9 a.m.-5 p.m. Monday-Saturday.

www.thepeachbarn.com

3557 W. Oklahoma 51B
Porter, OK 74454
918-686-0440





180. The Pumpkin Patch at Woodbine Farms

From I-35, take Veterans Blvd. exit 33 going W. (IHOP exit). Go 2 mi. W. to Kings Road. Go N. on Kings Road for 2.3 mi. & look for the signs.

Pumpkin patch offers hayrides, a huge sand pile, a hay maze, picnic tables, a petting zoo, picking your own pumpkin, a covered pavilion, bathroom facilities, ample parking & more on the weekend. Hours are seasonal; call ahead for availability.

www.woodbinefarms.net

5109 Kings Road
Ardmore, OK 73401
580-226-4052



184. Thunderbird Berries

Call for directions and availability.

Thunderbird Berries offers U-pick blueberries, blackberries, strawberries & raspberries, as well as farm-fresh eggs & honey. Open May-August; call ahead for availability. Picking times are 7 a.m.-noon Tuesday, Thursday & Saturday.



32100 E. 71st St. S.
Broken Arrow, OK 74014
918-640-7168
918-704-3438



181. The Range Vineyard and Winery

From Verden: Go 4 mi. W. on Hwy. 62; go 3 mi. S. on Turnpike Road. Sits on the E. side of the road. From Anadarko: Go 4 mi. E. on Hwy. 62; go 3 mi. S. on Turnpike Road. Sits on the E. side of the road.

Family-owned & operated vineyard & winery in SW Oklahoma. Features a tasting room, vineyard tours & pleasant country scenery.

www.therangewinery.com

36179 Turnpike Road
Anadarko, OK 73005
405-714-3976
405-714-4111



185. Tidewater Winery

From Drumright: Take Hwy. 16 S. 2 mi. The winery is right next to Joseph's Fine Foods on the W. side of the road.

With wine tasting and tours of the historic Tidal School, Tidewater Winery offers a relaxing visit to a historic building, listed on the National Register. Retail shopping is available, as well as lunches with advance notice. Art display features local artwork for viewing & purchase. Banquet room available for weddings. Hours vary by season. Check website for current hours.

www.tidewaterwinery.com



54560 W. Oklahoma 16
Drumright, OK 74030
918-352-4900
918-352-9606



182. The Rusty Nail Winery

From I-35: Take exit 55. Drive E. on Hwy. 7 through Davis & Sulphur. Turn L. on W. 3rd St., just past City Hall & the public library. The Rusty Nail is at the NE corner of Muskogee & W. 3rd St.

Tasting room & winery in a restored pre-statehood building. Eat lunch in the bistro, buy wine to take home & browse the gift shop. Ideal venue for reunions, meetings & private receptions. Call or email for info or to make reservations. Open noon-8 p.m. Tuesday-Saturday.

www.rustynailwinery.com

218 W. Muskogee Ave.
Sulphur, OK 73086
580-622-8466



186. Tourist Center Market

Located at the SW corner of the intersection of Hwy. 69 & 51.

Vegetables & melons available in season at the Fort Gibson Lake Association Tourism Center. Open May-October, 7:30 a.m.-noon Thursday-Saturday.



300 S. Dewey Ave.
Wagoner, OK 74467
918-485-4623



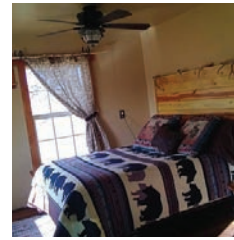
183. Three Fruits and a Veggie Family Farm

Take Hwy. 412 to Exit 209, W. of Sand Springs. You will exit at 209th W. Ave., the Prue exit. Turn N. for 14 mi. You will pass the road for Prue. When you see the blue-lettered Lakeshore Heights sign, turn L./W. onto CR 1575. Go a little over 1 mi. & take the first R. onto CR 1577. Follow the curve for about 1 mi. & look for a black mailbox with "549" on it. Just past the mailbox, turn R. into the driveway & follow it to the buildings.

Three Fruits and a Veggie Farm is a family effort & the land is certified organic. The farm has three focuses: community, sustainability & health. The farm currently has vegetable garden plots, seed-saving process & a water-catchment system; in the future, we will have a commercial kitchen & event barn for activities.

www.threefruitsandaveggie.com

549 CR 1577
Osage, OK 74054
918-242-3158



187. Tres Lagunas Ranch

Take Hwy. 62 6 mi. E. of Meeker or 6 mi. W. of Prague. Turn S. on County Road 3490. The farm is 0.75 mi. down the road on the R. Look for the white gate.

Comfortable, fully furnished cabin on a 160-acre working ranch. Cabin sleeps 4. Bring your horses & ride, or schedule a tour to see livestock & wildlife, including the exotic deer park. Activities include fishing, campfires, cookouts, U-pick fruit & pecans in season, hayrides, & trails for riding, biking or hiking.

www.facebook.com/Tres-Lagunas-Ranch-945843842128454



104789 S. 3490 CR
Prague, OK 74864
405-567-0159
405-416-0045



188. Tres Sueños Winery and Vineyards

From I-35, go 14 mi. E. on Route 66 to Luther Road. Go 6 mi. N. on Luther Road to Charter Oak Road, then 1 mi. E. to the winery.

Winery offers a spacious deck overlooking vineyards in 80 acres of cross-timbered area. Features a tasting room, guided tours, free tastings, a 4,000-sq.-ft. event center surrounded by pine forest, stream & waterfall for weddings & other events throughout the year. See website for details.

www.tressuenos.com

19691 E. Charter Oak Road
Luther, OK 73054
405-277-7089



192. Valley View Pecan Company

Take the Earlsboro exit on I-40; located 3 mi. S. of the interstate on the W. side of the road.

Valley View specializes in shelled native & papershell pecans. The retail store also offers a variety of pecan & nut products, including dipped & spiced pecans as well as brittle & fudge. Group tours available during the summer months.

www.valleyviewpecans.com

15704 Valley View Road
Shawnee, OK 74801
405-273-0106
800-842-9411



189. Tuttle Farmers Market

Located downtown.

Tuttle Farmers Market offers a wide array of fresh fruits & vegetables, along with plant materials. Whether you are looking for delicious produce, salad greens, herbs, honey, watermelons, peaches, farm-fresh eggs, meat items, cut flowers or quality Made in Oklahoma products, you must explore this seasonal, open-air market! Open May-August, 7:30-11 a.m. Saturday.

501 W. Main St.
Tuttle, OK 73089
405-381-2335



193. Valliant Farmers Market

Located on Hwy. 70 W. at the railroad track.

Valliant Farmers Market offers a wide array of fresh fruits & vegetables, along with plant materials. Whether you are looking for delicious produce, salad greens, herbs, honey, watermelons, peaches, farm-fresh eggs, meat items, cut flowers or quality Made in Oklahoma products, you must explore this seasonal, open-air market! Open June-August, 9 a.m.-5 p.m. Monday-Saturday.

912 E. Wilson St.
Valliant, OK 74764



190. Uncle Buck's Berries

Located approx. 7.5 mi. N. of Henryetta on Hwy. 75. From the intersection of Hwy. 75 and Lavender St., go 0.9 mi. E. The farm will be on the R.

Uncle Buck's Berries is an organic U-pick blackberry & blueberry farm. This pick-your-own farm has close to 7,000 plants located on 5 1/2 acres. Open May-July, 7 a.m.-noon on Tuesday, Thursday & Saturday. Call ahead for availability.

www.facebook.com/unclebuckberries

14626 E. Lavender St.
Schulter, OK 74460
918-319-1307



194. Vojai's Winery

From Broken Bow, take Hwy. 259 9 mi. N. Winery is on the W. side of the road.

Vojai's Winery is located just outside the Ouachita National Forest in Broken Bow. A relaxed yet sophisticated atmosphere allows visitors to experience Vojai's Winery in style. Taste the large selection of wines from the tasting room, then relax around the fire on the patio in fall & winter, or enjoy a cool forest breeze in the spring & summer. In summer, open noon-8 p.m. Monday-Saturday; in winter, open noon-6 p.m. Tuesday-Saturday.

www.vojaiswinery.com

9983 U.S. 259
Broken Bow, OK 74728
580-494-7687



191. Urban Wineworks

Urban Wineworks is a full-production Oklahoma winery located in the heart of downtown McAlester. Urban Wineworks is not only noted for what is poured in the glass – we also take pride in what goes on the plate. Each wine label shows fun & unique pairings.

www.facebook.com/urbanwineworks

115 E. Choctaw Road
McAlester, OK 74501
405-525-9463



195. W6 Pines Christmas Tree Farm

From NE 10th St. & Choctaw Road., go 1/2 mile E., then 1/2 mile S.

W6 Pines Christmas Tree Farm is a choose & cut farm offering Virginia pine, scotch pine, container-grown Leyland cypress & wreaths. Open the day after Thanksgiving until Christmas Eve; hours are 3-6 p.m. Monday-Friday, 9 a.m.-6 p.m. Saturday, 1-4 p.m. Sunday.

15600 Kent Drive
Choctaw, OK 73020
405-390-8635
405-812-3751





196. Waddell Vineyards

In Ada: Take Main St. E. until it dead-ends at Mississippi. Turn L./N. & go to Lonnie Abbott Blvd., then turn R. Go approx. 1 mi. and turn L./N. at 4-way stop (Lonnie Abbott & Country Club). Go N. on Country Club for 1.8 mi. Winery is on the L./W. Look for sign that says "grapes."

Waddell Vineyards is perfect for relaxing in the country with a glass of wine. The vines were planted in 2007, & now Robert & Debbie invite you to taste the wines they have created. See the tasting room & gift shop in Ada. Winery & vineyard tours are available. Waddell Vineyards is also a country wedding destination. Open 1-5 p.m. Thursday-Sunday, & by appointment Monday-Wednesday.
www.waddellvineyards.com

11533 CR 3570
Ada, OK 74820
580-421-6933



200. West Side Farmers Market

Located at the intersection of 25th & Southwest.

West Side Farmers Market offers a wide array of fresh fruits & vegetables, along with plant materials. Whether you are looking for delicious produce, salad greens, herbs, honey, watermelons, peaches, farm-fresh eggs, meat items, cut flowers or quality Made in Oklahoma products, you must explore this seasonal, open-air market! Open May-October, 2-7 p.m. Thursday.
www.redforkmainstreet.org

Tulsa, OK 74157
918-445-4457



197. Wakefield Country Inn and Winery

Travel 9 mi. S. of Calvin on Hwy. 75, then 3 mi. E. Located 30 mi. E. of Ada, 30 mi. W. of McAlester.

Inn, vineyards & winery feature a swimming pool, hydrotherapy spa, relaxing massage & wine tastings. Five-course dinners are available. The inn features 3 individually decorated guest rooms, a 2-acre fishing pond, skeet shooting & an exercise/fitness room. Call for reservations.

www.wakefieldwinery.com

8297 Diagonal
1500 Road
Gerty, OK 74570
580-513-0876
580-513-0707



201. Whirlwind Winery

Winery produces Made in Oklahoma products and artisan wines using grapes & fruits grown locally. Open 1-6 p.m. Friday, noon-6 p.m. Saturday or by appointment.

www.facebook.com/whirlwindwinery

109 E. Main St.
Watonga, OK 73772
580-623-1012



198. Waterfall Creek Pecan Farm

Located 7.5 mi. S. of Idabel on Hwy. 259.

Waterfall Creek Pecan Farm offers pecan sales as whole, cracked or shelled meats in the farm's retail shop. Visit the unique farm shop to sample pecans, fudge & other goodies. Retail, wholesale & mail orders available. Open 9 a.m.-6 p.m. daily.

www.pecanscook.com

185 Flagstone
Valley Loop
Idabel, OK 74745
580-286-6327



202. Whispering Meadows Vineyards and Winery

Boutique-style winery set in the former Newton Jewelry Store, built in 1901 w/curved glass windows. The winery features exclusive wines, cheeses, gourmet food items & home decor. Open 10 a.m.-7 p.m. Tuesday-Saturday.

www.whisperingmeadowswine.com

34 E. Choctaw Ave.
McAlester, OK 74501
918-423-9463



199. Weatherford Farmers Market

Located at the corner of Indiana & Huber.

Weatherford Farmers Market presents a small-town community atmosphere on Route 66 with homegrown produce from local farmers. Meet the growers, participate in special venues, experience an "old-time" market in the park & take home luscious forgotten flavors! Open June-October, 8 a.m.-noon Saturday, 4-7 p.m. Tuesday (during peak season).

www.facebook.com/WeatherfordOklahomaFarmersMarket

118 N. Kansas St.
Weatherford, OK 73096
580-819-0324



203. Whispering Vines Vineyards and Winery

Go 1.5 mi. W. on 51st St. from the I-44 & I-244 interchange before the Turner Turnpike entrance; or, from Hwy. 97, go 4 mi. E. on 51st St.

Vineyards & winery includes a tasting room, gift shop & processing room doubling as event center. Offers more than 13 award-winning wines, most produced from grapes grown at the winery's vineyards. Open 11 a.m.-6 p.m. Tuesday-Friday, noon-6 p.m. Saturday, by appointment Sunday.

www.whisperingvines.net

7374 W. 51st St.
Tulsa, OK 74107
918-231-7928
918-447-0808





204. Wichita Buffalo Company at Sandy Springs Farms LLC

From OKC: Go W. on I-40 to exit 104. Go S. 7 mi., then turn E. & go 1.3 mi. The ranch is on the N. side of the highway.

Interesting & educational tours of farms, buffalo herds & management operations. Topics range from buffalo temperament to cooking buffalo meat. Guests can take a tour, see bison on the open rolling prairie & buy buffalo meat from the ranch. Open by appointment.

www.sandyspringsfarms.com

28580 Oklahoma 37

Hinton, OK 73047

405-850-4156

405-820-3651



208. Wilkinson's Christmas Forest

From Tahlequah: Take Hwy. 82 N. 8 mi. Look for our sign L. of the highway. Turn L. into our driveway at the top of the hill after our sign. From Locust Grove: Take Hwy. 82 S. 16 miles from the intersection of Hwy. 82 and the Cherokee Turnpike (U.S. 412). Look for our sign on the R. Turn R. into our drive at the top of the hill after our sign.

Wilkinson Christmas Forest is located just N. of Tahlequah on Oklahoma 82. We have been growing & selling Christmas trees for 15 years. We truly love seeing families continue (or start) their family tradition of personally harvesting their Christmas tree. We look forward to seeing old friends & making new ones each Christmas season. Please come out & visit us before you choose a pre-cut tree from a local store. We guarantee that our trees are fresher – they aren't cut down until you choose the right tree for your REAL Christmas celebration.

12601 Oklahoma 82

Tahlequah, OK 74464

918-458-7936



205. Wild Rose Strawberry Farm

From Adair: At the intersection of Hwy. 69 & Hwy. 28, turn L./W. at the stoplight. Drive 7 mi. Turn L./S. onto 429 Road & go 1.5 mi. to the farm on the right.

We are a family-based U-pick & pre-pick strawberry farm. You're welcome to call ahead – we'll have fresh-picked strawberries ready for you! Open Monday-Saturday from 7 a.m. until we sell out of produce. Call ahead to check availability of strawberries. We want our customers to have a pleasant experience while visiting us!

www.wildrosetstrawberryfarm.com

7645 N. 429 Road

Adair, OK 74330

918-785-2212



209. Wind Drift Orchards

Wind Drift East is a half-mile E. of Luther Road on the S. side of NE 63rd St. Wind Drift West is a half-mile W. of Luther Road on the N. side of NE 50th St.

Wind Drift Orchards has 2 peach & nectarine orchards located within 2 mi. of each other in Harrah. Combined, we have nearly 14,000 trees producing 39 varieties of peaches & 6 varieties of nectarines. We provide bags or boxes for your U-pick convenience. Pre-picked & frozen peaches are also available. Feel free to bring a camera & take advantage of our beautiful orchard setting. Peaches should be available to pick from mid-June to early September at both locations. Hours change with availability of fruit, so please call ahead or check our Facebook page for the most current information.

www.winddriftorchards.com

18499 NE 50th St.

Harrah, OK 73045

405-454-6618

405-454-6601



206. Wild Things Farm

Park-like setting on 90 acres offers two ponds, a large pavilion for group activities, U-pick fruits & vegetables, a seasonal corn maze, a pumpkin patch & Easter egg hunts. Check the website for fruit & vegetable ripening calendar, details, & hours.

www.wildthingsfarm.com

700 Beaty Ave.

Pocola, OK 74902

918-626-4053



210. Woodland Park Vineyards

From OKC: Take I-35 N. Take exit 174 E. to Hwy. 51. Continue E. for 17 mi., then turn L. on Jardot Road. Woodland Park Vineyards is 2.5 mi. ahead on the R. From Tulsa: Take the Perkins Road exit from Cimarron Turnpike. Drive 3 mi. S., then turn L. & head E. on Airport Road for 1 mi. Turn R. on Jardot Road & go 0.5 mi. Woodland Park Vineyards will be on your L.

Family-owned winery dedicated to handcrafting small quantities of fine wines. We feature more than 8 acres of wine grapes, 2 acres of blackberries, elderberries, & apple, plum & pear orchards. Tasting room, tours, antique rose & herb gardens, woodland trails, picnic areas & art gallery available. Open 2-6 p.m. Thursday-Friday, 11 a.m.-6 p.m. Saturday.

www.woodlandparkvineyards.com

3023 N. Jardot Road

Stillwater, OK 74075

405-743-2442



207. Wildhorse Gardens and Market

Wildhorse Gardens & Market offers a wide array of fresh fruits & vegetables, along with plant materials. If you are looking for delicious produce, salad greens, herbs, honey, watermelons, peaches, farm-fresh eggs, meat items, cut flowers or quality Made in Oklahoma products, you must explore this seasonal, open-air market! Open May-August, 8-11 a.m. Saturday, 6-8 p.m. Wednesday.

www.wildhorsegardensandmarket.org

1201 N. Mustang Road

Mustang, OK 73064

405-818-4721





211. Woods and Waters Winery and Vineyard

Call for directions.

Caddo County's first & largest commercial winery was established in 1998 in the beautiful surroundings of a 600-acre ranch consisting of rolling hills, trees & ponds. The local climate & geographic location are ideal for the production of true vinifera wine grapes. Enjoy a delicious bistro lunch or shopping in the gift shop. Open 1-6 p.m. Monday-Thursday, 1-9 p.m. Friday, 11 a.m.-9 p.m. Saturday, noon-6 p.m. Sunday. The winery bistro is open Saturdays ONLY, 11 a.m.-3 p.m.

www.woodsandwaterswinery.com

17153 CR 1380
Anadarko, OK 73005
405-247-3000



212. Woodward Farmers Market

Located at 13th & Locust in Woodward.

Woodward Farmers Market offers a wide array of fresh fruits & vegetables, along with plant materials. If you are looking for delicious produce, salad greens, herbs, honey, watermelons, peaches, farm-fresh eggs, meat items, cut flowers or quality Made in Oklahoma products, you must explore this seasonal, open-air market! Open March-December, 7:30 a.m.-noon Saturday.

www.woodwardfarmersmarket.com

Woodward, OK 73801
580-256-4594



213. Yippee Ay-O-K

From I-40, go N. 0.3 mi. on Hwy. 183. Turn R. on Locust St. Go 1 block & Turn L. on 3rd St.

Chris & Donna Gillen established Yippee Ay-O-K in February 2010 & opened their tasting room to the public in June 2011. All of their wines are made from grapes they grow in Western Oklahoma, or from grapes grown by others in the area. The terroir (tear-wah) is the natural environment where grapes are grown; it is the soil, the lie of the land – its topography – & the effects each of these have on the other. The Gillens believe the Western Oklahoma terroir is great for winemaking & are committed to only offering wines from this area. They are Oklahoma proud & support local growers & the farm-to-table concept. Call for special tastings.

www.yippeeayok.com

420 S. Third St.
Clinton, OK 73601
580-515-8214



214. Zena Suri Alpacas

From Route 59 Between Grove & Jay, Follow Route 127 W. almost 5 mi. Turn N. on 580 Road. Ranch is the 3rd property on the L. Enter at Zena Suri sign.

Nestled on 78 rolling acres, this alpaca ranch features the soft, gentle Suri alpaca. Watch alpacas roam, touch their fleece, & help feed & care for them. Learn about fleece prep, carding & spinning. Family visits, tours & school field trips welcome. Gift shop offers yarn & clothing. Call for an appointment.

www.zenasurialpacas.com

35401 S. 580 Road
Jay, OK 74346
804-389-2579



