



THE SPUR OF

THE MOMENT

With nearly 40 attractions spread across the state, you can act on your impulse to unplug and get away from the urban hustle and bustle.



COUNTRY STAYS

COUNTRY STAYS

Slow down and put your feet up in country-inspired bliss at any one of our rural Oklahoma getaways where fresh air, natural beauty and Western recreation await.

SWEEP THE

PLAINS

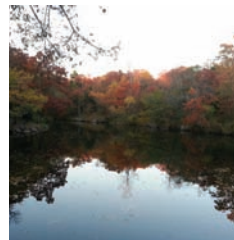
Discover your country-stay adventure using this handy reference.

- Find attractions near you on the fold-out map in the back.
- Read descriptions of attractions, listed alphabetically.
- The map and descriptions use a corresponding number system for cross-referencing.
- Plan your trip at OklahomaAgritourism.com. While you're there, sign up for our newsletter and connect with us on Facebook.
- Visit our blog, the Agritourist, to find cool links, articles about local attractions and more Oklahoma Agritourism insider info.

WEDDINGS



Finding the perfect venue for your wedding is easier than ever – visit OklahomaAgritourism.com, select “activities” and click on the “weddings” icon for romantic indoor and outdoor settings, chapels, country vistas and more.



1. A Savannah's Lodge, Inn & Cabins, Bed & Breakfast

Located just S. of Hwy. 412 E., near N. 289th Ave. in Catoosa.

Two cabins overlooking the creek w/Jacuzzis and wood floors. Shared kitchen/sitting area between cabins w/refrigerator, microwave, dishes & linens. Lodge inn w/honeymoon suite, fireplace, Jacuzzi, private entrance & patio. Activities: fishing, bird watching; avail. for weddings, receptions & guided tours.
www.asavannahslodge.com

28710 E. Admiral Place
Catoosa, OK 74015
918-694-5665



2. A to Z Guest Ranch

Located approx. 1 mi. W. off Hwy. 259 between Big Cedar & Octavia. Watch for signs.

Creeks, lush pine forests & abundance of wildlife with more than 150 mi. of trails for hikers, ATVs & horseback riders. Rental horses avail., or bring your own. 27 RV sites with hookups, 2 dump stations. Chef-prepared meals avail. for cabin/camping guests. Cabins avail. w/fireplace & satellite TV.
www.atozgustranch.com

64599 Ashby Road
Smithville, OK 74957
580-244-3729



3. Absolute Country

Take I-35 to Davis/Sulphur, Exit 55. Go W. on Hwy. 7 for 10.2 mi. toward Duncan/Hennepin. Just past the Hennepin sign, there is a road that bears right. (It is after the Volunteer Fire Department sign & between 2 stop signs). Take that road one block to the Pentecostal church. Take a R. at the church and go 2.5 mi. You will see the entrance to Flyin' D Ranch. Turn L. and stay to the L. You will pass the main house on the R. Continue up the gravel road & you will see the cabin.

Get away to a rustic cabin w/amenities. Activities: Pet horses, llamas or goats; catch & release fishing in pond; fire pit for grilling.

www.absolutecountry.net

Elmore City, OK 73433
580-369-5591
580-369-8234



4. Allie B Country Getaway

From Ringling: Take Hwy. 70 W. for 4 mi. After crossing 3 bridges turn S. on Rose Blvd. Turn L. at the 2nd entrance (Wilborn Drive.) Follow the driveway to the cabin.

Explore more than 1,200 acres w/camping-trip feel & all the comforts of home, plus hiking, bird- & wildlife-watching, fishing, or simply enjoying the quiet of the country. Furnished cabin features a kitchenette, washer/dryer, TV/ DVD & sleeping arrangements for up to six.

www.alliebcountrygetaway.homestead.com

Ringling, OK 73456
580-465-7558





5. Angel's Way Guest Ranch

From I-35, go 14 mi. E. on Hwy. 66 to Luther Road. Turn L. Go 3.2 mi. N. to sign. The cabin sets on the W. side of Luther Road. From I-44, take Wellston Exit 157 & go W. on Hwy. 66. Turn R. on Luther Road & go 3.5 mi.

Enjoy Old West & Native American culture in 3-story log home w/gourmet meals & horseback riding included; full bed & breakfast; all groups are welcome, including outdoor weddings up to approx. 75 people. The cabin can accommodate up to 12.

23611 N. Luther Road
Luther, OK 73054
405-277-7782



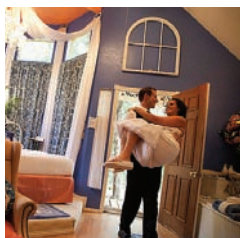
9. Black Mesa Bed & Breakfast

Call for driving directions.

Near the base of magnificent Black Mesa, our 1910 native-rock ranch house is center of working cattle ranch w/double-occupancy room & second-story suite that sleeps 8, plus a 2-room bunkhouse w/bathhouse. Home cooking for all guests. Activities include hiking, rock-hounding, fishing, hunting & bird-watching.

www.bmbb1.com

Kenton, OK 73946
800-821-7204



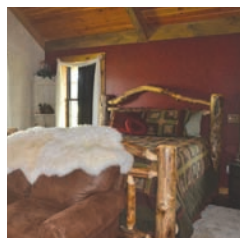
6. Arcadian Getaways

We are two miles from Seward Road and I-35.

Luxury honeymoon cottages featuring romantic accommodations for couples. Enjoy private guest cottages with full king-size beds, European spa showers, double Jacuzzi tubs in each cottage, gas fireplaces, TV/DVD & CD stereos, and full kitchens. Breakfast is already prepared and in your refrigerator. Each cottage has a private screened porch with hot tub and sauna. Gift certificates available. Reservations required.

www.arcadianinn.com

2600 E. Camp Drive
Guthrie, OK 73044
405-201-1632



10. Buffalo Creek Guest Ranch

From Talihina: Go W. 8 mi. on Hwy. 1, then S. 2 mi. on County Road 1080. From McAlester: E. 40 mi. on Hwy. 1 to Buffalo Valley School, E. another 1.5 mi. to County Road 1060, then S. 1 mi. on County Road 1060 to County Road 235. Go E. 1 mi. on County Road 235.

Our ranch, nestled in the mountains of beautiful southeast Oklahoma, offers a unique blend of outdoor adventure & authentic ranch experience, but with a comfortable and cozy bed & breakfast environment. The ranch is an all-inclusive retreat designed to allow you to relax, have fun and let your stress evaporate into the fresh mountain air. It's also a favorite among brides-to-be with a flair for country style.

www.buffalocreekguestranch.com

6832 SE 235th Road
Talihina, OK 74571
877-527-4207



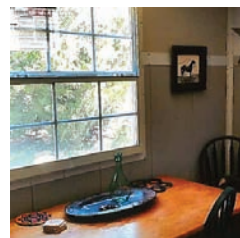
7. Aunt Jan's Cozy Cabin

I-40 E. until first Sallisaw exit. Turn R. on Hwy. 59 S. Go approx. 12-13 mi. until junction of Hwy. 9 & 59. Turn L., go 6 mi. E. - will intersect with Hwy. 271 & 59 at 4-way stop. (Large truck stop on right.) Turn R. Go S. on Hwy. 271 and 59, approx. 2.5 mi. Look for sign. Turn R. on Nubbin Ridge, going 0.5 miles; the house & cabin are on the R.

Log cabin located on 110-acre cattle ranch; hike wooded ridges, fish, go bird-watching, or relax in private hot tub or on porch swing. Cabin is handicapped-accessible & has equipped kitchen, TV w/VCR/DVD/CD player, movie library, fireplace & outdoor grill. Country breakfast included.

www.bbonline.com/ok/cozycabin

24662 Nubbin Ridge
Spiro, OK 74959
918-962-2380
800-470-3481



11. Cabin at the Canyon

Take I-40 exit 115 W. of El Reno. Head N. 1/8 mi. to Route 66. Turn L. (W.) on Route 66 and go 3.5 mi. until you see a red farm gate on the S. side of the road. There will be a white mailbox with a key to the gate. Close the gate and follow the road past the cattle pens and barn to arrive at the cabin.

This cabin is newly decorated & complete with a large living room area, small office, kitchen (with supplies) & a Western-style dining room & two lofts, complete with either one queen bed or two twin beds. Friendly cattle and horses roam about the property. This generator-powered cabin, surrounded by 160 wooded acres and a canyon lake, is perfect for those who love the peace and fun of the outdoors.

www.billandclaras.com

El Reno, OK 73036
405-262-6656
405-650-6651



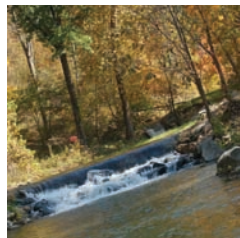
8. Bill & Clara's Home and Ranch

From I-40, take Country Club Exit 123. Go S. 2.3 mi. The blacktop road will curve to the W.; the B&B is on the S. side of the road. Enter through the gated entrance.

Private 1950s 3-bedroom country home surrounded by fields with cattle, horses, barns & silo. Home includes basement with game tables, TV & more; guests also can stay in a secluded mobile home near the S. Canadian River. Activities: trails, fishing, paddleboats, canoes, horseback riding/boarding.

www.billandclaras.com

2701 W. 10th St.
El Reno, OK 73036
405-262-6656
405-650-6651



12. Chimney Rock Hollow

Off Hwy. 412, take the Hwy. 82/Locust Grove exit. Go. 1.5 mi. E. Turn R. and go another 3.2 mi. to Chimney Rock reservoir. Stay on 523 for 0.9 mi. to the gate on the left (two white planters by the gate). If you reach S. 4451, you have gone 0.6 mi. too far.

320 acres for hiking, fishing & relaxing. Freshwater stream stocked for fishing. Two cabins. B&B-style breakfast, or cook for yourself in fully equipped kitchen.

www.chimneyrockhollow.com

3279 E. 523 Road
Salina, OK 74365
918-261-1028



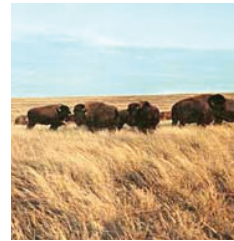


13. Chisholm Trail Bed & Breakfast

From Minco: Go 1.5 mi. S. to CR 1190; Turn right & go 1.5 mi.

This lovely family-operated home offers 3 suites where guests can enjoy a comfortable stay & hearty breakfast of home-cooked, home-grown foods served when you want them. Central to many attractions, it is the perfect getaway! Enjoy walking, jogging, fishing, bringing your own horses to ride, swimming in our large pool, or just relaxing & enjoying the beautiful landscape. This is the perfect place to schedule a club meeting or have a retreat!

3366 SW Clayton Road
Minco, OK 73059
405-352-4994
405-642-3760



17. Flying W Guest Ranch

Take I-40 to Exit 34. Take Merritt Road to the stop sign at Route 66., then turn L. & go 0.25 mi. to the junction of Hwy. 66 & 6 N. Turn R. & go W. on Hwy. 6 N. Go 5 mi. to Road BK26, then turn R. & go 2.5 mi. N. Ranch will be on R. side of the road. Follow signs.

Horseback riding – bring your own horse or rent one – on working cattle ranch w/2,000 acres, beautiful scenery & abundant wildlife. Visit excavations at largest buffalo kill site in the southern plains. Lodging available in cabins; overnight camping is available. Restaurant is on-site. Call for details.
www.flyingwguestranch.com

10874 N. 1920 Road
Sayre, OK 73662
580-302-3319



14. Country Inn Bed & Breakfast

From Tulsa: I-44 E., take the Catoosa/Clairemore exit. After Stuart Roosa St., continue on Hwy. 66 for 5.5 mi. Turn R. at Kong's Korner corner (EW-43). Drive 5 mi. & follow signs.

Country retreat features 2-story farm-style structure w/ silo; gourmet breakfast served. Honeymoon loft offers California King bed, double Jacuzzi, separate bathroom, satellite TV/DVD, microwave/fridge/coffeemaker, covered deck overlooking 5 acres, in-ground swimming pool & hot tub.
www.countryinnbandb.net

20530 E. 430th Road
Clairemore, OK 74017
918-342-1894



18. Mesa Valley Guesthouse

Call for directions.

Country getaway in the heart of the dry Cimarron River Valley, located near Black Mesa, Oklahoma's highest point! Mesa Valley Guesthouse offers overnight stays and is a self-catering rental. Secluded & quiet, but best of all – the view!

Kenton, OK 73946
580-516-1971
580-261-7439



15. Dos Equis (XX) Ranch

From Fittstown: Go S. on Hwy. 99/377 0.5 mi. Turn L. at 99A and go 1.9 mi. Turn R. on N3600 Road & travel 1.25 mi., then turn L. at E. 1672, traveling 0.4 mi. to the property.

Features cabins & 2 designated but unsupervised swimming areas. Explore 970 acres of rolling hills, miles of trails, 2 crystal-clear spring creeks & 18 stocked ponds & lakes. Wildlife abounds – squirrels, rabbits, deer, wild turkey, bobcat, beaver, coyote, ducks & geese.
www.xxranch.com

27265 CR 3620
Stonewall, OK 74871
580-265-4476



19. Miller Lake Retreat LLC

Cottage getaway part of 130-acre working ranch, nestled in the backwoods of the Kiamichi Mountains next to a natural oxbow lake & fronting a mile of the Kiamichi River. Fishing, canoeing, hiking or just plain relaxing. Guest house cottage is wheelchair-friendly. Call for reservations.
www.millerlakeretreat.com

Moyers, OK 74557
580-298-5483



16. Echo Canyon Spa Resort

From OKC: Take Exit 55 E. (Arbuckle Lake) 3 mi. to the town of Davis. Continue 7 mi. E. on Hwy. 7 through Sulphur. Take a R. (S.) on Hwy. 177. Go approx. 1 mi. until Hwy. 18A (turn left at the Oklahoma Veterans Center sign, the second Hwy. 18A sign). Go L. to the top of the hill, where the road bends to the L., & continue straight onto Lawton Ave. Echo Canyon Spa Resort is the second driveway on the R. Call for gate code.

B&B spa resort located on 27 acres in the Arbuckle Mountains, near Lake Arbuckle & the Chickasaw National Recreation Area. Jacuzzi hot tubs in most suites, mineral water Jacuzzi on main deck. Gourmet dining & full spa available. Fruit trees on site. Call for reservations or book online.
www.echocanyonmanor.com

350 Lawton Ave.
Sulphur, OK 73086
580-421-5076



20. Moore Farms

From Pryor: Go 5 mi. W. of Pryor on Hwy. 20. Turn L./S. on S. 426 (paved road) and go 1 mi. Turn R./W. on W. 500 Road for 0.5 mi. to the dead end. Turn L. into the Moore Farms rustic wedding facilities. From Claremore: Go 10 mi. E. of the turnpike (I-44). Just past the NE vo-tech campus, turn R./S. onto S. 426 Road for 1 mi. Turn R./W. on W. 500 Road for 0.5 mi. to the dead end. Turn L. into the Moore Farms rustic wedding facilities.

Moore Farms totals 940 acres for crops, hay, cattle and the feed store. Beautiful event facilities include a rustic barn, open-air pavilion & the brand new Hitchin' Barn (climate-controlled with seating for 350). They also provide a guest cabin and bunkhouse for country getaways. The farm is open year-round. Call for booking or to set up a tour.
www.moorefarms.net

7965 W. 510
Pryor, OK 74361
918-825-0232





21. Moore's Flying M Ranch

Go E. of Tulsa on Hwy. 412, 16 mi. to 4240 Rd., then go N. (L.) 5 mi. to our entryway, marked by the ranch sign.

Ranch on 700 acres offers 2-story log cabin & use of the ranch & picnic grounds for your next event. Our ranch is the perfect setting for church & youth retreats, reunions, weddings, birthday parties or hayrides. Don't miss the Acropalypse Haunted Hayrides and The Widow Maker Mine Walk-Through on the weekends in October. Call for availability.

www.mooresflyingm.com

20707 E. 540 Road
Inola, OK 74036
918-638-8740
918-341-7146



25. Pecan Valley Inn Bed and Breakfast

Take exit 55 off I-35; travel W. 1.2 mi. on Hwy. 7 to the driveway on the N. side of the road that has a gated entrance & a reflective lightning bolt on the mailbox.

Country getaway in historic 1898 Victorian home sits on 2,500-acre cattle ranch, where guests can stroll the grounds picking blackberries, fishing, hiking or enjoying the wrap-around porch. Select from 3 romantic guest rooms or suites, many w/original fireplaces & claw-foot bathtubs w/showers.

www.pecanvalleyinn.com

Davis, OK 73030
580-369-3366
866-369-3366



22. Mountain Creek Lodge of Oklahoma

From Kellyville: Follow Hwy. 66 SW and turn L. onto Slick Road (S. 209th W. Ave.). Drive just under 4 mi. S. Mountain Creek Lodge will be on your R.

Located 25 minutes SW of Tulsa, Mountain Creek Lodge is a family-run event center offering a variety of activities, facilities & housing just 4 mi. off historic Route 66 in Kellyville, OK.

The main lodge is a beautifully restored 1940s-era rock barn, perfect for weddings, reunions, company parties or any reason to celebrate. The north lodge is a fully furnished 5-bed, 3-full-bath home with plenty of space to relax, watch wildlife or fish. It is available as a stand-alone rental, or for guests attending events at the lodge. Lodge packages can be tailored to fit your specific needs. Please call or email for pricing and availability.

www.mountaincreeklodgeok.com

21301 W. 191st St. S.
Kellyville, OK 74039
918-247-6600



26. Plymouth Valley Cellars Vineyards

From Fairview: Go S. 6 mi. on Hwy. 58 to the junction of 58 & 51A; go 1 mi. E.

Vineyards & winery surrounded by the beauty of the rolling Gloss Mountains & colorful gypsum formations. The vineyards offer a variety of items, including premium Oklahoma grapes & wine, grape juices, made in Oklahoma products & more. Open daily from noon to dark.

www.plymouthvalleycellars.com

57442 S. CR 255
Fairview, OK 73737
580-227-3207



23. Mowdy Ranch Mustangs

Mowdy Ranch comprises 4,000 acres of wooded hills and open valleys in SE Oklahoma, the historical home of the legendary Choctaw ponies.

www.mowdyranch.com

16242 Oklahoma 31
Coalgate, OK 74538
580-927-5093



27. Prairie Land Ranch

Go 2 mi. S. of I-40 (El Reno exit 123) & follow blacktop road to sign & gate.

Visit horses, donkeys, llamas, peacocks, geese, ducks, turkeys & guineas on a quiet ranch. Features a fully furnished Victorian-style home for couples or family reunions, along w/an enclosed flower garden, a small lake with walking trails, & horses available for weddings.

www.prairielandranch.com

5620 S. Country Club Road
El Reno, OK 73036
405-650-6651



24. Painted Gait Farm

From I-44, take exit for Hwy. 18/Chandler. Take Hwy. 18 N. to 840 Road. Turn E. on 840 Road & continue for 2 5/8 mi.

This is a quiet country getaway on an 80-acre working cow/calf operation. The peaceful setting is perfect for relaxing & enjoying nature. There are walking trails through the woods, 2 wet-weather creeks, a pond for fishing & wildlife to see. With no city lights around, you can see many stars in the sky. Please book through airbnb.com.

www.okgrassfed.com

720 S. Henney Road
Arcadia, OK 73007
478-714-7121



28. Redberry Farm – Cedar Rock Inn & The Silo Center

From Tulsa: Take I-44 W. across the river to the 51st St. exit (future Gilcrease Expressway). Go through the light at 51st St. & continue 1 mi. to W. 41st St. Turn R./E. on 41st St. The inn is 0.5 mi. on the L./N. From OKC: Take I-44 E. to I-244 E. Take the very 1st exit off of I-244, which is the 51st St. exit (future Gilcrease Expressway). Go through the light at 51st St. & continue 1 mi. to W. 41st St. Turn R./E. on 41st St. The inn is 0.5 mi. on the L./N.

Cedar Rock Inn is a beautiful B&B in Tulsa w/other homes converted to vacation rentals. The Silo Center hosts weddings, parties, corporate events, retreats & many other types of events.

www.cedarrockinn.com

4501 W. 41st. St.
Tulsa, OK 74107
918-447-4493







37. The Canyon Inn at Medicine Rock Ranch

From OKC: W. on I-40 turn S. on exit 101. Go S. on Hwy. 281 through Hinton & Lookeba. Continue 1 mi. S. past Lookeba to CR 1150. Turn E. & go 2.7 mi. The entrance is on the S. side of the road.

One of Oklahoma's premier country-stay locations. Host to many varieties of wildlife & waterfowl, this bed & breakfast is a shutterbug's dream! Built in 2006 to mimic an old ranch headquarters, the home has every amenity. Beautiful landscaping & lawn features allow you to unwind & reconnect with nature without feeling like a tourist or guest. With multiple ponds on the property, there is plenty of space for nature hiking, fishing, birding & picnics. Guided hunts are available.

www.thecanyoninn.com

18129 CR 1150
Lookeba, OK 73053
405-457-6364
405-202-0038



40. Vista Del Sol Bunkhouse & Livery

Call for directions.

Vacation rental on 40-acre ranch, 2-story 2-bedroom/2-bath furnished bunkhouse w/amenities. Area includes gas grill, picnic table & fire pit. Visit resident llamas, goats & horses & watch area wildlife, including guinea fowls, deer, turkey, birds, bobcats & coyotes. Call for availability.

www.premierlakeproperty.com

31104 N. CR 3170
Hennepin, OK 73444
580-622-6125,
580-369-1578



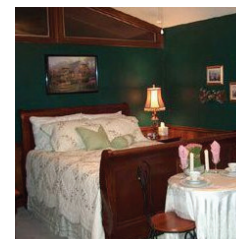
38. The Willows Inn Bed & Breakfast

Take Hwy. 412 E. to mile marker 32, then go N. 0.25 mi.

Ranch-style home in the country serves as our B&B – an elegant yet casual place to unwind w/privacy & comfort for a quiet, restful stay. Call for reservations.

www.thewillowsinn.net

Rural Route 3, Box 133
Guymon, OK 73942
580-338-1303



41. Wakefield Country Inn and Winery

9 mi. S. of Calvin on Hwy. 75, then 3 mi. E.; 30 mi. E. of Ada., 30 mi. W. of McAlester.

Inn, vineyards & winery, swimming pool, hydrotherapy spa, relaxing massage available, wine tastings. Five-course dinners available. Inn features 3 individually decorated guest rooms, 2-acre fishing pond, skeet shooting, exercise/fitness room. Call for reservations.

www.wakefieldcountryinn.com

8297 Diagonal 1500 Road
Gerty, OK 74570
580-513-0707
580-513-0876



39. Tres Lagunas Ranch

Take Hwy. 62 6 mi. E. of Meeker or 6 mi. W. of Prague. Turn S. on County Road 3490. The farm is 0.75 mi. down the road on the right. Look for the white gate.

Comfortable, fully furnished cabin on a 160-acre working ranch. Cabin sleeps 4. Bring your horses & ride, or schedule a tour to see livestock & wildlife, including the exotic deer park. Activities include fishing, campfires, cookouts U-pick fruit & pecans in season, hayrides, & trails for riding, biking or hiking.

104789 S. 3490 CR
Prague, OK 74864
405-567-0159
405-416-0045



